

Product datasheet for **TA504588M**

TAF2 Mouse Monoclonal Antibody [Clone ID: OTI2A5]

Product data:

Product Type:	Primary Antibodies
Clone Name:	OTI2A5
Applications:	WB
Recommended Dilution:	WB 1:2000
Reactivity:	Human, Mouse, Rat
Host:	Mouse
Isotype:	IgG1
Clonality:	Monoclonal
Immunogen:	Human recombinant protein fragment corresponding to amino acids 782-1121 of human TAF2(NP_003175) produced in E.coli.
Formulation:	PBS (pH 7.3) containing 1% BSA, 50% glycerol and 0.02% sodium azide.
Concentration:	1 mg/ml
Purification:	Purified from mouse ascites fluids or tissue culture supernatant by affinity chromatography (protein A/G)
Conjugation:	Unconjugated
Storage:	Store at -20°C as received.
Stability:	Stable for 12 months from date of receipt.
Predicted Protein Size:	136.8 kDa
Gene Name:	TATA-box binding protein associated factor 2
Database Link:	NP_003175 Entrez Gene 170844 Rat Entrez Gene 319944 Mouse Entrez Gene 6873 Human Q6P1X5



[View online »](#)

Background:

Initiation of transcription by RNA polymerase II requires the activities of more than 70 polypeptides. The protein that coordinates these activities is transcription factor IID (TFIID), which binds to the core promoter to position the polymerase properly, serves as the scaffold for assembly of the remainder of the transcription complex, and acts as a channel for regulatory signals. TFIID is composed of the TATA-binding protein (TBP) and a group of evolutionarily conserved proteins known as TBP-associated factors or TAFs. TAFs may participate in basal transcription, serve as coactivators, function in promoter recognition or modify general transcription factors (GTFs) to facilitate complex assembly and transcription initiation. This gene encodes one of the larger subunits of TFIID that is stably associated with the TFIID complex. It contributes to interactions at and downstream of the transcription initiation site, interactions that help determine transcription complex response to activators. [provided by RefSeq]

Synonyms:

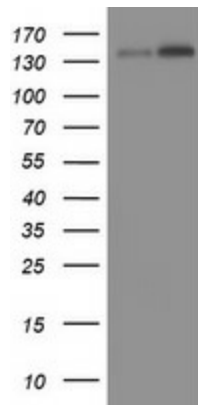
CIF150; MRT40; TAF2B; TAFII150

Protein Families:

Protease, Transcription Factors

Protein Pathways:

Basal transcription factors

Product images:


HEK293T cells were transfected with the pCMV6-ENTRY control (Cat# [PS100001], Left lane) or pCMV6-ENTRY TAF2 (Cat# [RC213159], Right lane) cDNA for 48 hrs and lysed. Equivalent amounts of cell lysates (5 ug per lane) were separated by SDS-PAGE and immunoblotted with anti-TAF2(Cat# [TA504588]). Positive lysates [LY418826] (100ug) and [LC418826] (20ug) can be purchased separately from OriGene.