

Product datasheet for **TA504587M**

LIM1 (LHX1) Mouse Monoclonal Antibody [Clone ID: OTI3A9]

Product data:

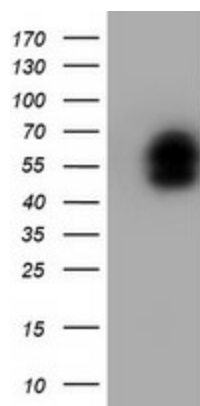
| | |
|-------------------------|--|
| Product Type: | Primary Antibodies |
| Clone Name: | OTI3A9 |
| Applications: | FC, IF, IHC, WB |
| Recommended Dilution: | WB 1:2000, IHC 1:150, IF 1:100, FLOW 1:100 |
| Reactivity: | Human, Mouse, Rat |
| Host: | Mouse |
| Isotype: | IgG1 |
| Clonality: | Monoclonal |
| Immunogen: | Human recombinant protein fragment corresponding to amino acids 100-362 of human LHX1(NP_005559) produced in E.coli. |
| Formulation: | PBS (pH 7.3) containing 1% BSA, 50% glycerol and 0.02% sodium azide. |
| Concentration: | 0.53 mg/ml |
| Purification: | Purified from mouse ascites fluids or tissue culture supernatant by affinity chromatography (protein A/G) |
| Conjugation: | Unconjugated |
| Storage: | Store at -20°C as received. |
| Stability: | Stable for 12 months from date of receipt. |
| Predicted Protein Size: | 44.6 kDa |
| Gene Name: | LIM homeobox 1 |
| Database Link: | NP_005559 Entrez Gene 16869 Mouse Entrez Gene 257634 Rat Entrez Gene 3975 Human P48742 |
| Background: | This gene encodes a member of a large protein family which contains the LIM domain, a unique cysteine-rich zinc-binding domain. The encoded protein is a transcription factor important for the development of the renal and urogenital systems. This gene is a candidate for Mayer-Rokitansky-Kuster-Hauser syndrome, a disorder characterized by anomalies in the female genital tract. [provided by RefSeq] |


[View online »](#)

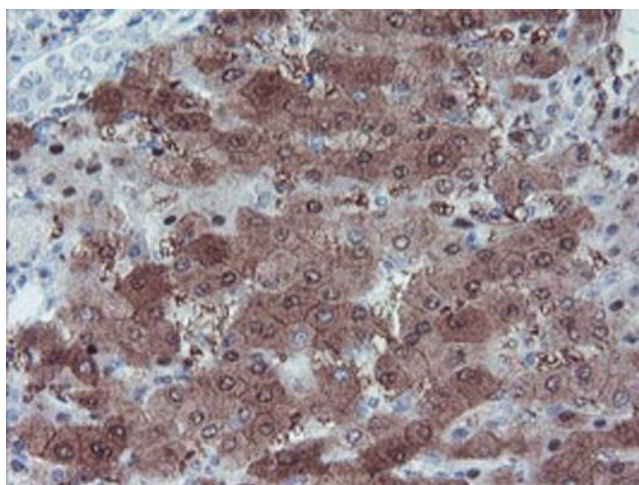
Synonyms: LIM-1; LIM1

Protein Families: ES Cell Differentiation/IPS, Transcription Factors

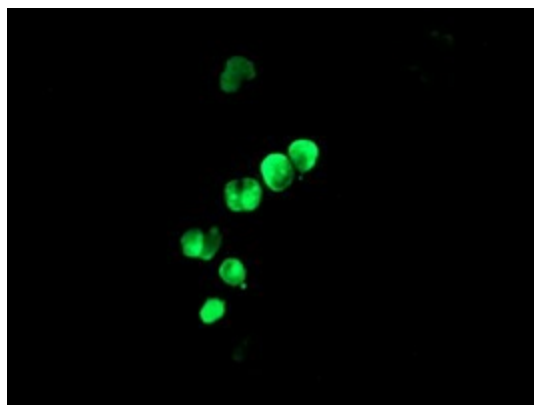
Product images:



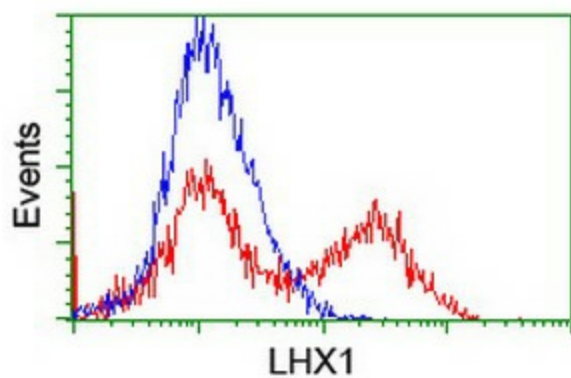
HEK293T cells were transfected with the pCMV6-ENTRY control (Left lane) or pCMV6-ENTRY LHX1 ([RC210977], Right lane) cDNA for 48 hrs and lysed. Equivalent amounts of cell lysates (5 ug per lane) were separated by SDS-PAGE and immunoblotted with anti-LHX1. Positive lysates [LY417207] (100ug) and [LC417207] (20ug) can be purchased separately from OriGene.



Immunohistochemical staining of paraffin-embedded Human liver tissue within the normal limits using anti-LHX1 mouse monoclonal antibody. Heat-induced epitope retrieval by EDTA solution buffer pH 8.0 at 120°C for 3 min.



Anti-LHX1 mouse monoclonal antibody ([TA504587]) immunofluorescent staining of COS7 cells transiently transfected by pCMV6-ENTRY LHX1 ([RC210977]).



HEK293T cells transfected with either [RC210977] overexpress plasmid (Red) or empty vector control plasmid (Blue) were immunostained by anti-LHX1 antibody ([TA504587]), and then analyzed by flow cytometry.