

## Product datasheet for **TA504580AM**

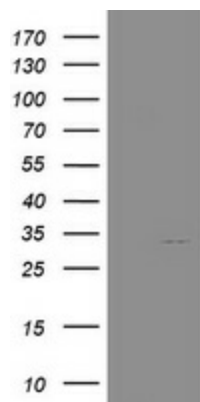
### **NANP Mouse Monoclonal Antibody (Biotin conjugated) [Clone ID: OTI3C1]**

#### **Product data:**

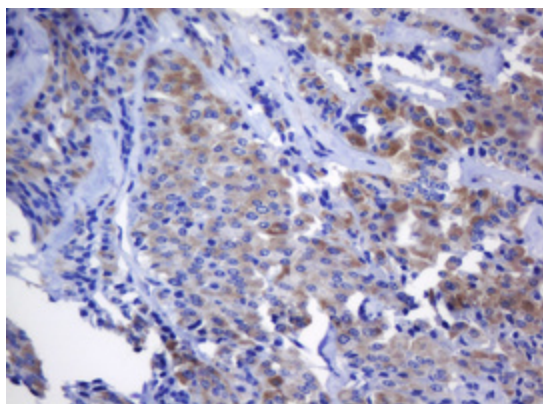
<b>Product Type:</b>	Primary Antibodies
<b>Clone Name:</b>	OTI3C1
<b>Applications:</b>	IHC, WB
<b>Recommended Dilution:</b>	WB 1:2000, IHC 1:150
<b>Reactivity:</b>	Human, Mouse, Rat
<b>Host:</b>	Mouse
<b>Isotype:</b>	IgG2a
<b>Clonality:</b>	Monoclonal
<b>Immunogen:</b>	Full length human recombinant protein of human NANP(NP_689880) produced in HEK293T cell.
<b>Formulation:</b>	PBS (pH 7.3) containing 1% BSA, 50% glycerol and 0.02% sodium azide.
<b>Concentration:</b>	0.5 mg/ml
<b>Purification:</b>	Purified from mouse ascites fluids or tissue culture supernatant by affinity chromatography (protein A/G)
<b>Conjugation:</b>	Biotin
<b>Storage:</b>	Store at -20°C as received.
<b>Stability:</b>	Stable for 12 months from date of receipt.
<b>Predicted Protein Size:</b>	27.6 kDa
<b>Gene Name:</b>	N-acetylneuraminic acid phosphatase
<b>Database Link:</b>	<a href="#">NP_689880</a> <a href="#">Entrez Gene 67311 Mouse</a> <a href="#">Entrez Gene 311530 Rat</a> <a href="#">Entrez Gene 140838 Human</a> <a href="#">Q8TBE9</a>
<b>Synonyms:</b>	C20orf147; dj694B14.3; HDHD4
<b>Protein Pathways:</b>	Amino sugar and nucleotide sugar metabolism, Metabolic pathways



[View online »](#)

**Product images:**

HEK293T cells were transfected with the pCMV6-ENTRY control (Left lane) or pCMV6-ENTRY NANP ([RC205503], Right lane) cDNA for 48 hrs and lysed. Equivalent amounts of cell lysates (5 ug per lane) were separated by SDS-PAGE and immunoblotted with anti-NANP. Positive lysates [LY407388] (100ug) and [LC407388] (20ug) can be purchased separately from OriGene.



Immunohistochemical staining of paraffin-embedded Carcinoma of Human thyroid tissue using anti-NANP mouse monoclonal antibody. (Heat-induced epitope retrieval by 10mM citric buffer, pH6.0, 120°C for 3min, [TA504580])