

## Product datasheet for **TA504576BM**

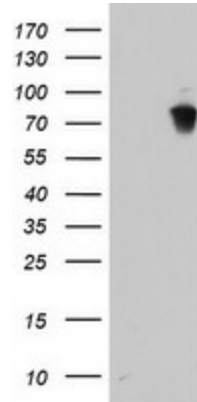
### **LRRC50 (DNAAF1) Mouse Monoclonal Antibody (HRP conjugated) [Clone ID: OTI5F8]**

#### **Product data:**

|                         |   |
|-------------------------|---|
| Product Type:           | Primary Antibodies  |
| Clone Name:             | OTI5F8  |
| Applications:           | WB  |
| Recommended Dilution:   | WB 1:2000   |
| Reactivity:             | Human   |
| Host:                   | Mouse   |
| Isotype:                | IgG1  |
| Clonality:              | Monoclonal  |
| Immunogen:              | Full length human recombinant protein of human LRRC50(NP_848547) produced in HEK293T cell.  |
| Formulation:            | PBS (pH 7.3) containing 1% BSA, 50% glycerol.   |
| Concentration:          | 0.5 mg/ml   |
| Purification:           | Purified from mouse ascites fluids or tissue culture supernatant by affinity chromatography (protein A/G)   |
| Conjugation:            | HRP   |
| Storage:                | Store at -20°C as received.   |
| Stability:              | Stable for 12 months from date of receipt.  |
| Predicted Protein Size: | 79.8 kDa  |
| Gene Name:              | dynein axonemal assembly factor 1   |
| Database Link:          | <a href="#">NP_848547</a><br><a href="#">Entrez Gene 123872 Human</a><br><a href="#">Q8NEP3</a>   |
| Background:             | The protein encoded by this gene is cilium-specific and is required for the stability of the ciliary architecture. It is involved in the regulation of microtubule-based cilia and actin-based brush border microvilli. Mutations in this gene are associated with primary ciliary dyskinesia-13. COMPLETENESS: complete on the 3' end. |
| Synonyms:               | CILD13; LRRC50; ODA7; swt   |



[View online »](#)

**Product images:**

HEK293T cells were transfected with the pCMV6-ENTRY control (Left lane) or pCMV6-ENTRY LRRC50 ([RC205452], Right lane) cDNA for 48 hrs and lysed. Equivalent amounts of cell lysates (5 ug per lane) were separated by SDS-PAGE and immunoblotted with anti-LRRC50. Positive lysates [LY405926] (100ug) and [LC405926] (20ug) can be purchased separately from OriGene.