

## Product datasheet for **TA504575AM**

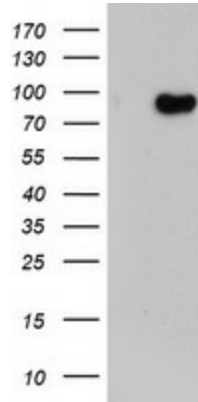
### **LRRC50 (DNAAF1) Mouse Monoclonal Antibody (Biotin conjugated) [Clone ID: OTI3A1]**

#### **Product data:**

Product Type:	Primary Antibodies
Clone Name:	OTI3A1
Applications:	WB
Recommended Dilution:	WB 1:2000
Reactivity:	Human
Host:	Mouse
Isotype:	IgG2b
Clonality:	Monoclonal
Immunogen:	Full length human recombinant protein of human LRRC50(NP_848547) produced in HEK293T cell.
Formulation:	PBS (pH 7.3) containing 1% BSA, 50% glycerol and 0.02% sodium azide.
Concentration:	0.5 mg/ml
Purification:	Purified from mouse ascites fluids or tissue culture supernatant by affinity chromatography (protein A/G)
Conjugation:	Biotin
Storage:	Store at -20°C as received.
Stability:	Stable for 12 months from date of receipt.
Predicted Protein Size:	79.8 kDa
Gene Name:	dynein axonemal assembly factor 1
Database Link:	<a href="#">NP_848547</a> <a href="#">Entrez Gene 123872 Human</a> <a href="#">Q8NEP3</a>
Background:	The protein encoded by this gene is cilium-specific and is required for the stability of the ciliary architecture. It is involved in the regulation of microtubule-based cilia and actin-based brush border microvilli. Mutations in this gene are associated with primary ciliary dyskinesia-13. COMPLETENESS: complete on the 3' end.
Synonyms:	CILD13; LRRC50; ODA7; swt



[View online »](#)

**Product images:**

HEK293T cells were transfected with the pCMV6-ENTRY control (Left lane) or pCMV6-ENTRY LRRC50 ([RC205452], Right lane) cDNA for 48 hrs and lysed. Equivalent amounts of cell lysates (5 ug per lane) were separated by SDS-PAGE and immunoblotted with anti-LRRC50. Positive lysates [LY405926] (100ug) and [LC405926] (20ug) can be purchased separately from OriGene.