

## Product datasheet for **TA504575**

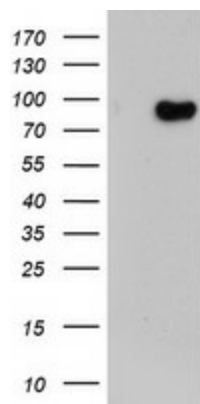
### **LRRC50 (DNAAF1) Mouse Monoclonal Antibody [Clone ID: OTI3A1]**

#### **Product data:**

|                                |   |
|--------------------------------|---|
| <b>Product Type:</b>           | Primary Antibodies  |
| <b>Clone Name:</b>             | OTI3A1  |
| <b>Applications:</b>           | WB  |
| <b>Recommended Dilution:</b>   | WB 1:2000   |
| <b>Reactivity:</b>             | Human   |
| <b>Host:</b>                   | Mouse   |
| <b>Isotype:</b>                | IgG2b   |
| <b>Clonality:</b>              | Monoclonal  |
| <b>Immunogen:</b>              | Full length human recombinant protein of human LRRC50(NP_848547) produced in HEK293T cell.  |
| <b>Formulation:</b>            | PBS (pH 7.3) containing 1% BSA, 50% glycerol and 0.02% sodium azide.  |
| <b>Concentration:</b>          | 0.7 mg/ml   |
| <b>Purification:</b>           | Purified from mouse ascites fluids or tissue culture supernatant by affinity chromatography (protein A/G)   |
| <b>Conjugation:</b>            | Unconjugated  |
| <b>Storage:</b>                | Store at -20°C as received.   |
| <b>Stability:</b>              | Stable for 12 months from date of receipt.  |
| <b>Predicted Protein Size:</b> | 79.8 kDa  |
| <b>Gene Name:</b>              | dynein axonemal assembly factor 1   |
| <b>Database Link:</b>          | <a href="#">NP_848547</a><br><a href="#">Entrez Gene 123872 Human</a><br><a href="#">Q8NEP3</a>   |
| <b>Background:</b>             | The protein encoded by this gene is cilium-specific and is required for the stability of the ciliary architecture. It is involved in the regulation of microtubule-based cilia and actin-based brush border microvilli. Mutations in this gene are associated with primary ciliary dyskinesia-13. COMPLETENESS: complete on the 3' end. |
| <b>Synonyms:</b>               | CILD13; LRRC50; ODA7; swt   |



[View online »](#)

**Product images:**

HEK293T cells were transfected with the pCMV6-ENTRY control (Left lane) or pCMV6-ENTRY LRRC50 ([RC205452], Right lane) cDNA for 48 hrs and lysed. Equivalent amounts of cell lysates (5 ug per lane) were separated by SDS-PAGE and immunoblotted with anti-LRRC50. Positive lysates [LY405926] (100ug) and [LC405926] (20ug) can be purchased separately from OriGene.