

## Product datasheet for **TA504570S**

### ATIC Mouse Monoclonal Antibody [Clone ID: OTI4A10]

#### Product data:

Product Type:	Primary Antibodies
Clone Name:	OTI4A10
Applications:	WB
Recommended Dilution:	WB 1:500~1000
Reactivity:	Human, Dog, Mouse, Rat
Host:	Mouse
Isotype:	IgG1
Clonality:	Monoclonal
Immunogen:	Full length human recombinant protein of human ATIC(NP_004035) produced in HEK293T cell.
Formulation:	PBS (pH 7.3) containing 1% BSA, 50% glycerol and 0.02% sodium azide.
Concentration:	3.51 mg/ml
Purification:	Purified from mouse ascites fluids or tissue culture supernatant by affinity chromatography (protein A/G)
Conjugation:	Unconjugated
Storage:	Store at -20°C as received.
Stability:	Stable for 12 months from date of receipt.
Predicted Protein Size:	64.4 kDa
Gene Name:	5-aminoimidazole-4-carboxamide ribonucleotide formyltransferase/IMP cyclohydrolase
Database Link:	<a href="#">NP_004035</a> <a href="#">Entrez Gene 81643 Rat</a> <a href="#">Entrez Gene 108147 Mouse</a> <a href="#">Entrez Gene 488513 Dog</a> <a href="#">Entrez Gene 471 Human</a> <a href="#">P31939</a>
Background:	This gene encodes a bifunctional protein that catalyzes the last two steps of the de novo purine biosynthetic pathway. The N-terminal domain has phosphoribosylaminoimidazolecarboxamide formyltransferase activity, and the C-terminal domain has IMP cyclohydrolase activity. A mutation in this gene results in AICA-ribosiduria. [provided by RefSeq]



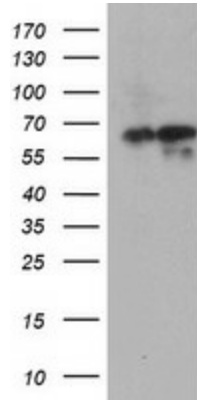
[View online »](#)

**Synonyms:** AICAR; AICARFT; HEL-S-70p; IMPCHASE; PURH

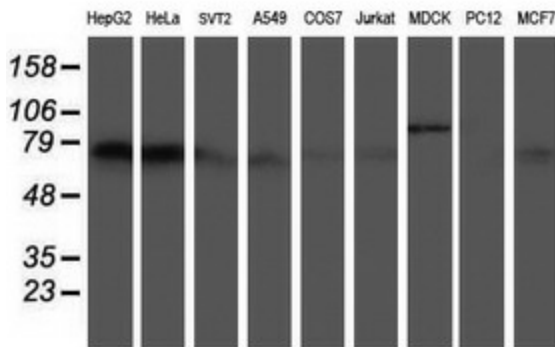
**Protein Families:** Stem cell - Pluripotency

**Protein Pathways:** Metabolic pathways, One carbon pool by folate, Purine metabolism

**Product images:**



HEK293T cells were transfected with the pCMV6-ENTRY control (Left lane) or pCMV6-ENTRY ATIC ([RC203490], Right lane) cDNA for 48 hrs and lysed. Equivalent amounts of cell lysates (5 ug per lane) were separated by SDS-PAGE and immunoblotted with anti-ATIC. Positive lysates [LY418255] (100ug) and [LC418255] (20ug) can be purchased separately from OriGene.



Western blot analysis of extracts (35ug) from 9 different cell lines by using anti-ATIC monoclonal antibody (HepG2: human; HeLa: human; SVT2: mouse; A549: human; COS7: monkey; Jurkat: human; MDCK: canine; PC12: rat; MCF7: human).