

Product datasheet for **TA504563S**

Transferrin Receptor 2 (TFR2) Mouse Monoclonal Antibody [Clone ID: OTI2B4]

Product data:

Product Type:	Primary Antibodies
Clone Name:	OTI2B4
Applications:	FC, IF, WB
Recommended Dilution:	WB 1:500~2000, IF 1:100, FLOW 1:100
Reactivity:	Human, Rat, Monkey, Mouse
Host:	Mouse
Isotype:	IgG2a
Clonality:	Monoclonal
Immunogen:	Full length human recombinant protein of human TFR2(NP_003218) produced in HEK293T cell.
Formulation:	PBS (pH 7.3) containing 1% BSA, 50% glycerol and 0.02% sodium azide.
Concentration:	1 mg/ml
Purification:	Purified from mouse ascites fluids or tissue culture supernatant by affinity chromatography (protein A/G)
Conjugation:	Unconjugated
Storage:	Store at -20°C as received.
Stability:	Stable for 12 months from date of receipt.
Predicted Protein Size:	88.6 kDa
Gene Name:	transferrin receptor 2
Database Link:	NP_003218 Entrez Gene 50765 Mouse Entrez Gene 288562 Rat Entrez Gene 719240 Monkey Entrez Gene 7036 Human Q9UP52



[View online »](#)

Background:

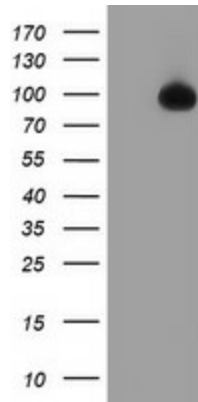
This gene encodes a single-pass type II membrane protein, which is a member of the transferrin receptor-like family. This protein mediates cellular uptake of transferrin-bound iron, and may be involved in iron metabolism, hepatocyte function and erythrocyte differentiation. Mutations in this gene have been associated with hereditary hemochromatosis type III. Alternatively spliced transcript variants encoding different isoforms have been described for this gene. [provided by RefSeq]

Synonyms:

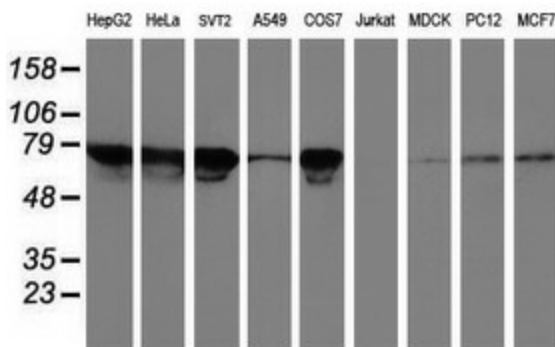
HFE3; TFRC2

Protein Families:

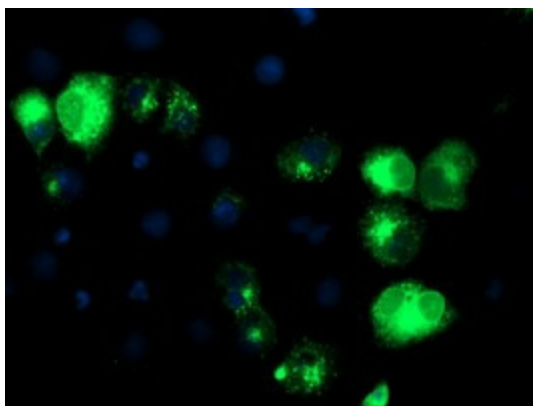
Druggable Genome, Protease, Transmembrane

Product images:


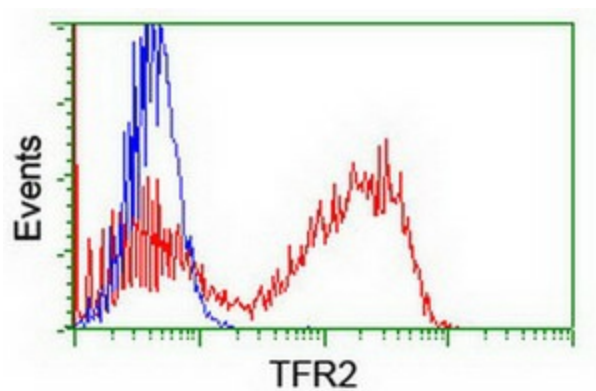
HEK293T cells were transfected with the pCMV6-ENTRY control (Left lane) or pCMV6-ENTRY TFR2 ([RC220060], Right lane) cDNA for 48 hrs and lysed. Equivalent amounts of cell lysates (5 ug per lane) were separated by SDS-PAGE and immunoblotted with anti-TFR2. Positive lysates [LY401114] (100ug) and [LC401114] (20ug) can be purchased separately from OriGene.



Western blot analysis of extracts (35ug) from 9 different cell lines by using anti-TFR2 monoclonal antibody.



Anti-TFR2 mouse monoclonal antibody ([TA504563]) immunofluorescent staining of COS7 cells transiently transfected by pCMV6-ENTRY TFR2 ([RC220060]).



HEK293T cells transfected with either [RC220060] overexpress plasmid (Red) or empty vector control plasmid (Blue) were immunostained by anti-TFR2 antibody ([TA504563]), and then analyzed by flow cytometry.