

Product datasheet for **TA504561M**

RMC1 Mouse Monoclonal Antibody [Clone ID: OTI4E4]

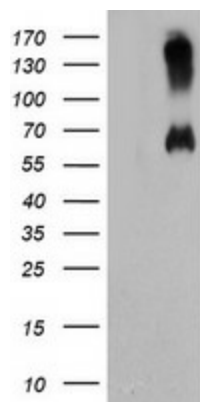
Product data:

Product Type:	Primary Antibodies
Clone Name:	OTI4E4
Applications:	FC, WB
Recommended Dilution:	WB 1:2000, FLOW 1:100
Reactivity:	Human
Host:	Mouse
Isotype:	IgG2a
Clonality:	Monoclonal
Immunogen:	Full length human recombinant protein of human C18orf8(NP_037458) produced in HEK293T cell.
Formulation:	PBS (pH 7.3) containing 1% BSA, 50% glycerol and 0.02% sodium azide.
Concentration:	0.87 mg/ml
Purification:	Purified from mouse ascites fluids or tissue culture supernatant by affinity chromatography (protein A/G)
Conjugation:	Unconjugated
Storage:	Store at -20°C as received.
Stability:	Stable for 12 months from date of receipt.
Predicted Protein Size:	74.8 kDa
Gene Name:	regulator of MON1-CCZ1
Database Link:	NP_037458 Entrez Gene 29919 Human Q96DM3
Synonyms:	C18orf8; HsT2591; Mic-1; MIC1; WDR98

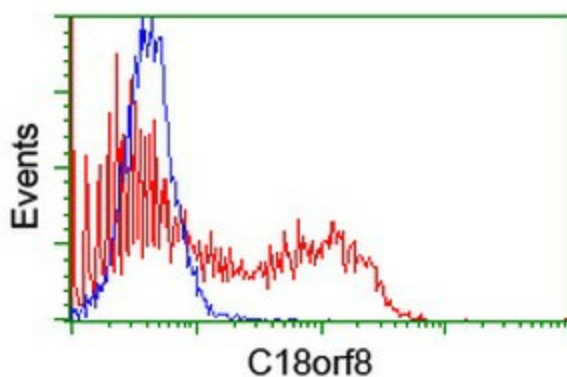


[View online »](#)

Product images:



HEK293T cells were transfected with the pCMV6-ENTRY control (Cat# [PS100001], Left lane) or pCMV6-ENTRY C18orf8 (Cat# [RC203449], Right lane) cDNA for 48 hrs and lysed. Equivalent amounts of cell lysates (5 ug per lane) were separated by SDS-PAGE and immunoblotted with anti-C18orf8 (Cat# [TA504561]). Positive lysates [LY415628] (100ug) and [LC415628] (20ug) can be purchased separately from OriGene.



HEK293T cells transfected with either [RC203449] overexpress plasmid (Red) or empty vector control plasmid (Blue) were immunostained by anti-C18orf8 antibody ([TA504561]), and then analyzed by flow cytometry.