

## Product datasheet for **TA504561**

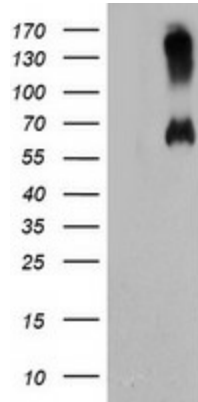
### RMC1 Mouse Monoclonal Antibody [Clone ID: OTI4E4]

#### Product data:

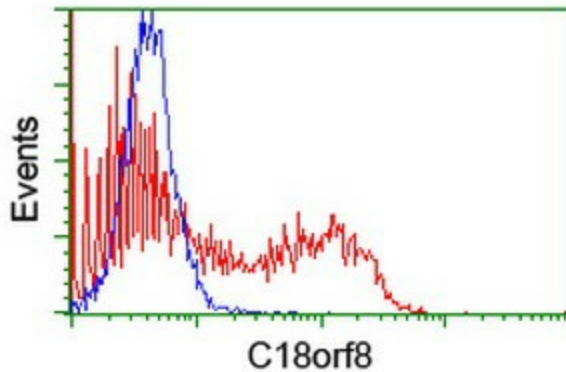
|                         |   |
|-------------------------|---|
| Product Type:           | Primary Antibodies  |
| Clone Name:             | OTI4E4  |
| Applications:           | FC, WB  |
| Recommended Dilution:   | WB 1:2000, FLOW 1:100   |
| Reactivity:             | Human   |
| Host:                   | Mouse   |
| Isotype:                | IgG2a   |
| Clonality:              | Monoclonal  |
| Immunogen:              | Full length human recombinant protein of human C18orf8(NP_037458) produced in HEK293T cell.               |
| Formulation:            | PBS (pH 7.3) containing 1% BSA, 50% glycerol and 0.02% sodium azide.                                      |
| Concentration:          | 0.87 mg/ml  |
| Purification:           | Purified from mouse ascites fluids or tissue culture supernatant by affinity chromatography (protein A/G) |
| Conjugation:            | Unconjugated  |
| Storage:                | Store at -20°C as received.   |
| Stability:              | Stable for 12 months from date of receipt.  |
| Predicted Protein Size: | 74.8 kDa  |
| Gene Name:              | regulator of MON1-CCZ1  |
| Database Link:          | <a href="#">NP_037458</a><br><a href="#">Entrez Gene 29919 Human</a><br><a href="#">Q96DM3</a>            |
| Synonyms:               | C18orf8; HsT2591; Mic-1; MIC1; WDR98  |



[View online »](#)

**Product images:**

HEK293T cells were transfected with the pCMV6-ENTRY control (Cat# [PS100001], Left lane) or pCMV6-ENTRY C18orf8 (Cat# [RC203449], Right lane) cDNA for 48 hrs and lysed. Equivalent amounts of cell lysates (5 ug per lane) were separated by SDS-PAGE and immunoblotted with anti-C18orf8 (Cat# TA504561). Positive lysates [LY415628] (100ug) and [LC415628] (20ug) can be purchased separately from OriGene.



HEK293T cells transfected with either [RC203449] overexpress plasmid (Red) or empty vector control plasmid (Blue) were immunostained by anti-C18orf8 antibody (TA504561), and then analyzed by flow cytometry.