

Product datasheet for **TA504557AM**

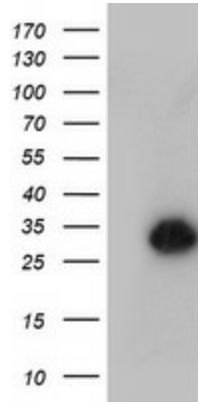
NANP Mouse Monoclonal Antibody (Biotin conjugated) [Clone ID: OTI2C2]

Product data:

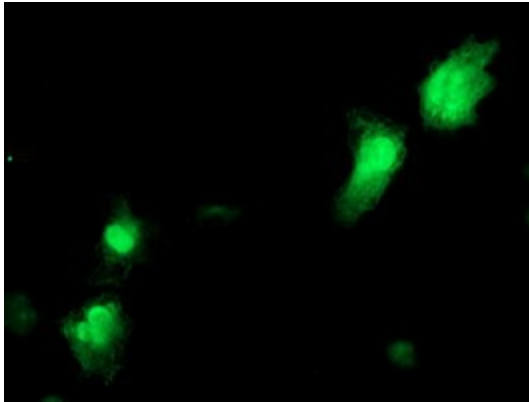
Product Type:	Primary Antibodies
Clone Name:	OTI2C2
Applications:	IF, WB
Recommended Dilution:	WB 1:2000, IF 1:100
Reactivity:	Human, Mouse, Rat
Host:	Mouse
Isotype:	IgG2a
Clonality:	Monoclonal
Immunogen:	Full length human recombinant protein of human NANP(NP_689880) produced in HEK293T cell.
Formulation:	PBS (pH 7.3) containing 1% BSA, 50% glycerol and 0.02% sodium azide.
Concentration:	0.5 mg/ml
Purification:	Purified from mouse ascites fluids or tissue culture supernatant by affinity chromatography (protein A/G)
Conjugation:	Biotin
Storage:	Store at -20°C as received.
Stability:	Stable for 12 months from date of receipt.
Predicted Protein Size:	27.6 kDa
Gene Name:	N-acetylneuraminic acid phosphatase
Database Link:	NP_689880 Entrez Gene 67311 Mouse Entrez Gene 311530 Rat Entrez Gene 140838 Human Q8TBE9
Synonyms:	C20orf147; dj694B14.3; HDHD4
Protein Pathways:	Amino sugar and nucleotide sugar metabolism, Metabolic pathways



[View online »](#)

Product images:

HEK293T cells were transfected with the pCMV6-ENTRY control (Left lane) or pCMV6-ENTRY NANP ([RC205503], Right lane) cDNA for 48 hrs and lysed. Equivalent amounts of cell lysates (5 ug per lane) were separated by SDS-PAGE and immunoblotted with anti-NANP. Positive lysates [LY407388] (100ug) and [LC407388] (20ug) can be purchased separately from OriGene.



Anti-NANP mouse monoclonal antibody ([TA504557]) immunofluorescent staining of COS7 cells transiently transfected by pCMV6-ENTRY NANP ([RC205503]).