

## Product datasheet for **TA504555M**

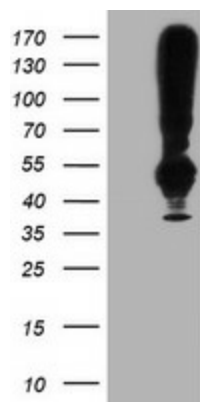
### TMEFF2 Mouse Monoclonal Antibody [Clone ID: OTI1E1]

#### Product data:

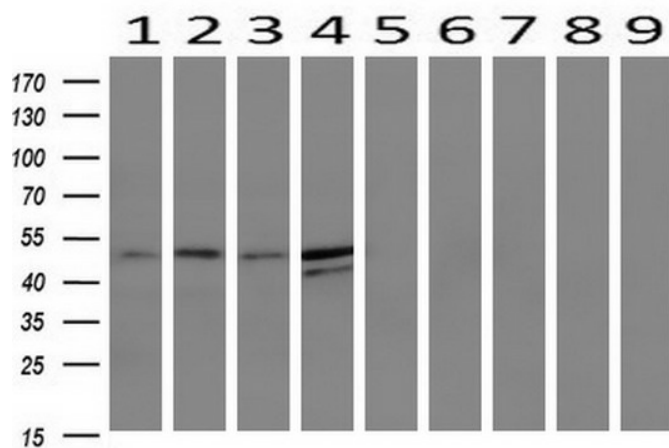
Product Type:	Primary Antibodies
Clone Name:	OTI1E1
Applications:	FC, IF, WB
Recommended Dilution:	WB 1:2000, IF 1:100, FLOW 1:100
Reactivity:	Human, Mouse
Host:	Mouse
Isotype:	IgG2a
Clonality:	Monoclonal
Immunogen:	Full length human recombinant protein of human TMEFF2(NP_057276) produced in HEK293T cell.
Formulation:	PBS (pH 7.3) containing 1% BSA, 50% glycerol and 0.02% sodium azide.
Concentration:	1.25 mg/ml
Purification:	Purified from mouse ascites fluids or tissue culture supernatant by affinity chromatography (protein A/G)
Conjugation:	Unconjugated
Storage:	Store at -20°C as received.
Stability:	Stable for 12 months from date of receipt.
Predicted Protein Size:	41.2 kDa
Gene Name:	transmembrane protein with EGF like and two follistatin like domains 2
Database Link:	<a href="#">NP_057276</a> <a href="#">Entrez Gene 23671 Human</a> <a href="#">Q9UIK5</a>
Synonyms:	CT120.2; HPP1; TENB2; TPEF; TR; TR-2
Protein Families:	Transmembrane


[View online »](#)

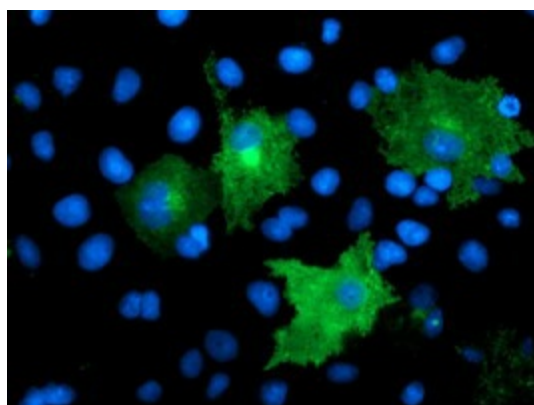
## Product images:



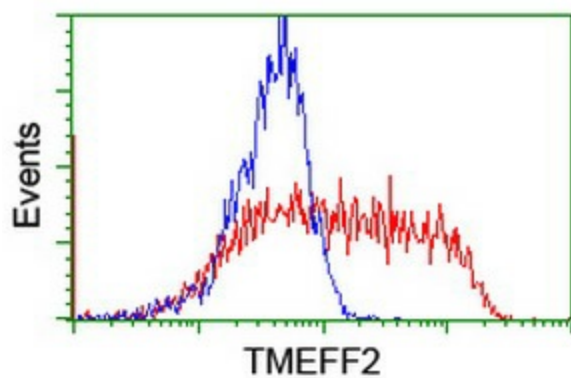
HEK293T cells were transfected with the pCMV6-ENTRY control (Left lane) or pCMV6-ENTRY TMEFF2 ([RC203736], Right lane) cDNA for 48 hrs and lysed. Equivalent amounts of cell lysates (5 ug per lane) were separated by SDS-PAGE and immunoblotted with anti-TMEFF2. Positive lysates [LY402517] (100ug) and [LC402517] (20ug) can be purchased separately from OriGene.



Western blot analysis of extracts (10ug) from 9 Human tissue by using anti-TMEFF2 monoclonal antibody at 1:200 (1: Testis; 2: Omentum; 3: Uterus; 4: Breast; 5: Brain; 6: Liver; 7: Ovary; 8: Thyroid gland; 9: Colon).



Anti-TMEFF2 mouse monoclonal antibody ([TA504555]) immunofluorescent staining of COS7 cells transiently transfected by pCMV6-ENTRY TMEFF2 ([RC203736]).



HEK293T cells transfected with either [RC203736] overexpress plasmid (Red) or empty vector control plasmid (Blue) were immunostained by anti-TMEFF2 antibody ([TA504555]), and then analyzed by flow cytometry.