

Product datasheet for **TA504550BM**

PSMA (FOLH1) Mouse Monoclonal Antibody (HRP conjugated) [Clone ID: OTI3E8]

Product data:

Product Type:	Primary Antibodies
Clone Name:	OTI3E8
Applications:	ELISA, WB
Recommended Dilution:	WB 1:1000~2000
Reactivity:	Human, Mouse
Host:	Mouse
Isotype:	IgG1
Clonality:	Monoclonal
Immunogen:	Full length human recombinant protein of human FOLH1(NP_004667) produced in HEK293T cell.
Formulation:	PBS (pH 7.3) containing 1% BSA, 50% glycerol.
Concentration:	0.5 mg/ml
Purification:	Purified from mouse ascites fluids or tissue culture supernatant by affinity chromatography (protein A/G)
Conjugation:	HRP
Storage:	Store at -20°C as received.
Stability:	Stable for 12 months from date of receipt.
Predicted Protein Size:	84.2 kDa
Gene Name:	folate hydrolase 1
Database Link:	NP_004467 Entrez Gene 53320 Mouse Entrez Gene 2346 Human Q04609



[View online »](#)

Background:

This gene encodes a type II transmembrane glycoprotein belonging to the M28 peptidase family. The protein acts as a glutamate carboxypeptidase on different alternative substrates, including the nutrient folate and the neuropeptide N-acetyl-L-aspartyl-L-glutamate and is expressed in a number of tissues such as prostate, central and peripheral nervous system and kidney. A mutation in this gene may be associated with impaired intestinal absorption of dietary folates, resulting in low blood folate levels and consequent hyperhomocysteinemia. Expression of this protein in the brain may be involved in a number of pathological conditions associated with glutamate excitotoxicity. In the prostate the protein is up-regulated in cancerous cells and is used as an effective diagnostic and prognostic indicator of prostate cancer. This gene likely arose from a duplication event of a nearby chromosomal region. Alternative splicing gives rise to multiple transcript variants encoding several different isoforms. [provided by RefSeq]

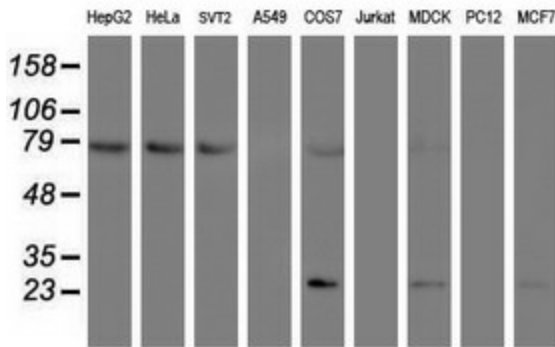
Synonyms:

FGCP; FOLH; GCP2; GCPII; mGCP; NAALAD1; NAALAdase; PSM; PSMA

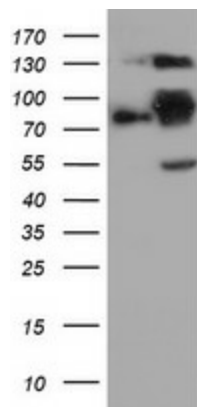
Protein Families:

Druggable Genome, Protease, Transmembrane

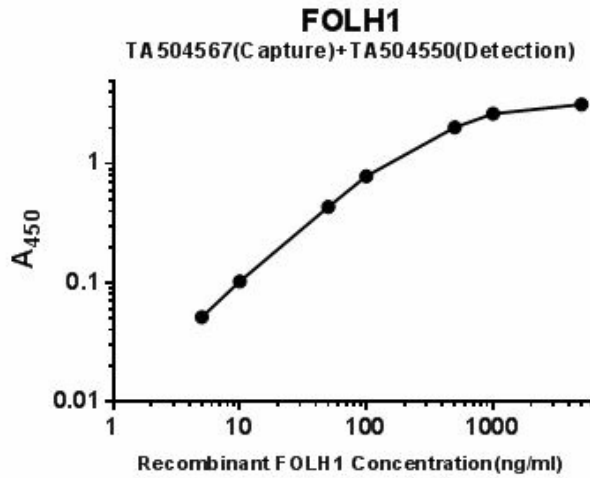
Product images:



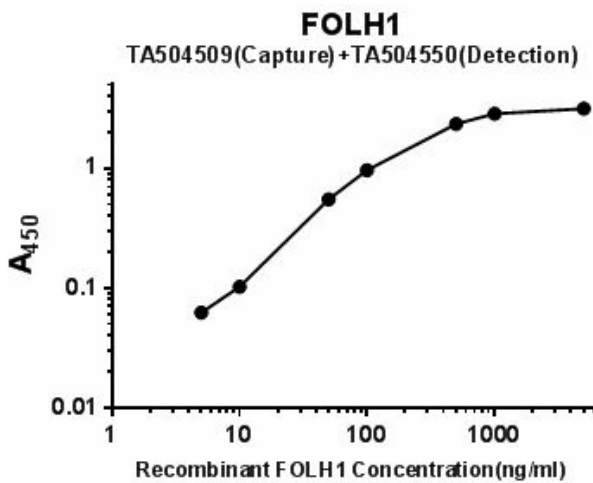
Western blot analysis of extracts (35ug) from 9 different cell lines by using anti-FOLH1 monoclonal antibody.



HEK293T cells were transfected with the pCMV6-ENTRY control (Left lane) or pCMV6-ENTRY FOLH1 ([RC218310], Right lane) cDNA for 48 hrs and lysed. Equivalent amounts of cell lysates (5 ug per lane) were separated by SDS-PAGE and immunoblotted with anti-FOLH1. Positive lysates [LY429203] (100ug) and [LC429203] (20ug) can be purchased separately from OriGene.



Standard curve for ELISA analysis with FOLH1 recombinant protein (dilution range from 5ng/ml to 5ug/ml) using FOLH1 Capture Antibody (Cat# [TA504567]) at 5ug/ml and HRP conjugated FOLH1 Detection mAb (Cat# [TA504550]) at 0.03ug/ml.



Standard curve for ELISA analysis with FOLH1 recombinant protein (dilution range from 5ng/ml to 5ug/ml) using FOLH1 Capture Antibody (Cat# [TA504509]) at 5ug/ml and HRP conjugated FOLH1 Detection mAb (Cat# [TA504550]) at 0.03ug/ml.