

Product datasheet for **TA504546AM**

LRRC50 (DNAAF1) Mouse Monoclonal Antibody (Biotin conjugated) [Clone ID: OTI2C4]

Product data:

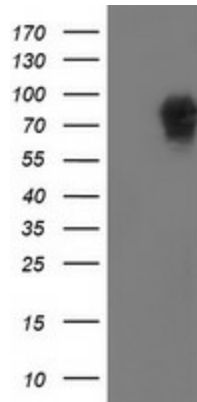
Product Type:	Primary Antibodies
Clone Name:	OTI2C4
Applications:	FC, WB
Recommended Dilution:	WB 1:500~2000, FLOW 1:100
Reactivity:	Human, Dog, Rat, Monkey, Mouse
Host:	Mouse
Isotype:	IgG1
Clonality:	Monoclonal
Immunogen:	Full length human recombinant protein of human LRRC50(NP_848547) produced in HEK293T cell.
Formulation:	PBS (pH 7.3) containing 1% BSA, 50% glycerol and 0.02% sodium azide.
Concentration:	0.5 mg/ml
Purification:	Purified from mouse ascites fluids or tissue culture supernatant by affinity chromatography (protein A/G)
Conjugation:	Biotin
Storage:	Store at -20°C as received.
Stability:	Stable for 12 months from date of receipt.
Predicted Protein Size:	79.8 kDa
Gene Name:	dynein axonemal assembly factor 1
Database Link:	NP_848547 Entrez Gene 68270 Mouse Entrez Gene 361419 Rat Entrez Gene 479628 Dog Entrez Gene 715137 Monkey Entrez Gene 123872 Human Q8NEP3
Background:	The protein encoded by this gene is cilium-specific and is required for the stability of the ciliary architecture. It is involved in the regulation of microtubule-based cilia and actin-based brush border microvilli. Mutations in this gene are associated with primary ciliary dyskinesia-13. COMPLETENESS: complete on the 3' end.



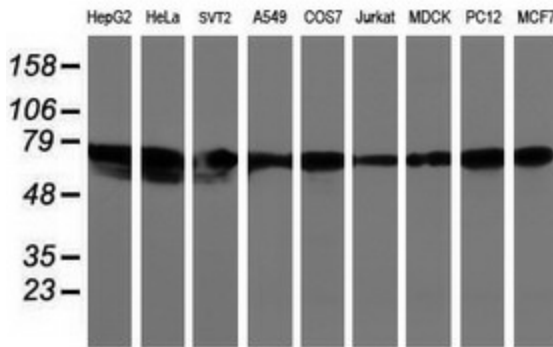
[View online »](#)

Synonyms: CILD13; LRRC50; ODA7; swt

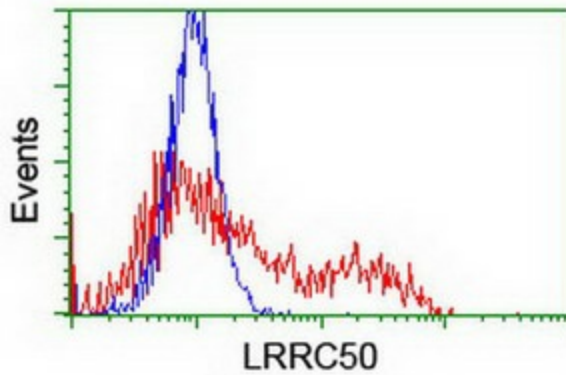
Product images:



HEK293T cells were transfected with the pCMV6-ENTRY control (Cat# [PS100001], Left lane) or pCMV6-ENTRY LRRC50 (Cat# [RC205452], Right lane) cDNA for 48 hrs and lysed. Equivalent amounts of cell lysates (5 ug per lane) were separated by SDS-PAGE and immunoblotted with anti-LRRC50(Cat# [TA504546]). Positive lysates [LY405926] (100ug) and [LC405926] (20ug) can be purchased separately from OriGene.



Western blot analysis of extracts (35ug) from 9 different cell lines by using anti-LRRC50 monoclonal antibody (HepG2: human; HeLa: human; SVT2: mouse; A549: human; COS7: monkey; Jurkat: human; MDCK: canine; PC12: rat; MCF7: human).



HEK293T cells transfected with either [RC205452] overexpress plasmid (Red) or empty vector control plasmid (Blue) were immunostained by anti-LRRC50 antibody ([TA504546]), and then analyzed by flow cytometry.