

## Product datasheet for **TA504546**

### **LRRC50 (DNAAF1) Mouse Monoclonal Antibody [Clone ID: OTI2C4]**

#### **Product data:**

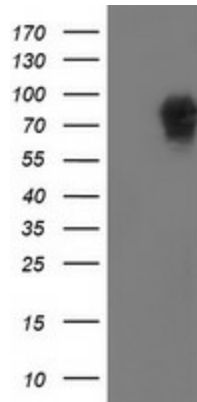
<b>Product Type:</b>	Primary Antibodies
<b>Clone Name:</b>	OTI2C4
<b>Applications:</b>	FC, WB
<b>Recommended Dilution:</b>	WB 1:500~2000, FLOW 1:100
<b>Reactivity:</b>	Human, Dog, Rat, Monkey, Mouse
<b>Host:</b>	Mouse
<b>Isotype:</b>	IgG1
<b>Clonality:</b>	Monoclonal
<b>Immunogen:</b>	Full length human recombinant protein of human LRRC50(NP_848547) produced in HEK293T cell.
<b>Formulation:</b>	PBS (pH 7.3) containing 1% BSA, 50% glycerol and 0.02% sodium azide.
<b>Concentration:</b>	2.74 mg/ml
<b>Purification:</b>	Purified from mouse ascites fluids or tissue culture supernatant by affinity chromatography (protein A/G)
<b>Conjugation:</b>	Unconjugated
<b>Storage:</b>	Store at -20°C as received.
<b>Stability:</b>	Stable for 12 months from date of receipt.
<b>Predicted Protein Size:</b>	79.8 kDa
<b>Gene Name:</b>	dynein axonemal assembly factor 1
<b>Database Link:</b>	<a href="#">NP_848547</a> <a href="#">Entrez Gene 68270</a> <a href="#">MouseEntrez Gene 361419</a> <a href="#">RatEntrez Gene 479628</a> <a href="#">DogEntrez Gene 715137</a> <a href="#">MonkeyEntrez Gene 123872</a> <a href="#">Human Q8NEP3</a>
<b>Background:</b>	The protein encoded by this gene is cilium-specific and is required for the stability of the ciliary architecture. It is involved in the regulation of microtubule-based cilia and actin-based brush border microvilli. Mutations in this gene are associated with primary ciliary dyskinesia-13. COMPLETENESS: complete on the 3' end.



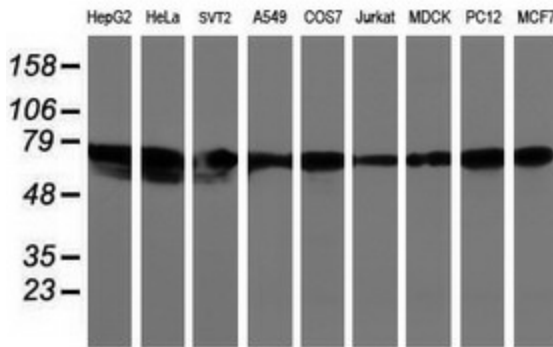
[View online »](#)

Synonyms: CILD13; LRRC50; ODA7; swt

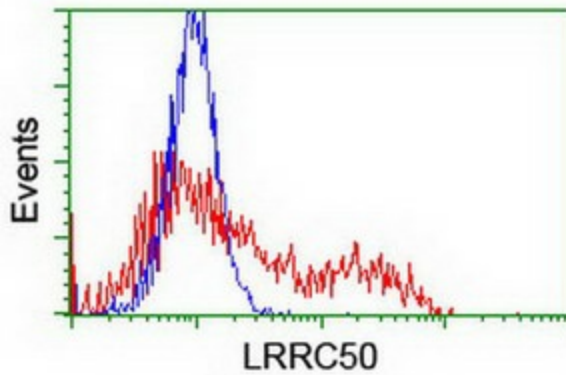
**Product images:**



HEK293T cells were transfected with the pCMV6-ENTRY control (Cat# [PS100001], Left lane) or pCMV6-ENTRY LRRC50 (Cat# [RC205452], Right lane) cDNA for 48 hrs and lysed. Equivalent amounts of cell lysates (5 ug per lane) were separated by SDS-PAGE and immunoblotted with anti-LRRC50(Cat# TA504546). Positive lysates [LY405926] (100ug) and [LC405926] (20ug) can be purchased separately from OriGene.



Western blot analysis of extracts (35ug) from 9 different cell lines by using anti-LRRC50 monoclonal antibody (HepG2: human; HeLa: human; SVT2: mouse; A549: human; COS7: monkey; Jurkat: human; MDCK: canine; PC12: rat; MCF7: human).



HEK293T cells transfected with either [RC205452] overexpress plasmid (Red) or empty vector control plasmid (Blue) were immunostained by anti-LRRC50 antibody (TA504546), and then analyzed by flow cytometry.