

## Product datasheet for **TA504532**

### LIM1 (LHX1) Mouse Monoclonal Antibody [Clone ID: OTI1D1]

#### Product data:

Product Type:	Primary Antibodies
Clone Name:	OTI1D1
Applications:	WB
Recommended Dilution:	WB 1:2000
Reactivity:	Human, Mouse, Rat
Host:	Mouse
Isotype:	IgG1
Clonality:	Monoclonal
Immunogen:	Human recombinant protein fragment corresponding to amino acids 100-362 of human LHX1(NP_005559) produced in E.coli.
Formulation:	PBS (pH 7.3) containing 1% BSA, 50% glycerol and 0.02% sodium azide.
Concentration:	1 mg/ml
Purification:	Purified from mouse ascites fluids or tissue culture supernatant by affinity chromatography (protein A/G)
Conjugation:	Unconjugated
Storage:	Store at -20°C as received.
Stability:	Stable for 12 months from date of receipt.
Predicted Protein Size:	44.6 kDa
Gene Name:	LIM homeobox 1
Database Link:	<a href="#">NP_005559</a> <a href="#">Entrez Gene 16869 Mouse</a> <a href="#">Entrez Gene 257634 Rat</a> <a href="#">Entrez Gene 3975 Human</a> <a href="#">P48742</a>
Background:	This gene encodes a member of a large protein family which contains the LIM domain, a unique cysteine-rich zinc-binding domain. The encoded protein is a transcription factor important for the development of the renal and urogenital systems. This gene is a candidate for Mayer-Rokitansky-Kuster-Hauser syndrome, a disorder characterized by anomalies in the female genital tract. [provided by RefSeq, Dec 2010]

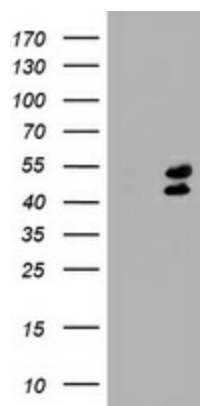


[View online »](#)

Synonyms: LIM-1; LIM1

Protein Families: ES Cell Differentiation/IPS, Transcription Factors

### Product images:



HEK293T cells were transfected with the pCMV6-ENTRY control (Left lane) or pCMV6-ENTRY LHX1 ([RC210977], Right lane) cDNA for 48 hrs and lysed. Equivalent amounts of cell lysates (5 ug per lane) were separated by SDS-PAGE and immunoblotted with anti-LHX1. Positive lysates [LY417207] (100ug) and [LC417207] (20ug) can be purchased separately from OriGene.