

## Product datasheet for **TA504526M**

### LIM1 (LHX1) Mouse Monoclonal Antibody [Clone ID: OT11A5]

#### Product data:

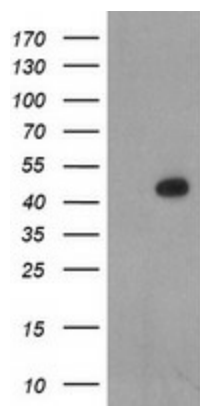
Product Type:	Primary Antibodies
Clone Name:	OT11A5
Applications:	FC, IF, WB
Recommended Dilution:	WB 1:1000, IF 1:100, FLOW 1:100
Reactivity:	Human, Mouse, Rat
Host:	Mouse
Isotype:	IgG1
Clonality:	Monoclonal
Immunogen:	Human recombinant protein fragment corresponding to amino acids 100-362 of human LHX1(NP_005559) produced in E.coli.
Formulation:	PBS (pH 7.3) containing 1% BSA, 50% glycerol and 0.02% sodium azide.
Concentration:	0.92 mg/ml
Purification:	Purified from mouse ascites fluids or tissue culture supernatant by affinity chromatography (protein A/G)
Conjugation:	Unconjugated
Storage:	Store at -20°C as received.
Stability:	Stable for 12 months from date of receipt.
Predicted Protein Size:	44.6 kDa
Gene Name:	LIM homeobox 1
Database Link:	<a href="#">NP_005559</a> <a href="#">Entrez Gene 16869 Mouse</a> <a href="#">Entrez Gene 257634 Rat</a> <a href="#">Entrez Gene 3975 Human</a> <a href="#">P48742</a>
Background:	This gene encodes a member of a large protein family which contains the LIM domain, a unique cysteine-rich zinc-binding domain. The encoded protein is a transcription factor important for the development of the renal and urogenital systems. This gene is a candidate for Mayer-Rokitansky-Kuster-Hauser syndrome, a disorder characterized by anomalies in the female genital tract. [provided by RefSeq]


[View online »](#)

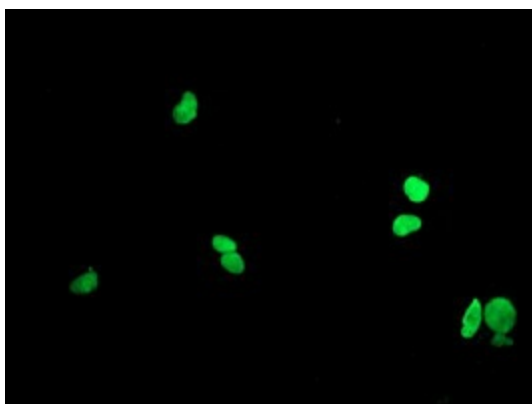
**Synonyms:** LIM-1; LIM1

**Protein Families:** ES Cell Differentiation/IPS, Transcription Factors

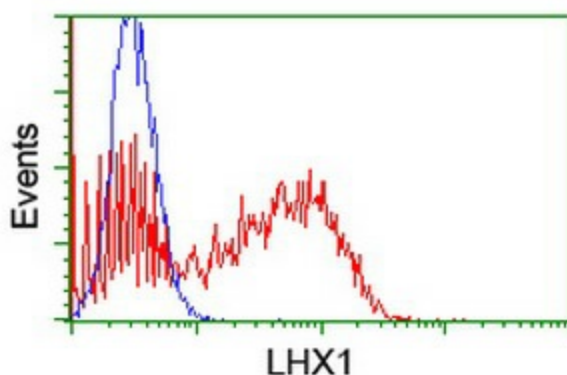
**Product images:**



HEK293T cells were transfected with the pCMV6-ENTRY control (Left lane) or pCMV6-ENTRY LHX1 ([RC210977], Right lane) cDNA for 48 hrs and lysed. Equivalent amounts of cell lysates (5 ug per lane) were separated by SDS-PAGE and immunoblotted with anti-LHX1. Positive lysates [LY417207] (100ug) and [LC417207] (20ug) can be purchased separately from OriGene.



Anti-LHX1 mouse monoclonal antibody ([TA504526]) immunofluorescent staining of COS7 cells transiently transfected by pCMV6-ENTRY LHX1 ([RC210977]).



HEK293T cells transfected with either [RC210977] overexpress plasmid (Red) or empty vector control plasmid (Blue) were immunostained by anti-LHX1 antibody ([TA504526]), and then analyzed by flow cytometry.