

## Product datasheet for **TA504522**

### Carboxypeptidase A (CPA1) Mouse Monoclonal Antibody [Clone ID: OTI4F10]

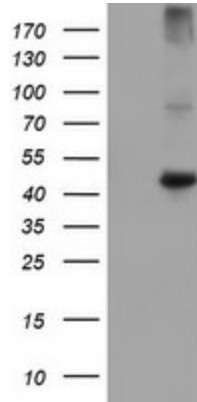
#### Product data:

Product Type:	Primary Antibodies
Clone Name:	OTI4F10
Applications:	FC, IF, WB
Recommended Dilution:	WB 1:500~2000, IF 1:100, FLOW 1:100
Reactivity:	Human
Host:	Mouse
Isotype:	IgG1
Clonality:	Monoclonal
Immunogen:	Full length human recombinant protein of human CPA1(NP_001859) produced in HEK293T cell.
Formulation:	PBS (pH 7.3) containing 1% BSA, 50% glycerol and 0.02% sodium azide.
Concentration:	0.91 mg/ml
Purification:	Purified from mouse ascites fluids or tissue culture supernatant by affinity chromatography (protein A/G)
Conjugation:	Unconjugated
Storage:	Store at -20°C as received.
Stability:	Stable for 12 months from date of receipt.
Predicted Protein Size:	45.5 kDa
Gene Name:	carboxypeptidase A1
Database Link:	<a href="#">NP_001859</a> <a href="#">Entrez Gene 1357 Human</a> <a href="#">P15085</a>
Background:	Three different forms of human pancreatic procarboxypeptidase A have been isolated. This gene encodes a monomeric pancreatic exopeptidase involved in zymogen inhibition. [provided by RefSeq]. COMPLETENESS: complete on the 3' end.
Synonyms:	CPA
Protein Families:	Druggable Genome, ES Cell Differentiation/IPS, Protease, Secreted Protein

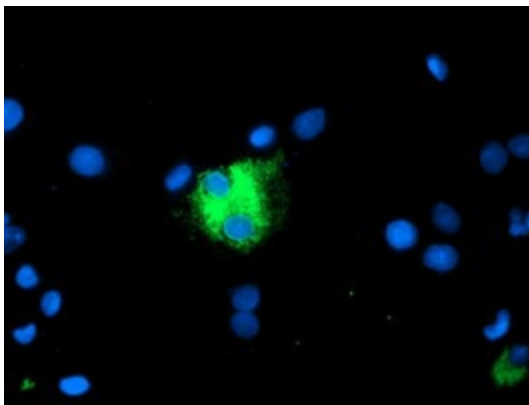


[View online »](#)

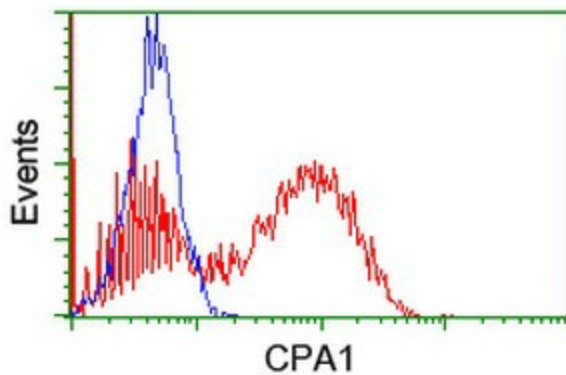
**Product images:**



HEK293T cells were transfected with the pCMV6-ENTRY control (Left lane) or pCMV6-ENTRY CPA1 ([RC202720], Right lane) cDNA for 48 hrs and lysed. Equivalent amounts of cell lysates (5 ug per lane) were separated by SDS-PAGE and immunoblotted with anti-CPA1. Positive lysates [LY419696] (100ug) and [LC419696] (20ug) can be purchased separately from OriGene.



Anti-CPA1 mouse monoclonal antibody (TA504522) immunofluorescent staining of COS7 cells transiently transfected by pCMV6-ENTRY CPA1 ([RC202720]).



HEK293T cells transfected with either [RC202720] overexpress plasmid (Red) or empty vector control plasmid (Blue) were immunostained by anti-CPA1 antibody (TA504522), and then analyzed by flow cytometry.