

Product datasheet for **TA504517**

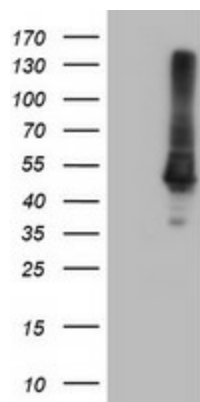
Carboxypeptidase A (CPA1) Mouse Monoclonal Antibody [Clone ID: OTI2E3]

Product data:

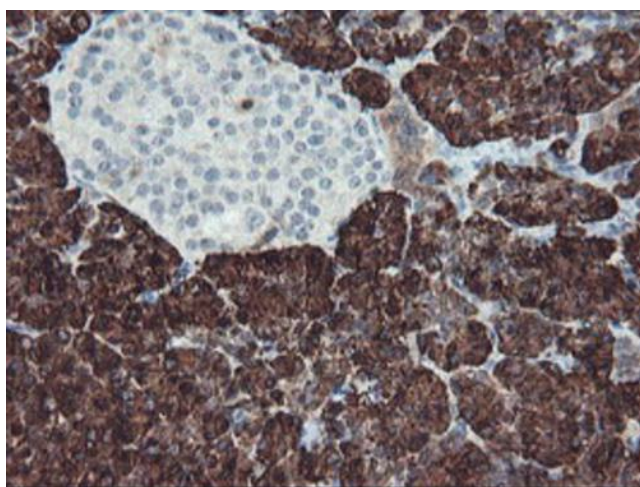
Product Type:	Primary Antibodies
Clone Name:	OTI2E3
Applications:	FC, IF, IHC, WB
Recommended Dilution:	WB 1:2000, IHC 1:150, IF 1:100, FLOW 1:100
Reactivity:	Human
Host:	Mouse
Isotype:	IgG2a
Clonality:	Monoclonal
Immunogen:	Full length human recombinant protein of human CPA1(NP_001859) produced in HEK293T cell.
Formulation:	PBS (pH 7.3) containing 1% BSA, 50% glycerol and 0.02% sodium azide.
Concentration:	0.88 mg/ml
Purification:	Purified from mouse ascites fluids or tissue culture supernatant by affinity chromatography (protein A/G)
Conjugation:	Unconjugated
Storage:	Store at -20°C as received.
Stability:	Stable for 12 months from date of receipt.
Predicted Protein Size:	45.5 kDa
Gene Name:	carboxypeptidase A1
Database Link:	NP_001859 Entrez Gene 1357 Human P15085
Background:	Three different forms of human pancreatic procarboxypeptidase A have been isolated. This gene encodes a monomeric pancreatic exopeptidase involved in zymogen inhibition. [provided by RefSeq]. COMPLETENESS: complete on the 3' end.
Synonyms:	CPA
Protein Families:	Druggable Genome, ES Cell Differentiation/IPS, Protease, Secreted Protein



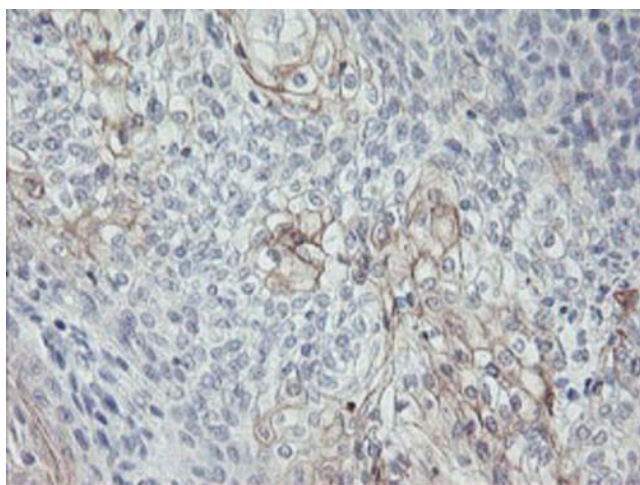
[View online »](#)

Product images:

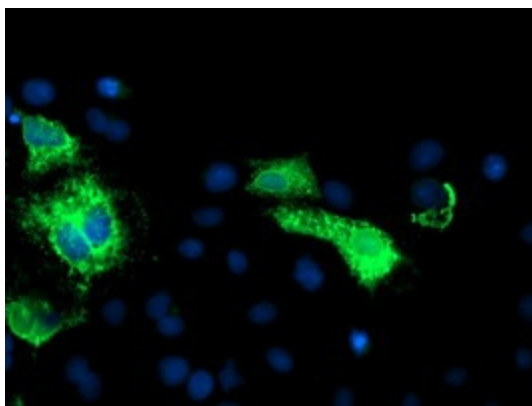
HEK293T cells were transfected with the pCMV6-ENTRY control (Left lane) or pCMV6-ENTRY CPA1 ([RC202720], Right lane) cDNA for 48 hrs and lysed. Equivalent amounts of cell lysates (5 ug per lane) were separated by SDS-PAGE and immunoblotted with anti-CPA1. Positive lysates [LY419696] (100ug) and [LC419696] (20ug) can be purchased separately from OriGene.



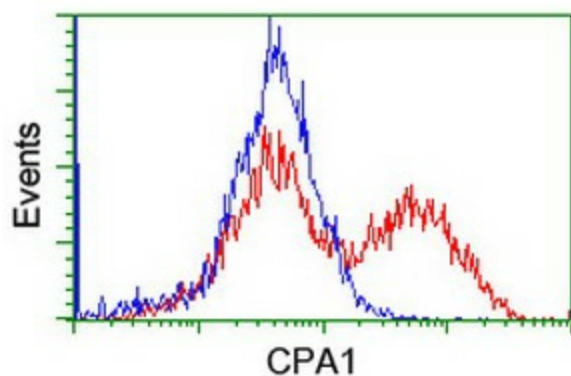
Immunohistochemical staining of paraffin-embedded Human pancreas tissue within the normal limits using anti-CPA1 mouse monoclonal antibody. Heat-induced epitope retrieval by EDTA solution buffer pH 8.0 at 120°C for 3 min.



Immunohistochemical staining of paraffin-embedded Carcinoma of Human bladder tissue using anti-CPA1 mouse monoclonal antibody. Heat-induced epitope retrieval by EDTA solution buffer pH 8.0 at 120°C for 3 min.



Anti-CPA1 mouse monoclonal antibody (TA504517) immunofluorescent staining of COS7 cells transiently transfected by pCMV6-ENTRY CPA1 ([RC202720]).



HEK293T cells transfected with either [RC202720] overexpress plasmid (Red) or empty vector control plasmid (Blue) were immunostained by anti-CPA1 antibody (TA504517), and then analyzed by flow cytometry.