

## Product datasheet for **TA504498AM**

### Phosphoribosyl pyrophosphate amidotransferase (PPAT) Mouse Monoclonal Antibody (Biotin conjugated) [Clone ID: OTI1C4]

#### Product data:

Product Type:	Primary Antibodies
Clone Name:	OTI1C4
Applications:	WB
Recommended Dilution:	WB 1:2000
Reactivity:	Human, Mouse, Rat
Host:	Mouse
Isotype:	IgG1
Clonality:	Monoclonal
Immunogen:	Human recombinant protein fragment corresponding to amino acids 42-278 of human PPAT(NP_002694) produced in E.coli.
Formulation:	PBS (pH 7.3) containing 1% BSA, 50% glycerol and 0.02% sodium azide.
Concentration:	0.5 mg/ml
Purification:	Purified from mouse ascites fluids or tissue culture supernatant by affinity chromatography (protein A/G)
Conjugation:	Biotin
Storage:	Store at -20°C as received.
Stability:	Stable for 12 months from date of receipt.
Predicted Protein Size:	57.2 kDa
Gene Name:	phosphoribosyl pyrophosphate amidotransferase
Database Link:	<a href="#">NP_002694</a> <a href="#">Entrez Gene 117544 RatEntrez Gene 231327 MouseEntrez Gene 5471 Human Q06203</a>



[View online »](#)

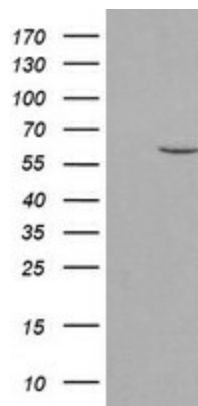
**Background:** The protein encoded by this gene is a member of the purine/pyrimidine phosphoribosyltransferase family. It is a regulatory allosteric enzyme that catalyzes the first step of de novo purine nucleotide biosynthetic pathway. This gene and PAICS/AIRC gene, a bifunctional enzyme catalyzing steps six and seven of this pathway, are located in close proximity on chromosome 4, and divergently transcribed from an intergenic region. [provided by RefSeq]. COMPLETENESS: complete on the 3' end.

**Synonyms:** ATASE; GPAT; PRAT

**Protein Families:** Druggable Genome, Protease

**Protein Pathways:** Alanine, aspartate and glutamate metabolism, Metabolic pathways, Purine metabolism

### Product images:



HEK293T cells were transfected with the pCMV6-ENTRY control (Left lane) or pCMV6-ENTRY PPAT ([RC201144], Right lane) cDNA for 48 hrs and lysed. Equivalent amounts of cell lysates (5 ug per lane) were separated by SDS-PAGE and immunoblotted with anti-PPAT. Positive lysates [LY400951] (100ug) and [LC400951] (20ug) can be purchased separately from OriGene.