

Product datasheet for **TA504485**

SCHIP1 Mouse Monoclonal Antibody [Clone ID: OTI1G6]

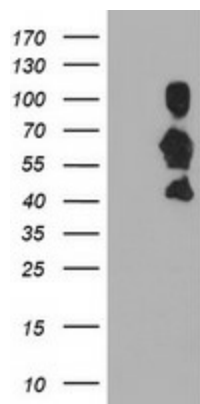
Product data:

| | |
|--------------------------------|--|
| Product Type: | Primary Antibodies |
| Clone Name: | OTI1G6 |
| Applications: | FC, IF, WB |
| Recommended Dilution: | WB 1:2000, IF 1:100, FLOW 1:100 |
| Reactivity: | Human, Mouse |
| Host: | Mouse |
| Isotype: | IgG1 |
| Clonality: | Monoclonal |
| Immunogen: | Full length human recombinant protein of human SCHIP1(NP_055390) produced in HEK293T cell. |
| Formulation: | PBS (PH 7.3) containing 1% BSA, 50% glycerol and 0.02% sodium azide. |
| Concentration: | 0.49 mg/ml |
| Purification: | Purified from mouse ascites fluids or tissue culture supernatant by affinity chromatography (protein A/G) |
| Storage: | Store at -20°C as received. |
| Stability: | Stable for 12 months from date of receipt. |
| Predicted Protein Size: | 53.3 kDa |
| Gene Name: | schwannomin interacting protein 1 |
| Database Link: | <u>NP_055390</u> <u>Entrez Gene 30953</u> <u>Mouse</u> <u>Entrez Gene 29970</u> <u>Human</u> |
| Synonyms: | SCHIP-1 |

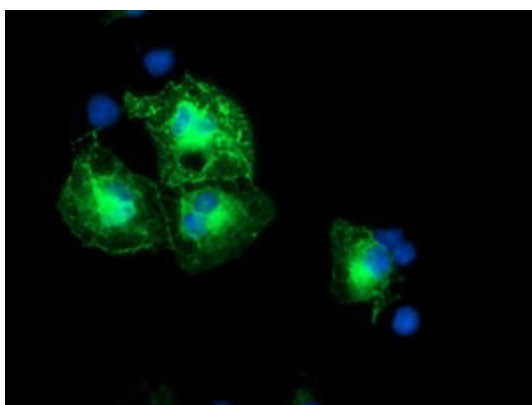


[View online »](#)

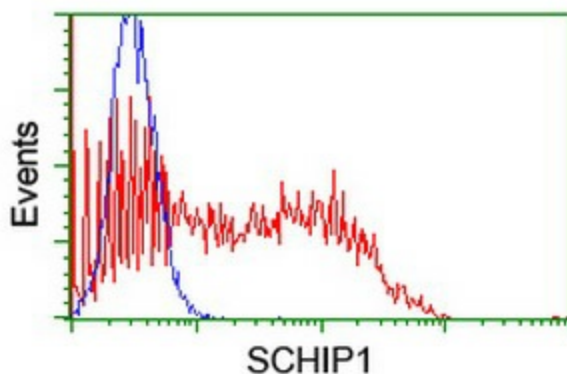
Product images:



HEK293T cells were transfected with the pCMV6-ENTRY control (Left lane) or pCMV6-ENTRY SCHIP1 ([RC206269], Right lane) cDNA for 48 hrs and lysed. Equivalent amounts of cell lysates (5 ug per lane) were separated by SDS-PAGE and immunoblotted with anti-SCHIP1. Positive lysates [LY415194] (100ug) and [LC415194] (20ug) can be purchased separately from OriGene.



Anti-SCHIP1 mouse monoclonal antibody (TA504485) immunofluorescent staining of COS7 cells transiently transfected by pCMV6-ENTRY SCHIP1 ([RC206269]).



HEK293T cells transfected with either [RC206269] overexpress plasmid (Red) or empty vector control plasmid (Blue) were immunostained by anti-SCHIP1 antibody (TA504485), and then analyzed by flow cytometry.

