

Product datasheet for **TA504482**

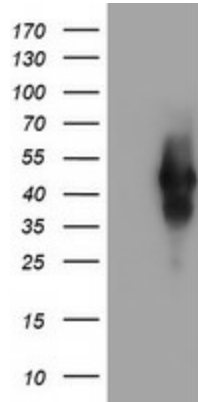
TMEFF2 Mouse Monoclonal Antibody [Clone ID: OTI3H8]

Product data:

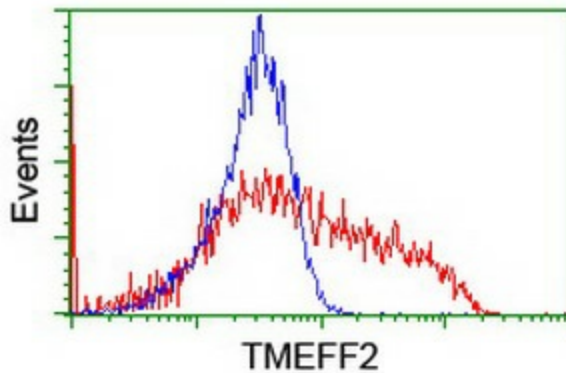
Product Type:	Primary Antibodies
Clone Name:	OTI3H8
Applications:	FC, WB
Recommended Dilution:	WB 1:2000, FLOW 1:100
Reactivity:	Human, Mouse
Host:	Mouse
Isotype:	IgG2a
Clonality:	Monoclonal
Immunogen:	Full length human recombinant protein of human TMEFF2(NP_057276) produced in HEK293T cell.
Formulation:	PBS (pH 7.3) containing 1% BSA, 50% glycerol and 0.02% sodium azide.
Concentration:	0.75 mg/ml
Purification:	Purified from mouse ascites fluids or tissue culture supernatant by affinity chromatography (protein A/G)
Conjugation:	Unconjugated
Storage:	Store at -20°C as received.
Stability:	Stable for 12 months from date of receipt.
Predicted Protein Size:	41.2 kDa
Gene Name:	transmembrane protein with EGF like and two follistatin like domains 2
Database Link:	NP_057276 Entrez Gene 23671 Human Q9UIK5
Synonyms:	CT120.2; HPP1; TENB2; TPEF; TR; TR-2
Protein Families:	Transmembrane



[View online »](#)

Product images:

HEK293T cells were transfected with the pCMV6-ENTRY control (Left lane) or pCMV6-ENTRY TMEFF2 ([RC203736], Right lane) cDNA for 48 hrs and lysed. Equivalent amounts of cell lysates (5 ug per lane) were separated by SDS-PAGE and immunoblotted with anti-TMEFF2. Positive lysates [LY402517] (100ug) and [LC402517] (20ug) can be purchased separately from OriGene.



HEK293T cells transfected with either [RC203736] overexpress plasmid (Red) or empty vector control plasmid (Blue) were immunostained by anti-TMEFF2 antibody (TA504482), and then analyzed by flow cytometry.