

Product datasheet for **TA504478BM**

S100P Mouse Monoclonal Antibody (HRP conjugated) [Clone ID: OTI1A4]

Product data:

Product Type:	Primary Antibodies
Clone Name:	OTI1A4
Applications:	IF, WB
Recommended Dilution:	WB 1:2000, IF 1:100
Reactivity:	Human
Host:	Mouse
Isotype:	IgG1
Clonality:	Monoclonal
Immunogen:	Full length human recombinant protein of human S100P(NP_005971) produced in HEK293T cell.
Formulation:	PBS (pH 7.3) containing 1% BSA, 50% glycerol.
Concentration:	0.5 mg/ml
Purification:	Purified from mouse ascites fluids or tissue culture supernatant by affinity chromatography (protein A/G)
Conjugation:	HRP
Storage:	Store at -20°C as received.
Stability:	Stable for 12 months from date of receipt.
Predicted Protein Size:	10.2 kDa
Gene Name:	S100 calcium binding protein P
Database Link:	NP_005971 Entrez Gene 6286 Human P25815



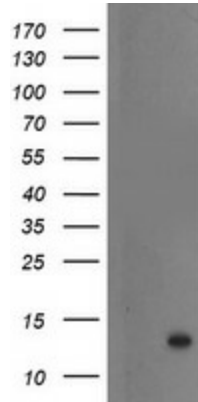
[View online »](#)

Background:

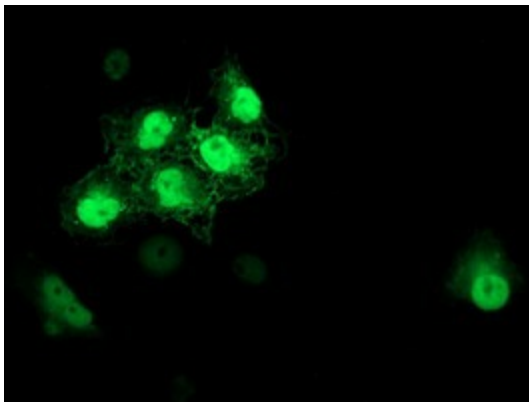
The protein encoded by this gene is a member of the S100 family of proteins containing 2 EF-hand calcium-binding motifs. S100 proteins are localized in the cytoplasm and/or nucleus of a wide range of cells, and involved in the regulation of a number of cellular processes such as cell cycle progression and differentiation. S100 genes include at least 13 members which are located as a cluster on chromosome 1q21; however, this gene is located at 4p16. This protein, in addition to binding Ca²⁺, also binds Zn²⁺ and Mg²⁺. This protein may play a role in the etiology of prostate cancer. [provided by RefSeq]

Synonyms:

MIG9

Product images:

HEK293T cells were transfected with the pCMV6-ENTRY control (Cat# [PS100001], Left lane) or pCMV6-ENTRY S100P (Cat# [RC201533], Right lane) cDNA for 48 hrs and lysed. Equivalent amounts of cell lysates (5 ug per lane) were separated by SDS-PAGE and immunoblotted with anti-S100P (Cat# [TA504478]). Positive lysates [LY401809] (100ug) and [LC401809] (20ug) can be purchased separately from OriGene.



Anti-S100P mouse monoclonal antibody ([TA504478]) immunofluorescent staining of COS7 cells transiently transfected by pCMV6-ENTRY S100P ([RC201533]).