

Product datasheet for **TA504470BM**

SCHIP1 Mouse Monoclonal Antibody (HRP conjugated) [Clone ID: OTI1C4]

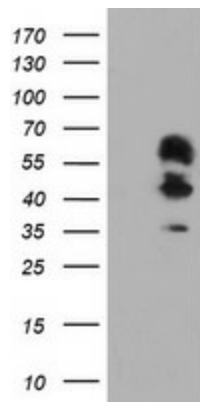
Product data:

Product Type:	Primary Antibodies
Clone Name:	OTI1C4
Applications:	FC, IF, WB
Recommended Dilution:	WB 1:500~2000, IF 1:100, FLOW 1:100
Reactivity:	Human, Dog, Rat, Monkey, Mouse
Host:	Mouse
Isotype:	IgG1
Clonality:	Monoclonal
Immunogen:	Full length human recombinant protein of human SCHIP1(NP_055390) produced in HEK293T cell.
Formulation:	PBS (pH 7.3) containing 1% BSA, 50% glycerol.
Concentration:	0.5 mg/ml
Purification:	Purified from mouse ascites fluids or tissue culture supernatant by affinity chromatography (protein A/G)
Conjugation:	HRP
Storage:	Store at -20°C as received.
Stability:	Stable for 12 months from date of receipt.
Predicted Protein Size:	53.3 kDa
Gene Name:	schwannomin interacting protein 1
Database Link:	NP_055390 Entrez Gene 30953 Mouse Entrez Gene 295105 Rat Entrez Gene 478678 Dog Entrez Gene 703321 Monkey Entrez Gene 29970 Human P0DPB3
Synonyms:	SCHIP-1

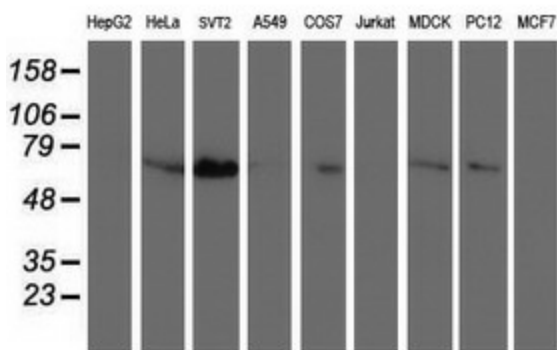


[View online »](#)

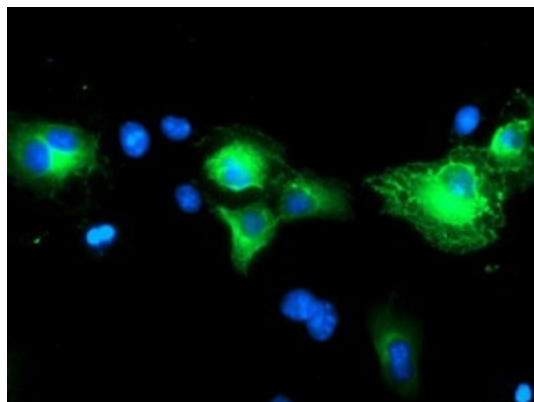
Product images:



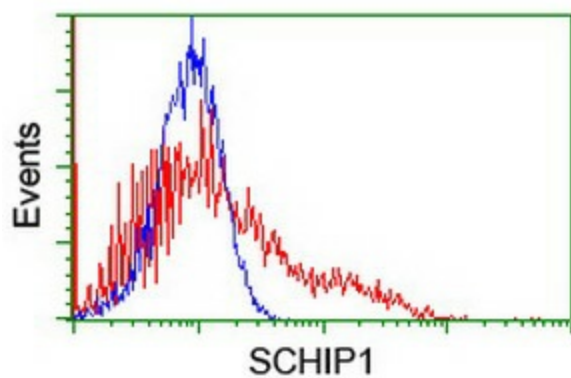
HEK293T cells were transfected with the pCMV6-ENTRY control (Left lane) or pCMV6-ENTRY SCHIP1 ([RC206269], Right lane) cDNA for 48 hrs and lysed. Equivalent amounts of cell lysates (5 ug per lane) were separated by SDS-PAGE and immunoblotted with anti-SCHIP1. Positive lysates [LY415194] (100ug) and [LC415194] (20ug) can be purchased separately from OriGene.



Western blot analysis of extracts (35ug) from 9 different cell lines by using anti-SCHIP1 monoclonal antibody.



Anti-SCHIP1 mouse monoclonal antibody ([TA504470]) immunofluorescent staining of COS7 cells transiently transfected by pCMV6-ENTRY SCHIP1 ([RC206269]).



HEK293T cells transfected with either [RC206269] overexpress plasmid (Red) or empty vector control plasmid (Blue) were immunostained by anti-SCHIP1 antibody ([TA504470]), and then analyzed by flow cytometry.