

## Product datasheet for **TA504462S**

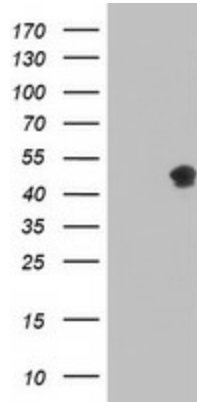
### Protein C inhibitor (SERPINA5) Mouse Monoclonal Antibody [Clone ID: OTI2F2]

#### Product data:

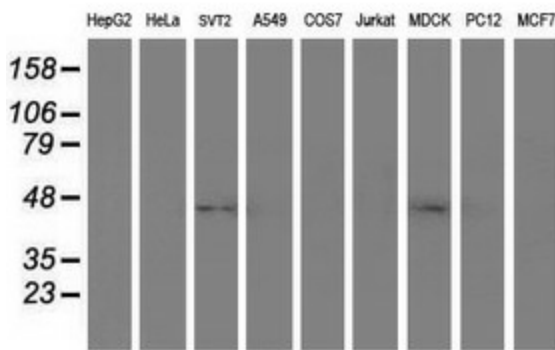
Product Type:	Primary Antibodies
Clone Name:	OTI2F2
Applications:	WB
Recommended Dilution:	WB 1:500~2000
Reactivity:	Human, Dog, Mouse
Host:	Mouse
Isotype:	IgG1
Clonality:	Monoclonal
Immunogen:	Full length human recombinant protein of human SERPINA5(NP_000615) produced in HEK293T cell.
Formulation:	PBS (pH 7.3) containing 1% BSA, 50% glycerol and 0.02% sodium azide.
Concentration:	0.56 mg/ml
Purification:	Purified from mouse ascites fluids or tissue culture supernatant by affinity chromatography (protein A/G)
Conjugation:	Unconjugated
Storage:	Store at -20°C as received.
Stability:	Stable for 12 months from date of receipt.
Predicted Protein Size:	45.5 kDa
Gene Name:	serpin family A member 5
Database Link:	<a href="#">NP_000615</a> <a href="#">Entrez Gene 268591 Mouse</a> <a href="#">Entrez Gene 480424 Dog</a> <a href="#">Entrez Gene 5104 Human</a> <a href="#">P05154</a>
Synonyms:	PAI-3; PAI3; PCI; PCI-B; PLANH3; PROCI
Protein Families:	Druggable Genome, Secreted Protein
Protein Pathways:	Complement and coagulation cascades



[View online »](#)

**Product images:**


HEK293T cells were transfected with the pCMV6-ENTRY control (Left lane) or pCMV6-ENTRY SERPINA5 ([RC203599], Right lane) cDNA for 48 hrs and lysed. Equivalent amounts of cell lysates (5 ug per lane) were separated by SDS-PAGE and immunoblotted with anti-SERPINA5. Positive lysates [LY424603] (100ug) and [LC424603] (20ug) can be purchased separately from OriGene.



Western blot analysis of extracts (35ug) from 9 different cell lines by using anti-SERPINA5 monoclonal antibody.