

## Product datasheet for **TA504458**

### **PALS1 Mouse Monoclonal Antibody [Clone ID: OTI5D10]**

#### **Product data:**

Product Type:	Primary Antibodies
Clone Name:	OTI5D10
Applications:	WB
Recommended Dilution:	WB 1:500~2000
Reactivity:	Human, Mouse, Rat
Host:	Mouse
Isotype:	IgG1
Clonality:	Monoclonal
Immunogen:	Full length human recombinant protein of human MPP5(NP_071919) produced in HEK293T cell.
Formulation:	PBS (pH 7.3) containing 1% BSA, 50% glycerol and 0.02% sodium azide.
Concentration:	0.5 mg/ml
Purification:	Purified from mouse ascites fluids or tissue culture supernatant by affinity chromatography (protein A/G)
Conjugation:	Unconjugated
Storage:	Store at -20°C as received.
Stability:	Stable for 12 months from date of receipt.
Predicted Protein Size:	77.1 kDa
Gene Name:	protein associated with LIN7 1, MAGUK family member
Database Link:	<a href="#">NP_071919</a> <a href="#">Entrez Gene 314259 Rat</a> <a href="#">Entrez Gene 64398 Human</a> <a href="#">Q8N3R9</a>

[View online »](#)

**Background:**

Members of the peripheral membrane-associated guanylate kinase (MAGUK) family function in tumor suppression and receptor clustering by forming multiprotein complexes containing distinct sets of transmembrane, cytoskeletal, and cytoplasmic signaling proteins. All MAGUKs contain a PDZ-SH3-GUK core and are divided into 4 subfamilies, DLG-like (see DLG1; MIM 601014), ZO1-like (see TJP1; MIM 601009), p55-like (see MPP1; MIM 305360), and LIN2-like (see CASK; MIM 300172), based on their size and the presence of additional domains (Tseng et al., 2001 [PubMed 11311936]). MPP5 is a member of the p55-like MAGUK subfamily. [supplied by OMIM]

**Synonyms:**

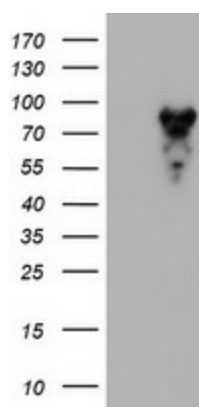
PALS1

**Protein Families:**

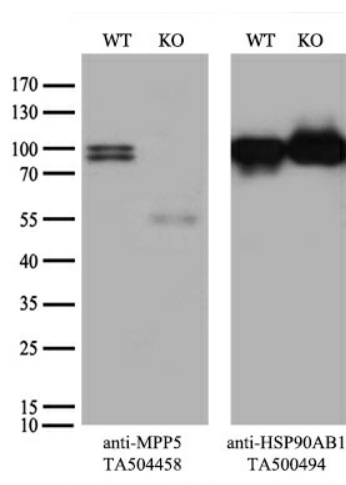
Druggable Genome

**Protein Pathways:**

Tight junction

**Product images:**


HEK293T cells were transfected with the pCMV6-ENTRY control (Left lane) or pCMV6-ENTRY MPP5 [RC224752], Right lane) cDNA for 48 hrs and lysed. Equivalent amounts of cell lysates (5 ug per lane) were separated by SDS-PAGE and immunoblotted with anti-MPP5. Positive lysates [LY411659] (100ug) and [LC411659] (20ug) can be purchased separately from OriGene.



Equivalent amounts of cell lysates (10 ug per lane) of wild-type HeLa cells (WT, Cat# LC810HELA) and MPP5-Knockout HeLa cells (KO, Cat# [LC834761]) were separated by SDS-PAGE and immunoblotted with anti-MPP5 monoclonal antibody TA504458 (1:200). Then the blotted membrane was stripped and reprobed with anti-HSP90 antibody as a loading control.