

## Product datasheet for **TA504451BM**

### **PALS1 Mouse Monoclonal Antibody (HRP conjugated) [Clone ID: OTI2D3]**

#### **Product data:**

Product Type:	Primary Antibodies
Clone Name:	OTI2D3
Applications:	FC, WB
Recommended Dilution:	WB 1:500~2000, FLOW 1:100
Reactivity:	Human, Dog, Rat, Mouse
Host:	Mouse
Isotype:	IgG2a
Clonality:	Monoclonal
Immunogen:	Full length human recombinant protein of human MPP5(NP_071919) produced in HEK293T cell.
Formulation:	PBS (pH 7.3) containing 1% BSA, 50% glycerol.
Concentration:	0.5 mg/ml
Purification:	Purified from mouse ascites fluids or tissue culture supernatant by affinity chromatography (protein A/G)
Conjugation:	HRP
Storage:	Store at -20°C as received.
Stability:	Stable for 12 months from date of receipt.
Predicted Protein Size:	77.1 kDa
Gene Name:	protein associated with LIN7 1, MAGUK family member
Database Link:	<a href="#">NP_071919</a> <a href="#">Entrez Gene 314259 Rat</a> <a href="#">Entrez Gene 490740 Dog</a> <a href="#">Entrez Gene 64398 Human</a> <a href="#">Q8N3R9</a>



[View online »](#)

**Background:**

This gene encodes a member of the p55-like subfamily of the membrane-associated guanylate kinase (MAGUK) gene superfamily. The encoded protein participates in the polarization of differentiating cells, has been shown to regulate myelinating Schwann cells (PMID: 20237282), and is one of the components of the Crumbs complex in the retina. Mice which express lower levels of the orthologous protein have retinal degeneration and impaired vision (PMID: 22114289). Multiple transcript variants encoding different isoforms have been found for this gene. [provided by RefSeq, Feb 2012]

**Synonyms:**

PALS1

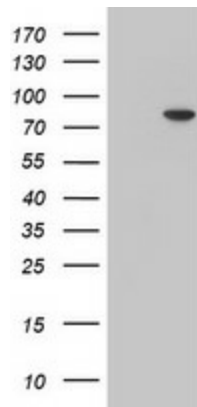
**Protein Families:**

Druggable Genome

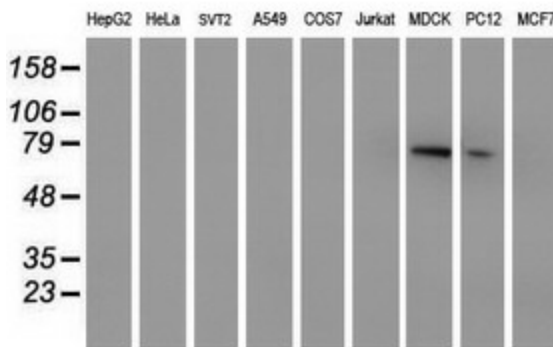
**Protein Pathways:**

Tight junction

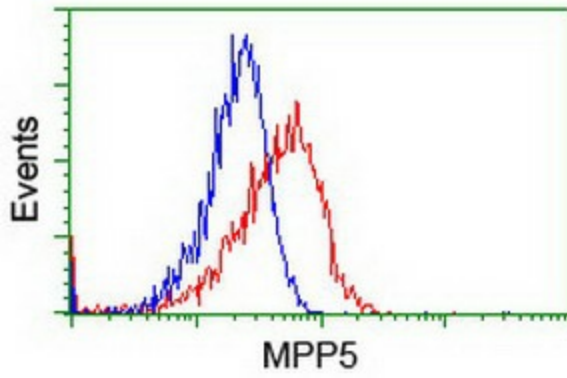
**Product images:**



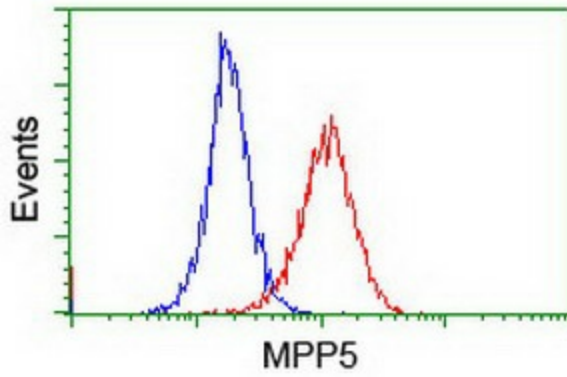
HEK293T cells were transfected with the pCMV6-ENTRY control (Cat# [PS100001], Left lane) or pCMV6-ENTRY MPP5 (Cat# [RC224752], Right lane) cDNA for 48 hrs and lysed. Equivalent amounts of cell lysates (5 ug per lane) were separated by SDS-PAGE and immunoblotted with anti-MPP5 (Cat# [TA504451]). Positive lysates [LY411659] (100ug) and [LC411659] (20ug) can be purchased separately from OriGene.



Western blot analysis of extracts (35ug) from 9 different cell lines by using anti-MPP5 monoclonal antibody (HepG2: human; HeLa: human; SVT2: mouse; A549: human; COS7: monkey; Jurkat: human; MDCK: canine; PC12: rat; MCF7: human).



Flow cytometric Analysis of HeLa cells, using anti-MPP5 antibody ([TA504451]), (Red), compared to a nonspecific negative control antibody, (Blue).



Flow cytometric Analysis of Jurkat cells, using anti-MPP5 antibody ([TA504451]), (Red), compared to a nonspecific negative control antibody, (Blue).