

## Product datasheet for **TA504449S**

### **PDLIM5 Mouse Monoclonal Antibody [Clone ID: OTI1A11]**

#### **Product data:**

Product Type:	Primary Antibodies
Clone Name:	OTI1A11
Applications:	FC, WB
Recommended Dilution:	WB 1:2000, FLOW 1:100
Reactivity:	Human, Mouse, Rat
Host:	Mouse
Isotype:	IgG2a
Clonality:	Monoclonal
Immunogen:	Full length human recombinant protein of human PDLIM5(NP_006448) produced in HEK293T cell.
Formulation:	PBS (pH 7.3) containing 1% BSA, 50% glycerol and 0.02% sodium azide.
Concentration:	3.37 mg/ml
Purification:	Purified from mouse ascites fluids or tissue culture supernatant by affinity chromatography (protein A/G)
Conjugation:	Unconjugated
Storage:	Store at -20°C as received.
Stability:	Stable for 12 months from date of receipt.
Predicted Protein Size:	63.8 kDa
Gene Name:	PDZ and LIM domain 5
Database Link:	<a href="#">NP_006448</a> <a href="#">Entrez Gene 56376 Mouse</a> <a href="#">Entrez Gene 64353 Rat</a> <a href="#">Entrez Gene 10611 Human</a> <a href="#">Q96HC4</a>



[View online »](#)

**Background:**

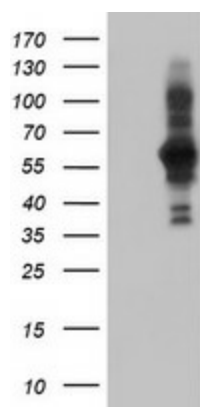
The protein encoded by this gene is a LIM domain protein. LIM domains are cysteine-rich double zinc fingers composed of 50 to 60 amino acids that are involved in protein-protein interactions. LIM domain-containing proteins are scaffolds for the formation of multiprotein complexes. The proteins are involved in cytoskeleton organization, cell lineage specification, organ development, and oncogenesis. The encoded protein is also a member of the Enigma class of proteins, a family of proteins that possess a 100-amino acid PDZ domain in the N terminus and 1 to 3 LIM domains in the C terminus. Multiple transcript variants encoding different isoforms have been found for this gene, although not all of them have been fully characterized. [provided by RefSeq]

**Synonyms:**

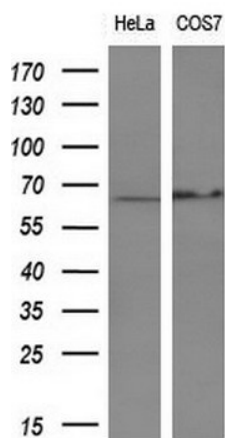
ENH; ENH1; L9; LIM

**Protein Families:**

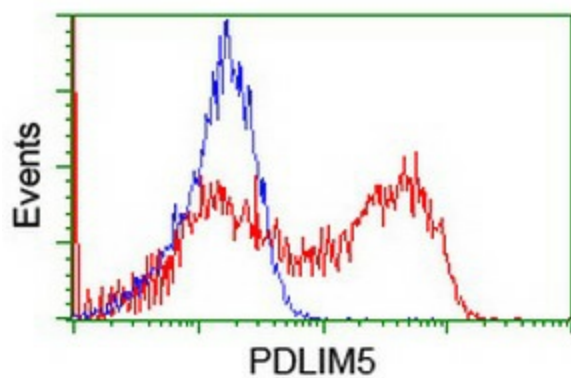
Druggable Genome

**Product images:**


HEK293T cells were transfected with the pCMV6-ENTRY control (Cat# [PS100001], Left lane) or pCMV6-ENTRY PDLIM5 (Cat# [RC200592], Right lane) cDNA for 48 hrs and lysed. Equivalent amounts of cell lysates (5 ug per lane) were separated by SDS-PAGE and immunoblotted with anti-PDLIM5 (Cat# [TA504449]). Positive lysates [LY416641] (100ug) and [LC416641] (20ug) can be purchased separately from OriGene.



Western blot analysis of extracts (10ug) from 2 different cell lines by using anti-PDLIM5 monoclonal antibody (1:200).



HEK293T cells transfected with either [RC200592] overexpress plasmid (Red) or empty vector control plasmid (Blue) were immunostained by anti-PDLIM5 antibody ([TA504449]), and then analyzed by flow cytometry.