

## Product datasheet for **TA504430M**

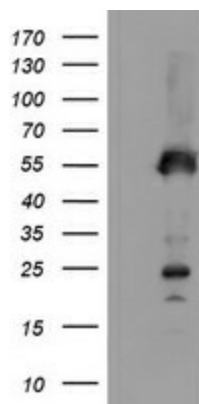
### **SCHIP1 Mouse Monoclonal Antibody [Clone ID: OTI2A11]**

#### **Product data:**

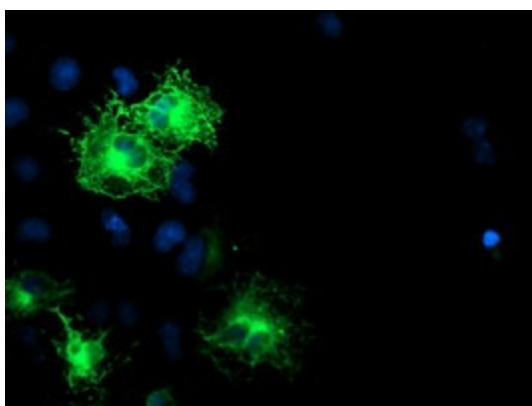
Product Type:	Primary Antibodies
Clone Name:	OTI2A11
Applications:	IF, WB
Recommended Dilution:	WB 1:2000, IF 1:100
Reactivity:	Human, Mouse
Host:	Mouse
Isotype:	IgG1
Clonality:	Monoclonal
Immunogen:	Full length human recombinant protein of human SCHIP1(NP_055390) produced in HEK293T cell.
Formulation:	PBS (pH 7.3) containing 1% BSA, 50% glycerol and 0.02% sodium azide.
Concentration:	0.59 mg/ml
Purification:	Purified from mouse ascites fluids or tissue culture supernatant by affinity chromatography (protein A/G)
Conjugation:	Unconjugated
Storage:	Store at -20°C as received.
Stability:	Stable for 12 months from date of receipt.
Predicted Protein Size:	53.3 kDa
Gene Name:	schwannomin interacting protein 1
Database Link:	<a href="#">NP_055390</a> <a href="#">Entrez Gene 30953 Mouse</a> <a href="#">Entrez Gene 29970 Human</a> <a href="#">P0DPB3</a>
Synonyms:	SCHIP-1

[View online »](#)

## Product images:



HEK293T cells were transfected with the pCMV6-ENTRY control (Left lane) or pCMV6-ENTRY SCHIP1 ([RC206269], Right lane) cDNA for 48 hrs and lysed. Equivalent amounts of cell lysates (5 ug per lane) were separated by SDS-PAGE and immunoblotted with anti-SCHIP1. Positive lysates [LY415194] (100ug) and [LC415194] (20ug) can be purchased separately from OriGene.



Anti-SCHIP1 mouse monoclonal antibody ([TA504430]) immunofluorescent staining of COS7 cells transiently transfected by pCMV6-ENTRY SCHIP1 ([RC206269]).