

## Product datasheet for **TA504425S**

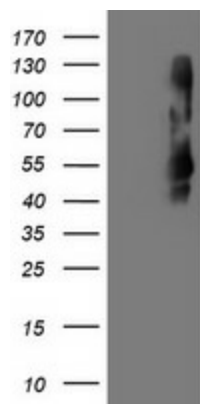
### TMEFF2 Mouse Monoclonal Antibody [Clone ID: OTI1B4]

#### Product data:

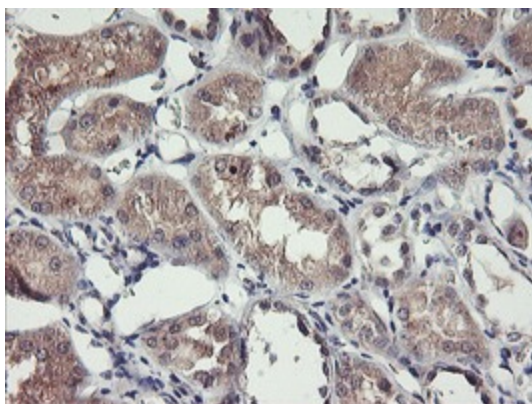
|                         |   |
|-------------------------|---|
| Product Type:           | Primary Antibodies  |
| Clone Name:             | OTI1B4  |
| Applications:           | IHC, WB   |
| Recommended Dilution:   | WB 1:2000, IHC 1:150  |
| Reactivity:             | Human, Mouse  |
| Host:                   | Mouse   |
| Isotype:                | IgG2a   |
| Clonality:              | Monoclonal  |
| Immunogen:              | Full length human recombinant protein of human TMEFF2(NP_057276) produced in HEK293T cell.                |
| Formulation:            | PBS (pH 7.3) containing 1% BSA, 50% glycerol and 0.02% sodium azide.                                      |
| Concentration:          | 0.63 mg/ml  |
| Purification:           | Purified from mouse ascites fluids or tissue culture supernatant by affinity chromatography (protein A/G) |
| Conjugation:            | Unconjugated  |
| Storage:                | Store at -20°C as received.   |
| Stability:              | Stable for 12 months from date of receipt.  |
| Predicted Protein Size: | 41.2 kDa  |
| Gene Name:              | transmembrane protein with EGF like and two follistatin like domains 2                                    |
| Database Link:          | <a href="#">NP_057276</a><br><a href="#">Entrez Gene 23671 Human</a><br><a href="#">Q9UIK5</a>            |
| Synonyms:               | CT120.2; HPP1; TENB2; TPEF; TR; TR-2  |
| Protein Families:       | Transmembrane   |



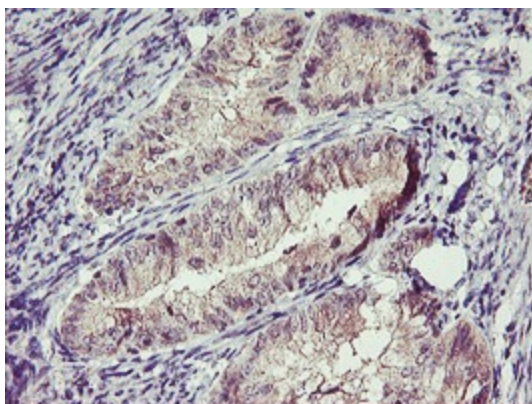
[View online »](#)

**Product images:**

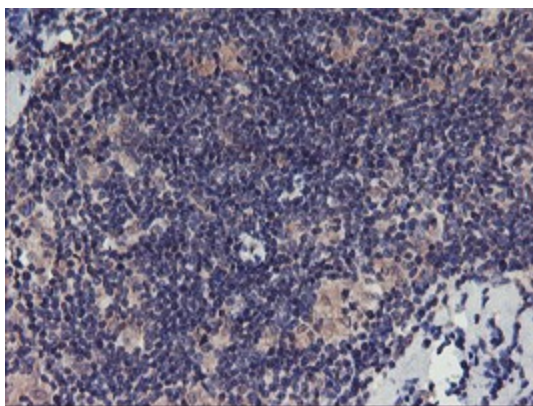
HEK293T cells were transfected with the pCMV6-ENTRY control (Left lane) or pCMV6-ENTRY TMEFF2 ([RC203736], Right lane) cDNA for 48 hrs and lysed. Equivalent amounts of cell lysates (5 ug per lane) were separated by SDS-PAGE and immunoblotted with anti-TMEFF2. Positive lysates [LY402517] (100ug) and [LC402517] (20ug) can be purchased separately from OriGene.



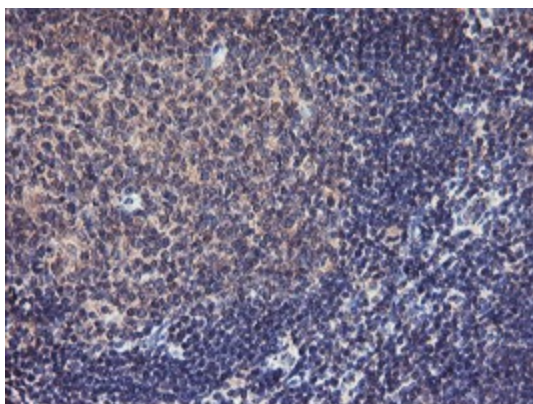
Immunohistochemical staining of paraffin-embedded Human Kidney tissue within the normal limits using anti-TMEFF2 mouse monoclonal antibody. (Heat-induced epitope retrieval by 10mM citric buffer, pH6.0, 100°C for 10min, [TA504425])



Immunohistochemical staining of paraffin-embedded Adenocarcinoma of Human endometrium tissue using anti-TMEFF2 mouse monoclonal antibody. (Heat-induced epitope retrieval by 10mM citric buffer, pH6.0, 100°C for 10min, [TA504425])



Immunohistochemical staining of paraffin-embedded Human lymphoma tissue using anti-TMEFF2 mouse monoclonal antibody. (Heat-induced epitope retrieval by 10mM citric buffer, pH6.0, 100°C for 10min, [TA504425])



Immunohistochemical staining of paraffin-embedded Human tonsil within the normal limits using anti-TMEFF2 mouse monoclonal antibody. (Heat-induced epitope retrieval by 10mM citric buffer, pH6.0, 100°C for 10min, [TA504425])