

Product datasheet for **TA504424M**

SPG7 Mouse Monoclonal Antibody [Clone ID: OTI1C1]

Product data:

Product Type:	Primary Antibodies
Clone Name:	OTI1C1
Applications:	FC, IF, WB
Recommended Dilution:	WB 1:500~2000, IF 1:100, FLOW 1:100
Reactivity:	Human, Dog, Rat, Monkey, Mouse
Host:	Mouse
Isotype:	IgG1
Clonality:	Monoclonal
Immunogen:	Human recombinant protein fragment corresponding to amino acids 300-573 of human SPG7(NP_003110) produced in E.coli.
Formulation:	PBS (pH 7.3) containing 1% BSA, 50% glycerol and 0.02% sodium azide.
Concentration:	1 mg/ml
Purification:	Purified from mouse ascites fluids or tissue culture supernatant by affinity chromatography (protein A/G)
Conjugation:	Unconjugated
Storage:	Store at -20°C as received.
Stability:	Stable for 12 months from date of receipt.
Predicted Protein Size:	88.1 kDa
Gene Name:	SPG7 matrix AAA peptidase subunit, paraplegin
Database Link:	NP_003110 Entrez Gene 234847 MouseEntrez Gene 353231 RatEntrez Gene 489657 DogEntrez Gene 699488 MonkeyEntrez Gene 6687 Human Q9UQ90


[View online »](#)

Background:

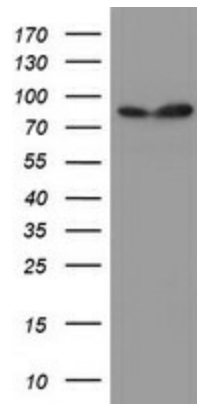
This gene encodes a nuclear-encoded mitochondrial metalloprotease protein that is a member of the AAA (ATPases associated with a variety of cellular activities) protein family. Members of this protein family share an ATPase domain and have roles in diverse cellular processes including membrane trafficking, intracellular motility, organelle biogenesis, protein folding, and proteolysis. Two transcript variants encoding distinct isoforms have been identified for this gene. Mutations associated with this gene cause autosomal recessive spastic paraplegia 7. [provided by RefSeq]

Synonyms:

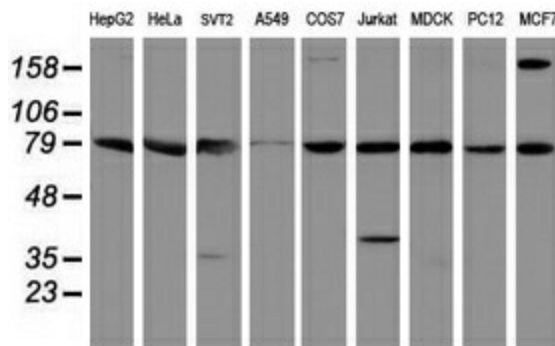
CAR; CMAR; PGN; SPG5C

Protein Families:

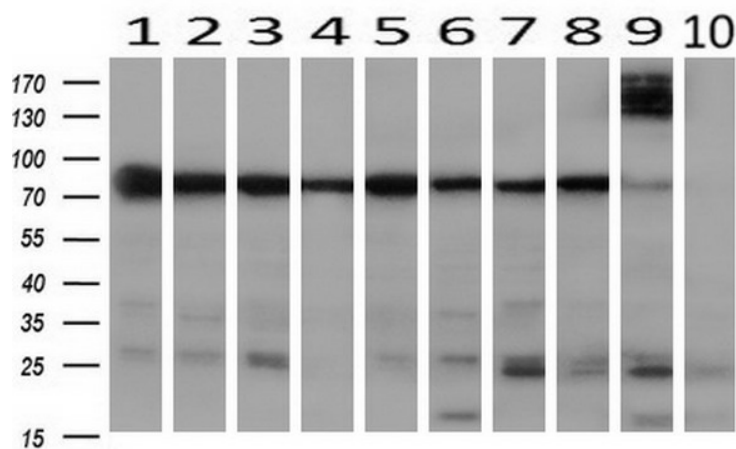
Protease, Transmembrane

Product images:


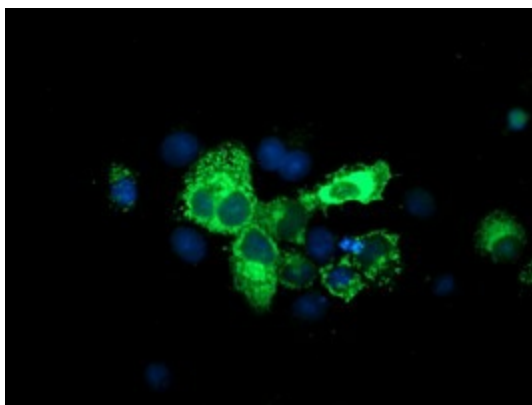
HEK293T cells were transfected with the pCMV6-ENTRY control (Cat# [PS100001], Left lane) or pCMV6-ENTRY SPG7 (Cat# [RC206340], Right lane) cDNA for 48 hrs and lysed. Equivalent amounts of cell lysates (5 ug per lane) were separated by SDS-PAGE and immunoblotted with anti-SPG7 (Cat# [TA504424]). Positive lysates [LY401085] (100ug) and [LC401085] (20ug) can be purchased separately from OriGene.



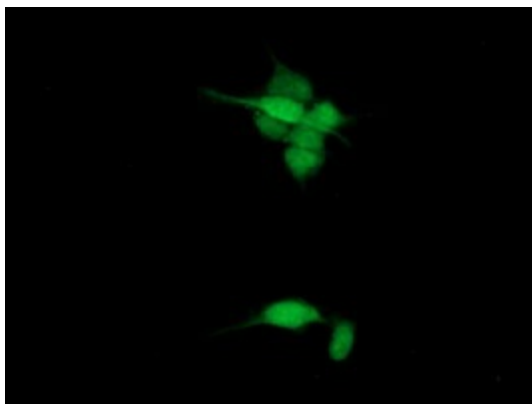
Western blot analysis of extracts (35ug) from 9 different cell lines by using anti-SPG7 monoclonal antibody.



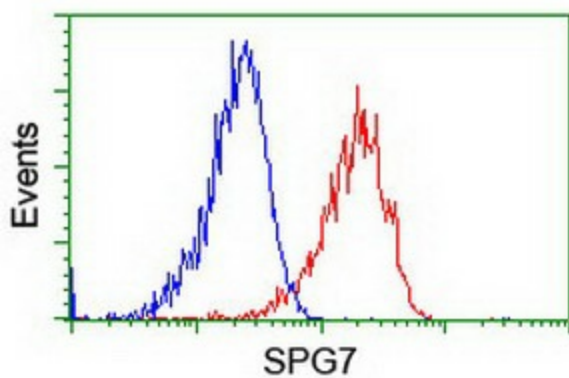
Western blot analysis of extracts (10ug) from 10 Human tissue by using anti-SPG7 monoclonal antibody at 1:200 (1: Testis; 2: Omentum; 3: Uterus; 4: Breast; 5: Brain; 6: Liver; 7: Ovary; 8: Thyroid gland; 9: colon; 10: spleen).



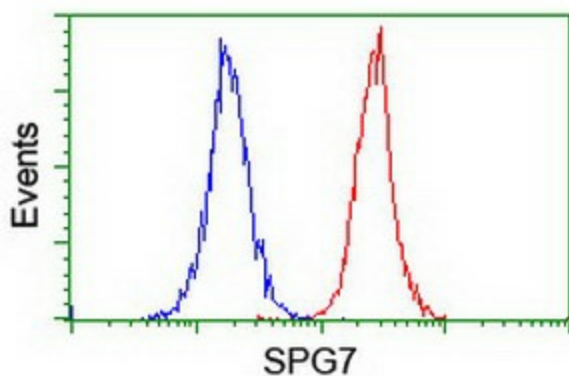
Anti-SPG7 mouse monoclonal antibody ([TA504424]) immunofluorescent staining of COS7 cells transiently transfected by pCMV6-ENTRY SPG7 ([RC206340]).



Immunofluorescent staining of HeLa cells using anti-SPG7 mouse monoclonal antibody ([TA504424]).



Flow cytometric Analysis of HeLa cells, using anti-SPG7 antibody ([TA504424]), (Red), compared to a nonspecific negative control antibody, (Blue).



Flow cytometric Analysis of Jurkat cells, using anti-SPG7 antibody ([TA504424]), (Red), compared to a nonspecific negative control antibody, (Blue).