

## Product datasheet for **TA504422**

### HLCS Mouse Monoclonal Antibody [Clone ID: OTI1E4]

#### Product data:

Product Type:	Primary Antibodies
Clone Name:	OTI1E4
Applications:	FC, IHC, WB
Recommended Dilution:	WB 1:2000, IHC 1:150, FLOW 1:100
Reactivity:	Human
Host:	Mouse
Isotype:	IgG1
Clonality:	Monoclonal
Immunogen:	Full length human recombinant protein of human HLCS(NP_000402) produced in HEK293T cell.
Formulation:	PBS (pH 7.3) containing 1% BSA, 50% glycerol and 0.02% sodium azide.
Concentration:	1 mg/ml
Purification:	Purified from mouse ascites fluids or tissue culture supernatant by affinity chromatography (protein A/G)
Conjugation:	Unconjugated
Storage:	Store at -20°C as received.
Stability:	Stable for 12 months from date of receipt.
Predicted Protein Size:	80.6 kDa
Gene Name:	holocarboxylase synthetase
Database Link:	<a href="#">NP_000402</a> <a href="#">Entrez Gene 3141 Human</a> <a href="#">P50747</a>
Background:	This gene encodes an enzyme that catalyzes the binding of biotin to carboxylases and histones. The protein plays an important role in gluconeogenesis, fatty acid synthesis and branched chain amino acid catabolism. Defects in this gene are the cause of holocarboxylase synthetase deficiency. Multiple alternatively spliced variants, encoding the same protein, have been identified.

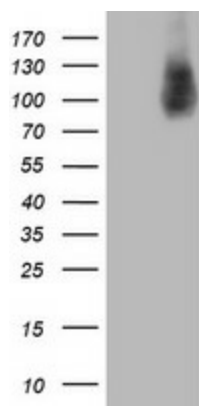


[View online »](#)

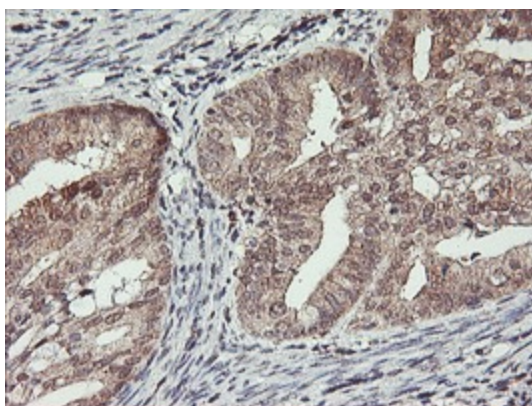
**Synonyms:** HCS

**Protein Pathways:** Biotin metabolism, Metabolic pathways

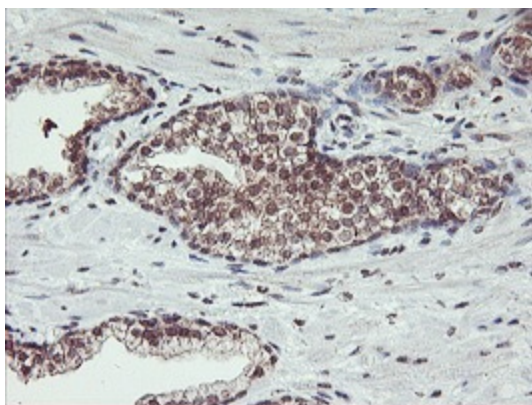
**Product images:**



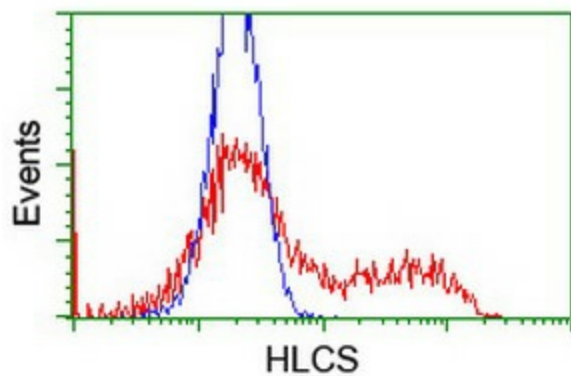
HEK293T cells were transfected with the pCMV6-ENTRY control (Cat# [PS100001], Left lane) or pCMV6-ENTRY HLCS (Cat# [RC209197], Right lane) cDNA for 48 hrs and lysed. Equivalent amounts of cell lysates (5 ug per lane) were separated by SDS-PAGE and immunoblotted with anti-HLCS(Cat# TA504422). Positive lysates [LY400145] (100ug) and [LC400145] (20ug) can be purchased separately from OriGene.



Immunohistochemical staining of paraffin-embedded Adenocarcinoma of Human endometrium tissue using anti-HLCS mouse monoclonal antibody. (Heat-induced epitope retrieval by 10mM citric buffer, pH6.0, 100°C for 10min, TA504422)



Immunohistochemical staining of paraffin-embedded Carcinoma of Human prostate tissue using anti-HLCS mouse monoclonal antibody. (Heat-induced epitope retrieval by 10mM citric buffer, pH6.0, 100°C for 10min, TA504422)



HEK293T cells transfected with either [RC209197] overexpress plasmid (Red) or empty vector control plasmid (Blue) were immunostained by anti-HLCS antibody (TA504422), and then analyzed by flow cytometry.