

Product datasheet for **TA504413M**

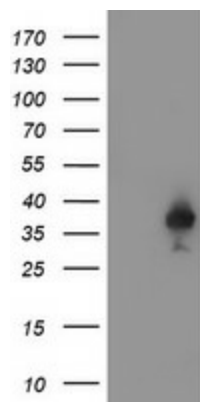
IGFBP2 Mouse Monoclonal Antibody [Clone ID: OTI1A7]

Product data:

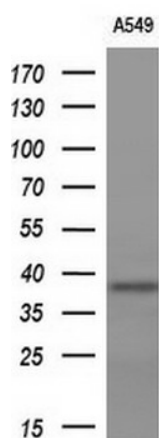
Product Type:	Primary Antibodies
Clone Name:	OTI1A7
Applications:	FC, WB
Recommended Dilution:	WB 1:1000, FLOW 1:100
Reactivity:	Human, Mouse, Rat
Host:	Mouse
Isotype:	IgG1
Clonality:	Monoclonal
Immunogen:	Full length human recombinant protein of human IGFBP2(NP_000588) produced in HEK293T cell.
Formulation:	PBS (pH 7.3) containing 1% BSA, 50% glycerol and 0.02% sodium azide.
Concentration:	1 mg/ml
Purification:	Purified from mouse ascites fluids or tissue culture supernatant by affinity chromatography (protein A/G)
Conjugation:	Unconjugated
Storage:	Store at -20°C as received.
Stability:	Stable for 12 months from date of receipt.
Gene Name:	insulin like growth factor binding protein 2
Database Link:	NP_000588 Entrez Gene 16008 Mouse Entrez Gene 25662 Rat Entrez Gene 3485 Human P18065
Synonyms:	IBP2; IGF-BP53
Protein Families:	Adult stem cells, Druggable Genome, Embryonic stem cells, ES Cell Differentiation/IPS, Secreted Protein


[View online »](#)

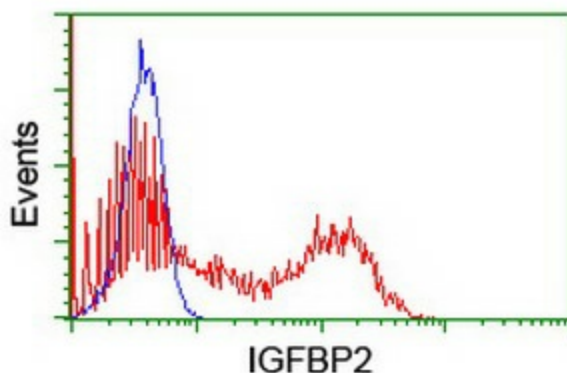
Product images:



HEK293T cells were transfected with the pCMV6-ENTRY control (Left lane) or pCMV6-ENTRY IGFBP2 ([RC202573], Right lane) cDNA for 48 hrs and lysed. Equivalent amounts of cell lysates (5 ug per lane) were separated by SDS-PAGE and immunoblotted with anti-IGFBP2. Positive lysates [LY424614] (100ug) and [LC424614] (20ug) can be purchased separately from OriGene.



Western blot analysis of extracts (10ug) from 1 cell line by using anti-IGFBP2 monoclonal antibody (1:200).



HEK293T cells transfected with either [RC202573] overexpress plasmid (Red) or empty vector control plasmid (Blue) were immunostained by anti-IGFBP2 antibody ([TA504413]), and then analyzed by flow cytometry.