

## Product datasheet for **TA504411**

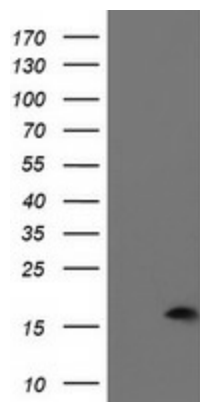
### **PDRG1 Mouse Monoclonal Antibody [Clone ID: OTI4F12]**

#### **Product data:**

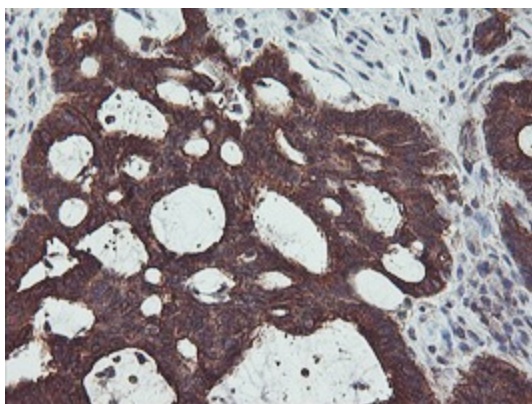
<b>Product Type:</b>	Primary Antibodies
<b>Clone Name:</b>	OTI4F12
<b>Applications:</b>	FC, IHC, WB
<b>Recommended Dilution:</b>	WB 1:500, IHC 1:150, FLOW 1:100
<b>Reactivity:</b>	Human, Mouse, Rat
<b>Host:</b>	Mouse
<b>Isotype:</b>	IgG1
<b>Clonality:</b>	Monoclonal
<b>Immunogen:</b>	Full length human recombinant protein of human PDRG1(NP_110442) produced in HEK293T cell.
<b>Formulation:</b>	PBS (pH 7.3) containing 1% BSA, 50% glycerol and 0.02% sodium azide.
<b>Concentration:</b>	1.22 mg/ml
<b>Purification:</b>	Purified from mouse ascites fluids or tissue culture supernatant by affinity chromatography (protein A/G)
<b>Conjugation:</b>	Unconjugated
<b>Storage:</b>	Store at -20°C as received.
<b>Stability:</b>	Stable for 12 months from date of receipt.
<b>Predicted Protein Size:</b>	15.3 kDa
<b>Gene Name:</b>	p53 and DNA damage regulated 1
<b>Database Link:</b>	<a href="#">NP_110442</a> <a href="#">Entrez Gene 68559 Mouse</a> <a href="#">Entrez Gene 296278 Rat</a> <a href="#">Entrez Gene 81572 Human</a> <a href="#">Q9NUG6</a>
<b>Synonyms:</b>	C20orf126; PDRG



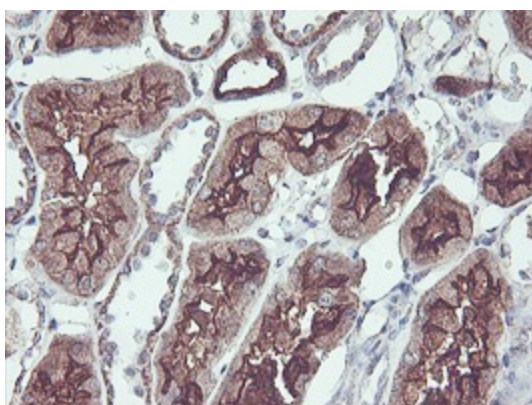
[View online »](#)

**Product images:**

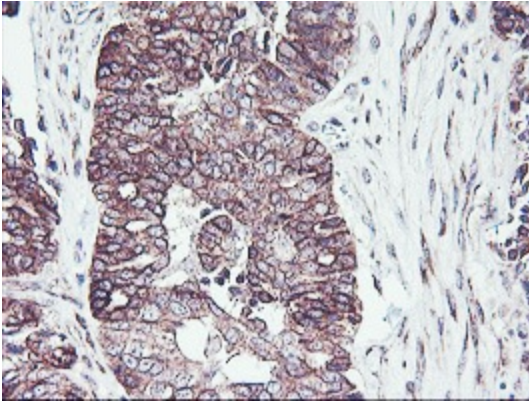
HEK293T cells were transfected with the pCMV6-ENTRY control (Cat# [PS100001], Left lane) or pCMV6-ENTRY PDRG1 (Cat# [RC203661], Right lane) cDNA for 48 hrs and lysed. Equivalent amounts of cell lysates (5 ug per lane) were separated by SDS-PAGE and immunoblotted with anti-PDRG1 (Cat# TA504411). Positive lysates [LY410685] (100ug) and [LC410685] (20ug) can be purchased separately from OriGene.



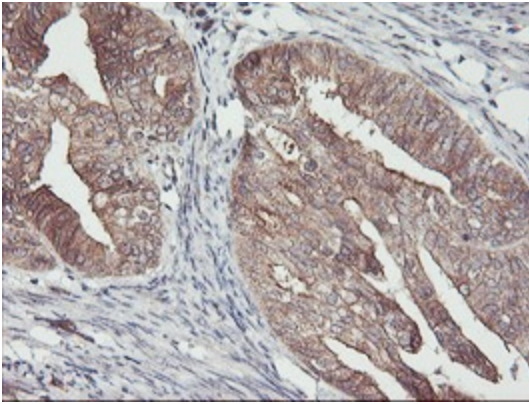
Immunohistochemical staining of paraffin-embedded Adenocarcinoma of Human colon tissue using anti-PDRG1 mouse monoclonal antibody. (Heat-induced epitope retrieval by 10mM citric buffer, pH6.0, 100°C for 10min, TA504411)



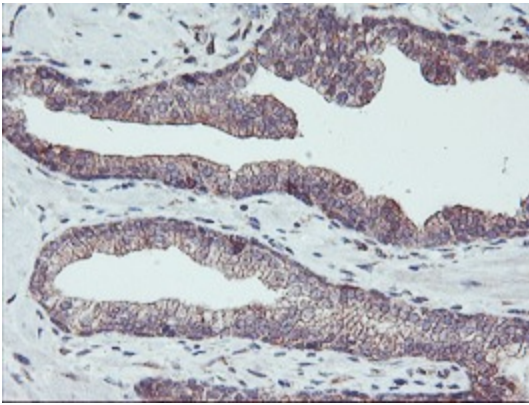
Immunohistochemical staining of paraffin-embedded Human Kidney tissue within the normal limits using anti-PDRG1 mouse monoclonal antibody. (Heat-induced epitope retrieval by 10mM citric buffer, pH6.0, 100°C for 10min, TA504411)



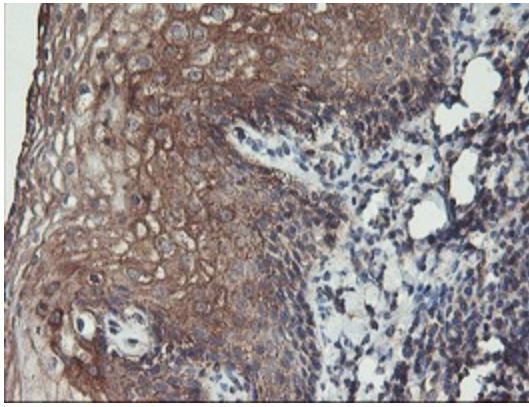
Immunohistochemical staining of paraffin-embedded Adenocarcinoma of Human ovary tissue using anti-PDRG1 mouse monoclonal antibody. (Heat-induced epitope retrieval by 10mM citric buffer, pH6.0, 100°C for 10min, TA504411)



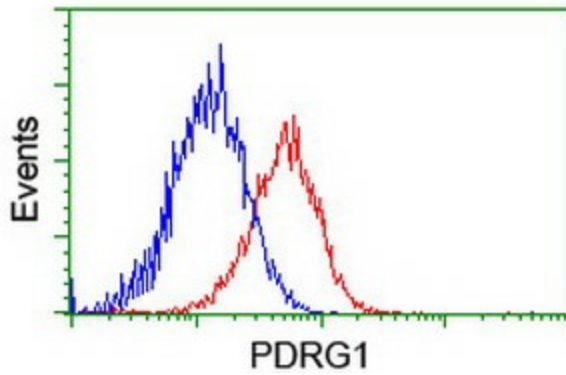
Immunohistochemical staining of paraffin-embedded Adenocarcinoma of Human endometrium tissue using anti-PDRG1 mouse monoclonal antibody. (Heat-induced epitope retrieval by 10mM citric buffer, pH6.0, 100°C for 10min, TA504411)



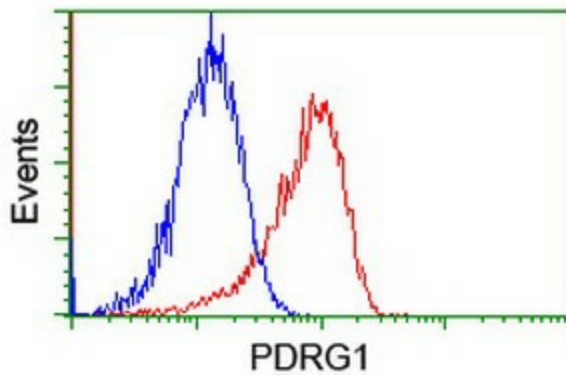
Immunohistochemical staining of paraffin-embedded Carcinoma of Human prostate tissue using anti-PDRG1 mouse monoclonal antibody. (Heat-induced epitope retrieval by 10mM citric buffer, pH6.0, 100°C for 10min, TA504411)



Immunohistochemical staining of paraffin-embedded Human tonsil within the normal limits using anti-PDRG1 mouse monoclonal antibody. (Heat-induced epitope retrieval by 10mM citric buffer, pH6.0, 100°C for 10min, TA504411)



Flow cytometric Analysis of HeLa cells, using anti-PDRG1 antibody (TA504411), (Red), compared to a nonspecific negative control antibody, (Blue).



Flow cytometric Analysis of Jurkat cells, using anti-PDRG1 antibody (TA504411), (Red), compared to a nonspecific negative control antibody, (Blue).