

Product datasheet for **TA504407S**

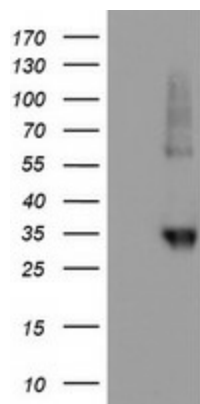
NPTN Mouse Monoclonal Antibody [Clone ID: OTI2A6]

Product data:

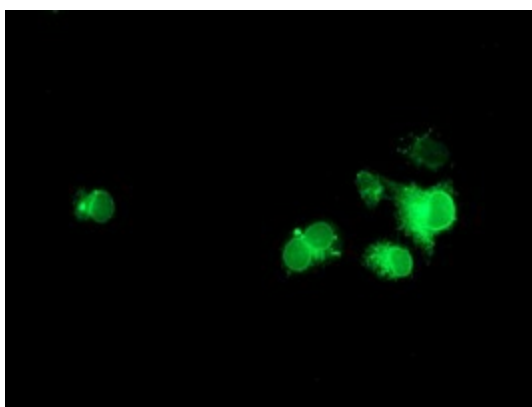
Product Type:	Primary Antibodies
Clone Name:	OTI2A6
Applications:	IF, WB
Recommended Dilution:	WB 1:2000, IF 1:100
Reactivity:	Human, Rat
Host:	Mouse
Isotype:	IgG1
Clonality:	Monoclonal
Immunogen:	Full length human recombinant protein of human NPTN(NP_059429) produced in HEK293T cell.
Formulation:	PBS (pH 7.3) containing 1% BSA, 50% glycerol and 0.02% sodium azide.
Concentration:	0.98 mg/ml
Purification:	Purified from mouse ascites fluids or tissue culture supernatant by affinity chromatography (protein A/G)
Conjugation:	Unconjugated
Storage:	Store at -20°C as received.
Stability:	Stable for 12 months from date of receipt.
Predicted Protein Size:	28.7 kDa
Gene Name:	neuroplastin
Database Link:	NP_059429 Entrez Gene 56064 Rat Entrez Gene 27020 Human Q9Y639
Background:	This gene encodes a type I transmembrane protein belonging to the Ig superfamily. The protein is believed to be involved in cell-cell interactions or cell-substrate interactions. Alternative splicing results in multiple transcript variants. [provided by RefSeq]
Synonyms:	GP55; GP65; np55; np65; SDFR1; SDR1
Protein Families:	Druggable Genome, Transmembrane



[View online »](#)

Product images:

HEK293T cells were transfected with the pCMV6-ENTRY control (Left lane) or pCMV6-ENTRY NPTN ([RC210326], Right lane) cDNA for 48 hrs and lysed. Equivalent amounts of cell lysates (5 ug per lane) were separated by SDS-PAGE and immunoblotted with anti-NPTN. Positive lysates [LY413759] (100ug) and [LC413759] (20ug) can be purchased separately from OriGene.



Anti-NPTN mouse monoclonal antibody ([TA504407]) immunofluorescent staining of COS7 cells transiently transfected by pCMV6-ENTRY NPTN ([RC210326]).