

## Product datasheet for **TA504406AM**

### **PTOP (ACD) Mouse Monoclonal Antibody (Biotin conjugated) [Clone ID: OTI1A2]**

#### **Product data:**

Product Type:	Primary Antibodies
Clone Name:	OTI1A2
Applications:	FC, IF, WB
Recommended Dilution:	WB 1:2000, IF 1:100, FLOW 1:100
Reactivity:	Human
Host:	Mouse
Isotype:	IgG1
Clonality:	Monoclonal
Immunogen:	Full length human recombinant protein of human ACD(NP_001075955) produced in HEK293T cell.
Formulation:	PBS (pH 7.3) containing 1% BSA, 50% glycerol and 0.02% sodium azide.
Concentration:	0.5 mg/ml
Purification:	Purified from mouse ascites fluids or tissue culture supernatant by affinity chromatography (protein A/G)
Conjugation:	Biotin
Storage:	Store at -20°C as received.
Stability:	Stable for 12 months from date of receipt.
Predicted Protein Size:	57.6 kDa
Gene Name:	ACD shelterin complex subunit and telomerase recruitment factor
Database Link:	<a href="#">NP_001075955</a> <a href="#">Entrez Gene 65057 Human</a> <a href="#">Q96AP0</a>



[View online »](#)

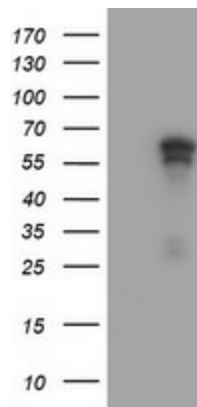
**Background:**

This gene encodes a protein that is involved in telomere function. This protein is one of six core proteins in the telosome/shelterin telomeric complex, which functions to maintain telomere length and to protect telomere ends. Through its interaction with other components, this protein plays a key role in the assembly and stabilization of this complex, and it mediates the access of telomerase to the telomere. Multiple transcript variants encoding different isoforms have been found for this gene. This gene, which is also referred to as TPP1, is distinct from the unrelated TPP1 gene on chromosome 11, which encodes tripeptidyl-peptidase I. [provided by RefSeq]

**Synonyms:**

PIP1; PTOP; TINT1; TPP1

**Product images:**



HEK293T cells were transfected with the pCMV6-ENTRY control (Left lane) or pCMV6-ENTRY ACD ([RC204381], Right lane) cDNA for 48 hrs and lysed. Equivalent amounts of cell lysates (5 ug per lane) were separated by SDS-PAGE and immunoblotted with anti-ACD. Positive lysates [LY421183] (100ug) and [LC421183] (20ug) can be purchased separately from OriGene.

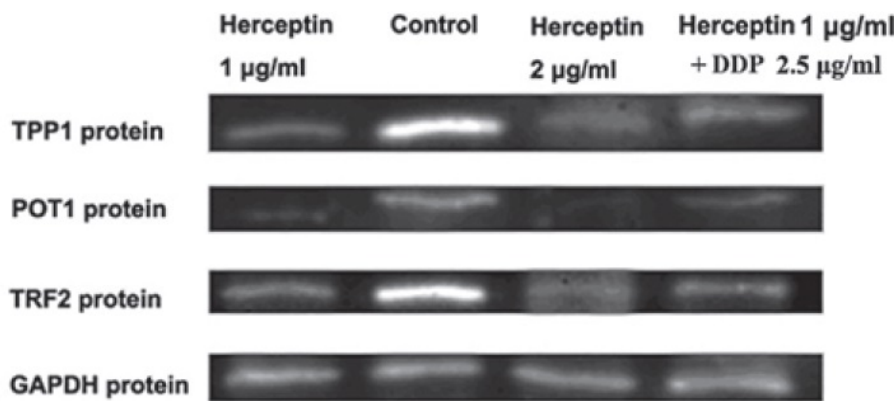
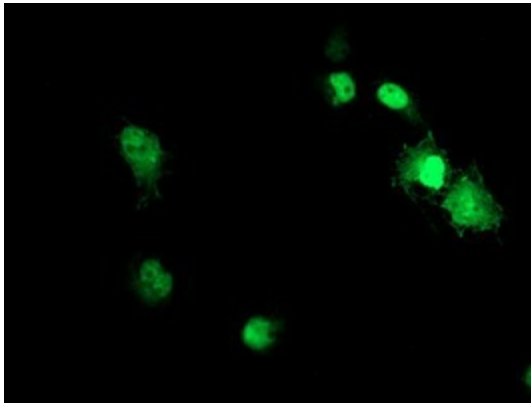
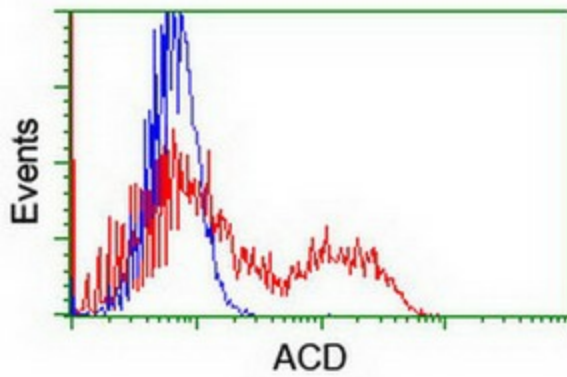


Figure from citation: Western blot analysis of TPP1 (also known as ACD) protein expression by using anti-ACD antibody in NCI-N87 cells. [View Citation](#)



Anti-ACD mouse monoclonal antibody ([TA504406]) immunofluorescent staining of COS7 cells transiently transfected by pCMV6-ENTRY ACD ([RC204381]).



HEK293T cells transfected with either [RC204381] overexpress plasmid (Red) or empty vector control plasmid (Blue) were immunostained by anti-ACD antibody ([TA504406]), and then analyzed by flow cytometry.