

Product datasheet for **TA504404S**

AFG3L2 Mouse Monoclonal Antibody [Clone ID: OTI2D3]

Product data:

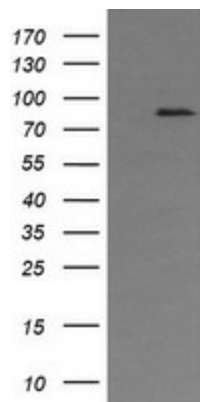
Product Type:	Primary Antibodies
Clone Name:	OTI2D3
Applications:	WB
Recommended Dilution:	WB 1:500
Reactivity:	Human, Mouse, Rat
Host:	Mouse
Isotype:	IgG1
Clonality:	Monoclonal
Immunogen:	Human recombinant protein fragment corresponding to amino acids 1-250 of human AFG3L2(NP_006787) produced in E.coli.
Formulation:	PBS (pH 7.3) containing 1% BSA, 50% glycerol and 0.02% sodium azide.
Concentration:	1 mg/ml
Purification:	Purified from mouse ascites fluids or tissue culture supernatant by affinity chromatography (protein A/G)
Conjugation:	Unconjugated
Storage:	Store at -20°C as received.
Stability:	Stable for 12 months from date of receipt.
Predicted Protein Size:	88.3 kDa
Gene Name:	AFG3 like matrix AAA peptidase subunit 2
Database Link:	NP_006787 Entrez Gene 69597 Mouse Entrez Gene 307350 Rat Entrez Gene 10939 Human Q9Y4W6
Background:	This gene encodes a protein localized in mitochondria and closely related to paraplegin. The paraplegin gene is responsible for an autosomal recessive form of hereditary spastic paraplegia. This gene is a candidate gene for other hereditary spastic paraplegias or neurodegenerative disorders. [provided by RefSeq, Jul 2008]
Synonyms:	SCA28; SPAX5



[View online »](#)

Protein Families: Druggable Genome, Protease, Transmembrane

Product images:



HEK293T cells were transfected with the pCMV6-ENTRY control (Left lane) or pCMV6-ENTRY AFG3L2 ([RC209058], Right lane) cDNA for 48 hrs and lysed. Equivalent amounts of cell lysates (5 ug per lane) were separated by SDS-PAGE and immunoblotted with anti-AFG3L2. Positive lysates [LY416420] (100ug) and [LC416420] (20ug) can be purchased separately from OriGene.