

Product datasheet for **TA504403AM**

MIER2 Mouse Monoclonal Antibody (Biotin conjugated) [Clone ID: OTI3A1]

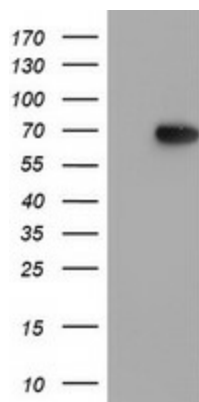
Product data:

Product Type:	Primary Antibodies
Clone Name:	OTI3A1
Applications:	IF, IHC, WB
Recommended Dilution:	WB 1:2000, IHC 1:150, IF 1:100
Reactivity:	Human
Host:	Mouse
Isotype:	IgG1
Clonality:	Monoclonal
Immunogen:	Human recombinant protein fragment corresponding to amino acids 1-296 of human MIER2(NP_060020) produced in E.coli.
Formulation:	PBS (pH 7.3) containing 1% BSA, 50% glycerol and 0.02% sodium azide.
Concentration:	0.5 mg/ml
Purification:	Purified from mouse ascites fluids or tissue culture supernatant by affinity chromatography (protein A/G)
Conjugation:	Biotin
Storage:	Store at -20°C as received.
Stability:	Stable for 12 months from date of receipt.
Predicted Protein Size:	59.8 kDa
Gene Name:	MIER family member 2
Database Link:	NP_060020 Entrez Gene 54531 Human Q8N344
Synonyms:	KIAA1193; Mi-er2

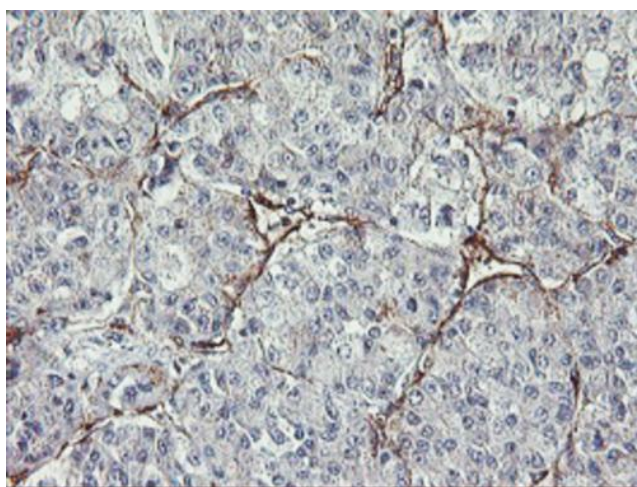


[View online »](#)

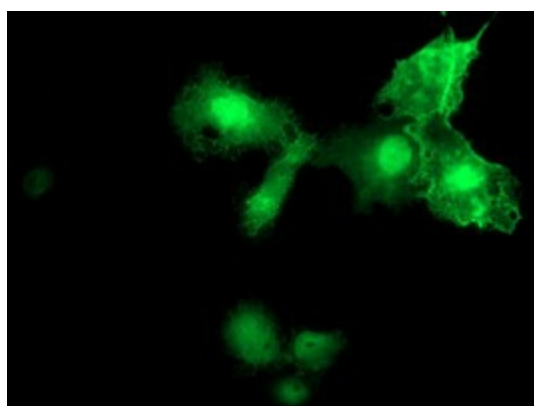
Product images:



HEK293T cells were transfected with the pCMV6-ENTRY control (Left lane) or pCMV6-ENTRY MIER2 ([RC207065], Right lane) cDNA for 48 hrs and lysed. Equivalent amounts of cell lysates (5 ug per lane) were separated by SDS-PAGE and immunoblotted with anti-MIER2. Positive lysates [LY413697] (100ug) and [LC413697] (20ug) can be purchased separately from OriGene.



Immunohistochemical staining of paraffin-embedded Carcinoma of Human liver tissue using anti-MIER2 mouse monoclonal antibody. Heat-induced epitope retrieval by EDTA solution buffer pH 8.0 at 120°C for 3 min.



Anti-MIER2 mouse monoclonal antibody ([TA504403]) immunofluorescent staining of COS7 cells transiently transfected by pCMV6-ENTRY MIER2 ([RC207065]).