

Product datasheet for **TA504384S**

RUVBL2 Mouse Monoclonal Antibody [Clone ID: OTI2B9]

Product data:

Product Type:	Primary Antibodies
Clone Name:	OTI2B9
Applications:	FC, WB
Recommended Dilution:	WB 1:1000~2000, FLOW 1:100
Reactivity:	Human, Dog, Rat, Monkey, Mouse
Host:	Mouse
Isotype:	IgG1
Clonality:	Monoclonal
Immunogen:	Human recombinant protein fragment corresponding to amino acids 113-370 of human RUVBL2(NP_006657) produced in E.coli.
Formulation:	PBS (pH 7.3) containing 1% BSA, 50% glycerol and 0.02% sodium azide.
Concentration:	1 mg/ml
Purification:	Purified from mouse ascites fluids or tissue culture supernatant by affinity chromatography (protein A/G)
Conjugation:	Unconjugated
Storage:	Store at -20°C as received.
Stability:	Stable for 12 months from date of receipt.
Predicted Protein Size:	51 kDa
Gene Name:	RuvB like AAA ATPase 2
Database Link:	NP_006657 Entrez Gene 20174 Mouse Entrez Gene 292907 Rat Entrez Gene 476418 Dog Entrez Gene 100428794 Monkey Entrez Gene 10856 Human Q9Y230



[View online »](#)

Background:

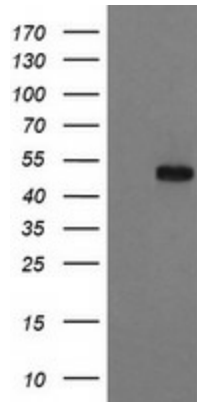
This gene encodes the second human homologue of the bacterial RuvB gene. Bacterial RuvB protein is a DNA helicase essential for homologous recombination and DNA double-strand break repair. Functional analysis showed that this gene product has both ATPase and DNA helicase activities. This gene is physically linked to the CGB/LHB gene cluster on chromosome 19q13.3, and is very close (55 nt) to the LHB gene, in the opposite orientation. [provided by RefSeq, Jul 2008]

Synonyms:

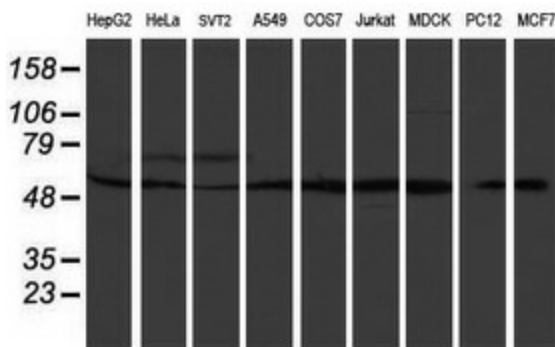
CGI-46; ECP51; INO80J; REPTIN; RVB2; TIH2; TIP48; TIP49B

Protein Families:

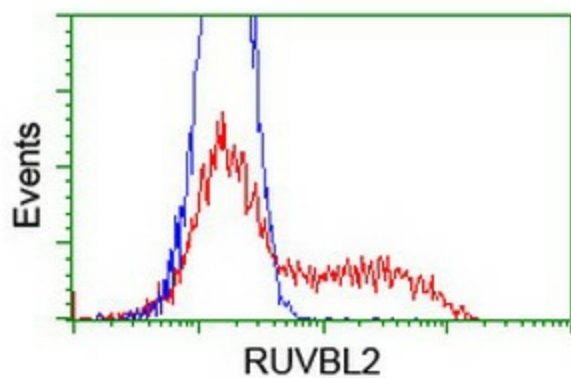
Transcription Factors

Product images:


HEK293T cells were transfected with the pCMV6-ENTRY control (Left lane) or pCMV6-ENTRY RUVBL2 ([RC200933], Right lane) cDNA for 48 hrs and lysed. Equivalent amounts of cell lysates (5 ug per lane) were separated by SDS-PAGE and immunoblotted with anti-RUVBL2. Positive lysates [LY401993] (100ug) and [LC401993] (20ug) can be purchased separately from OriGene.



Western blot analysis of extracts (35ug) from 9 different cell lines by using anti-RUVBL2 monoclonal antibody (HepG2: human; HeLa: human; SVT2: mouse; A549: human; COS7: monkey; Jurkat: human; MDCK: canine; PC12: rat; MCF7: human).



HEK293T cells transfected with either [RC200933] overexpress plasmid (Red) or empty vector control plasmid (Blue) were immunostained by anti-RUVBL2 antibody ([TA504384]), and then analyzed by flow cytometry.