

Product datasheet for **TA504383**

Proteasome 20S beta 7 (PSMB7) Mouse Monoclonal Antibody [Clone ID: OTI4G9]

Product data:

Product Type:	Primary Antibodies
Clone Name:	OTI4G9
Applications:	IF, WB
Recommended Dilution:	WB 1:1000~2000, IF 1:100
Reactivity:	Human, Dog, Rat, Monkey, Mouse
Host:	Mouse
Isotype:	IgG1
Clonality:	Monoclonal
Immunogen:	Human recombinant protein fragment corresponding to amino acids 58-277 of human PSMB7(NP_002790) produced in E.coli.
Formulation:	PBS (pH 7.3) containing 1% BSA, 50% glycerol and 0.02% sodium azide.
Concentration:	0.59 mg/ml
Purification:	Purified from mouse ascites fluids or tissue culture supernatant by affinity chromatography (protein A/G)
Conjugation:	Unconjugated
Storage:	Store at -20°C as received.
Stability:	Stable for 12 months from date of receipt.
Predicted Protein Size:	29.8 kDa
Gene Name:	proteasome 20S subunit beta 7
Database Link:	NP_002790 Entrez Gene 19177 Mouse Entrez Gene 85492 Rat Entrez Gene 100686423 Dog Entrez Gene 694567 Monkey Entrez Gene 5695 Human Q99436



[View online »](#)

Background:

The proteasome is a multicatalytic proteinase complex with a highly ordered ring-shaped 20S core structure. The core structure is composed of 4 rings of 28 non-identical subunits; 2 rings are composed of 7 alpha subunits and 2 rings are composed of 7 beta subunits. Proteasomes are distributed throughout eukaryotic cells at a high concentration and cleave peptides in an ATP/ubiquitin-dependent process in a non-lysosomal pathway. An essential function of a modified proteasome, the immunoproteasome, is the processing of class I MHC peptides. This gene encodes a member of the proteasome B-type family, also known as the T1B family, that is a 20S core beta subunit in the proteasome. Expression of this catalytic subunit is downregulated by gamma interferon and proteolytic processing is required to generate a mature subunit. This subunit is not present in the immunoproteasome and is replaced by catalytic subunit 2i (proteasome beta 10 subunit). [provided by RefSeq]

Synonyms:

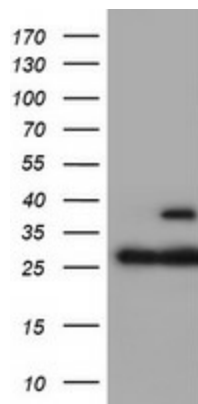
Z

Protein Families:

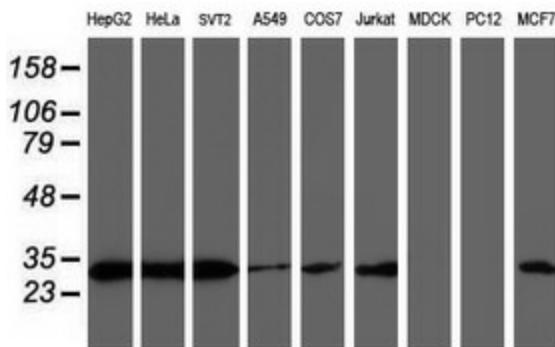
Druggable Genome, Protease

Protein Pathways:

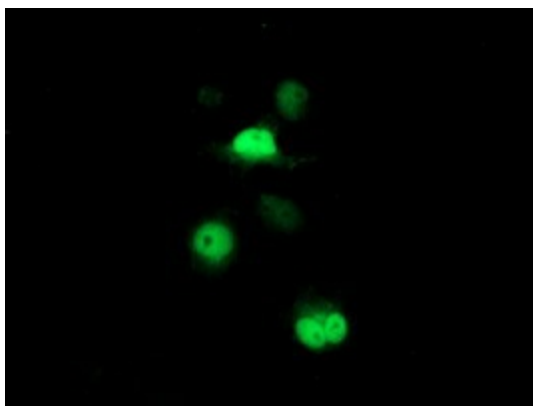
Proteasome

Product images:


HEK293T cells were transfected with the pCMV6-ENTRY control (Left lane) or pCMV6-ENTRY PSMB7 ([RC201799], Right lane) cDNA for 48 hrs and lysed. Equivalent amounts of cell lysates (5 ug per lane) were separated by SDS-PAGE and immunoblotted with anti-PSMB7. Positive lysates [LY400993] (100ug) and [LC400993] (20ug) can be purchased separately from OriGene.



Western blot analysis of extracts (35ug) from 9 different cell lines by using anti-PSMB7 monoclonal antibody.



Anti-PSMB7 mouse monoclonal antibody (TA504383) immunofluorescent staining of COS7 cells transiently transfected by pCMV6-ENTRY PSMB7 ([RC201799]).