

## Product datasheet for **TA504381S**

### SH2D2A Mouse Monoclonal Antibody [Clone ID: OTI1B8]

#### Product data:

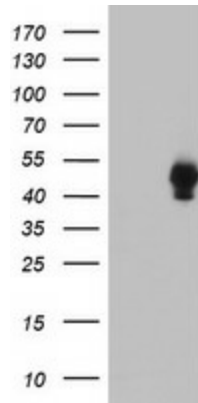
Product Type:	Primary Antibodies
Clone Name:	OTI1B8
Applications:	FC, WB
Recommended Dilution:	WB 1:2000, FLOW 1:100
Reactivity:	Human
Host:	Mouse
Isotype:	IgG1
Clonality:	Monoclonal
Immunogen:	Full length human recombinant protein of human SH2D2A(NP_003966) produced in HEK293T cell.
Formulation:	PBS (pH 7.3) containing 1% BSA, 50% glycerol and 0.02% sodium azide.
Concentration:	1 mg/ml
Purification:	Purified from mouse ascites fluids or tissue culture supernatant by affinity chromatography (protein A/G)
Conjugation:	Unconjugated
Storage:	Store at -20°C as received.
Stability:	Stable for 12 months from date of receipt.
Predicted Protein Size:	42.8 kDa
Gene Name:	SH2 domain containing 2A
Database Link:	<a href="#">NP_003966</a> <a href="#">Entrez Gene 9047 Human</a> <a href="#">Q9NP31</a>
Background:	This gene encodes an adaptor protein thought to function in T-cell signal transduction. A related protein in mouse is responsible for the activation of lymphocyte-specific protein-tyrosine kinase and functions in downstream signaling. Alternative splicing results in multiple transcript variants. [provided by RefSeq]
Synonyms:	F2771; SCAP; TSAD; VRAP



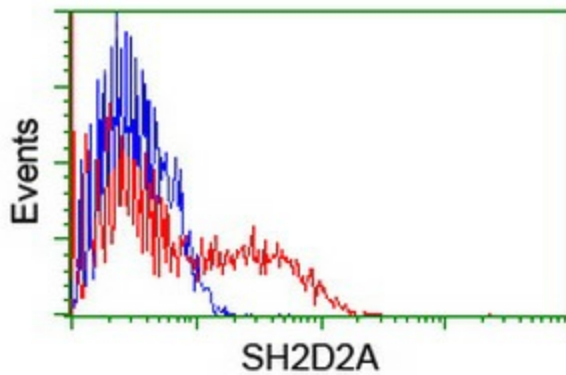
[View online »](#)

Protein Pathways: VEGF signaling pathway

### Product images:



HEK293T cells were transfected with the pCMV6-ENTRY control (Left lane) or pCMV6-ENTRY SH2D2A ([RC204162], Right lane) cDNA for 48 hrs and lysed. Equivalent amounts of cell lysates (5 ug per lane) were separated by SDS-PAGE and immunoblotted with anti-SH2D2A. Positive lysates [LY418322] (100ug) and [LC418322] (20ug) can be purchased separately from OriGene.



HEK293T cells transfected with either [RC204162] overexpress plasmid (Red) or empty vector control plasmid (Blue) were immunostained by anti-SH2D2A antibody ([TA504381]), and then analyzed by flow cytometry.