

## Product datasheet for **TA504373S**

### **FMRP (FMR1) Mouse Monoclonal Antibody [Clone ID: OTI5B9]**

#### **Product data:**

<b>Product Type:</b>	Primary Antibodies
<b>Clone Name:</b>	OTI5B9
<b>Applications:</b>	FC, IF, IHC, WB
<b>Recommended Dilution:</b>	WB 1:500, IHC 1:150, IF 1:100, FLOW 1:100
<b>Reactivity:</b>	Human, Mouse, Rat
<b>Host:</b>	Mouse
<b>Isotype:</b>	IgG1
<b>Clonality:</b>	Monoclonal
<b>Immunogen:</b>	Human recombinant protein fragment corresponding to amino acids 36-279 of human FMR1(NP_002015) produced in E.coli.
<b>Formulation:</b>	PBS (pH 7.3) containing 1% BSA, 50% glycerol and 0.02% sodium azide.
<b>Concentration:</b>	3.08 mg/ml
<b>Purification:</b>	Purified from mouse ascites fluids or tissue culture supernatant by affinity chromatography (protein A/G)
<b>Conjugation:</b>	Unconjugated
<b>Storage:</b>	Store at -20°C as received.
<b>Stability:</b>	Stable for 12 months from date of receipt.
<b>Predicted Protein Size:</b>	71 kDa
<b>Gene Name:</b>	FMRP translational regulator 1
<b>Database Link:</b>	<a href="#">NP_002015</a> <a href="#">Entrez Gene 14265 Mouse</a> <a href="#">Entrez Gene 24948 Rat</a> <a href="#">Entrez Gene 2332 Human</a> <a href="#">Q06787</a>



[View online »](#)

**Background:**

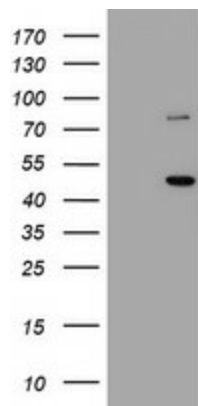
The protein encoded by this gene binds RNA and is associated with polysomes. The encoded protein may be involved in mRNA trafficking from the nucleus to the cytoplasm. A trinucleotide repeat (CGG) in the 5' UTR is normally found at 6-53 copies, but an expansion to 55-230 repeats is the cause of fragile X syndrome. Expansion of the trinucleotide repeat may also cause one form of premature ovarian failure (POF1). Multiple alternatively spliced transcript variants that encode different protein isoforms and which are located in different cellular locations have been described for this gene. [provided by RefSeq]

**Synonyms:**

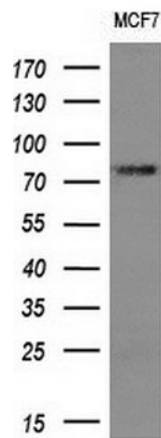
FMRP; FRAXA; POF; POF1; POFX

**Protein Families:**

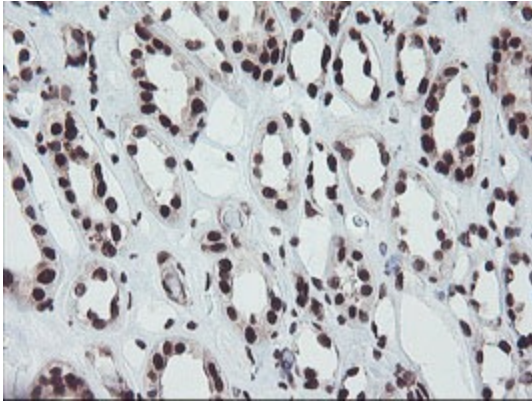
Druggable Genome

**Product images:**


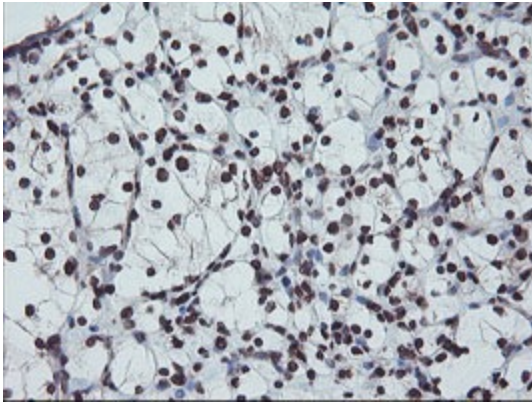
HEK293T cells were transfected with the pCMV6-ENTRY control (Left lane) or pCMV6-ENTRY FMR1 [RC222699], Right lane) cDNA for 48 hrs and lysed. Equivalent amounts of cell lysates (5 ug per lane) were separated by SDS-PAGE and immunoblotted with anti-FMR1. Positive lysates [LY419580] (100ug) and [LC419580] (20ug) can be purchased separately from OriGene.



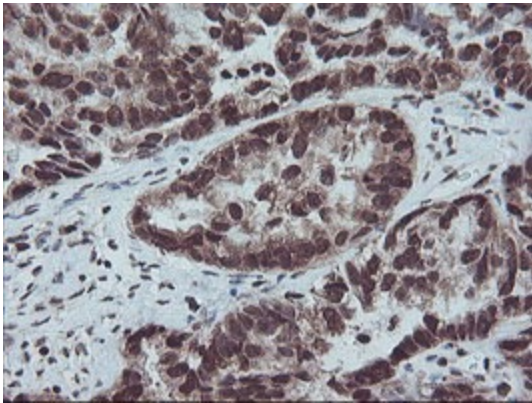
Western blot analysis of extracts (10ug) from 1 cell line by using anti-FMR1 monoclonal antibody (1:200).



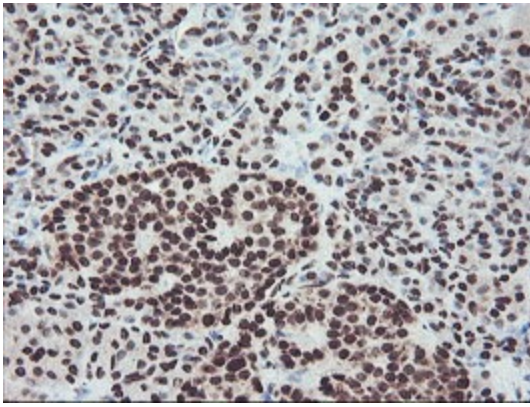
Immunohistochemical staining of paraffin-embedded Human Kidney tissue within the normal limits using anti-FMR1 mouse monoclonal antibody. (Heat-induced epitope retrieval by 10mM citric buffer, pH6.0, 100°C for 10min, [TA504373])



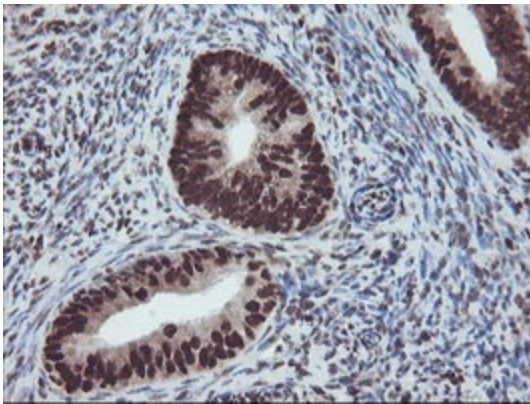
Immunohistochemical staining of paraffin-embedded Carcinoma of Human kidney tissue using anti-FMR1 mouse monoclonal antibody. (Heat-induced epitope retrieval by 10mM citric buffer, pH6.0, 100°C for 10min, [TA504373])



Immunohistochemical staining of paraffin-embedded Adenocarcinoma of Human ovary tissue using anti-FMR1 mouse monoclonal antibody. (Heat-induced epitope retrieval by 10mM citric buffer, pH6.0, 100°C for 10min, [TA504373])



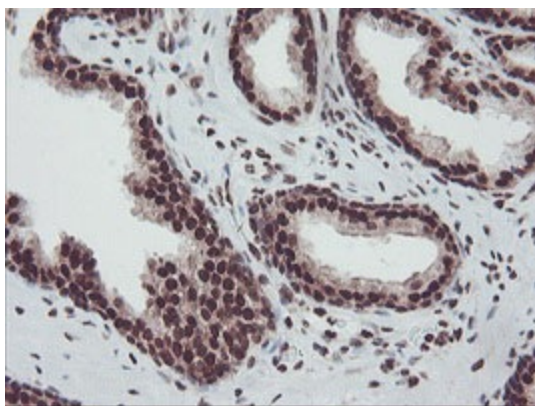
Immunohistochemical staining of paraffin-embedded Human pancreas tissue within the normal limits using anti-FMR1 mouse monoclonal antibody. (Heat-induced epitope retrieval by 10mM citric buffer, pH6.0, 100°C for 10min, [TA504373])



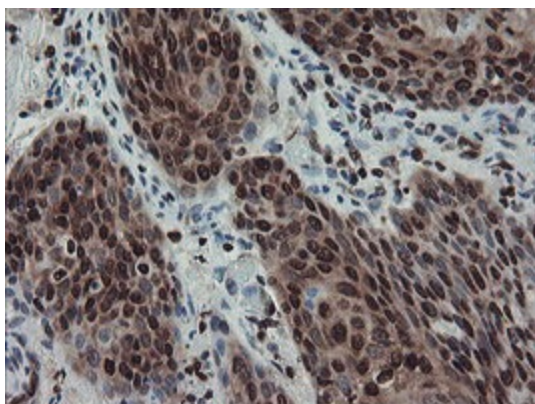
Immunohistochemical staining of paraffin-embedded Adenocarcinoma of Human endometrium tissue using anti-FMR1 mouse monoclonal antibody. (Heat-induced epitope retrieval by 10mM citric buffer, pH6.0, 100°C for 10min, [TA504373])



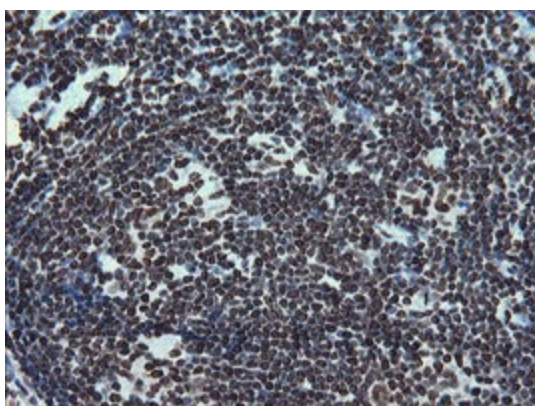
Immunohistochemical staining of paraffin-embedded Human prostate tissue within the normal limits using anti-FMR1 mouse monoclonal antibody. (Heat-induced epitope retrieval by 10mM citric buffer, pH6.0, 100°C for 10min, [TA504373])



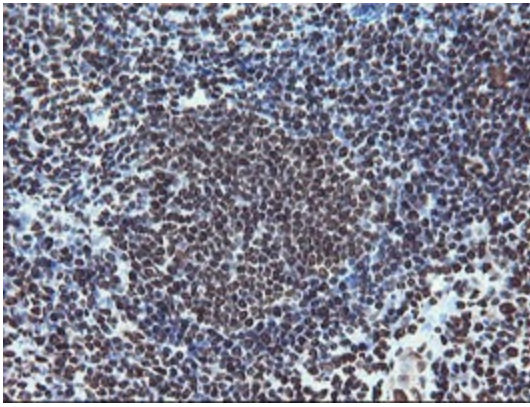
Immunohistochemical staining of paraffin-embedded Carcinoma of Human prostate tissue using anti-FMR1 mouse monoclonal antibody. (Heat-induced epitope retrieval by 10mM citric buffer, pH6.0, 100°C for 10min, [TA504373])



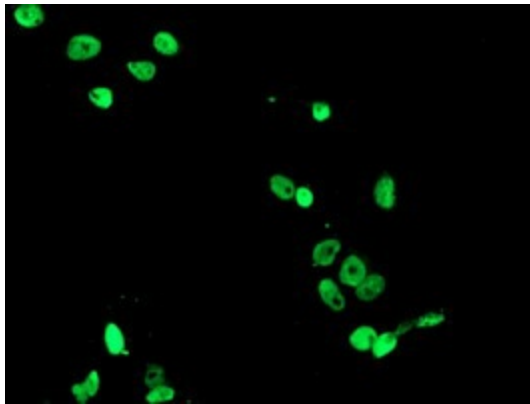
Immunohistochemical staining of paraffin-embedded Carcinoma of Human bladder tissue using anti-FMR1 mouse monoclonal antibody. (Heat-induced epitope retrieval by 10mM citric buffer, pH6.0, 100°C for 10min, [TA504373])



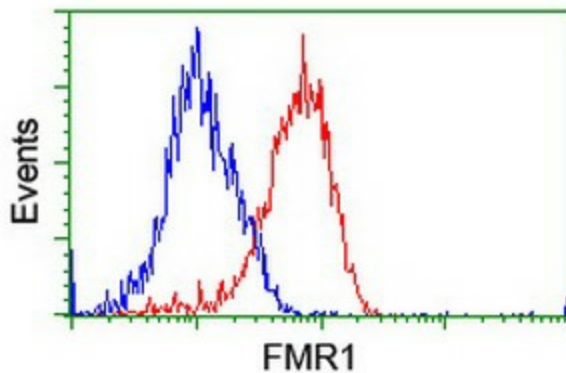
Immunohistochemical staining of paraffin-embedded Human Lymphoma tissue using anti-FMR1 mouse monoclonal antibody. (Heat-induced epitope retrieval by 10mM citric buffer, pH6.0, 100°C for 10min, [TA504373])



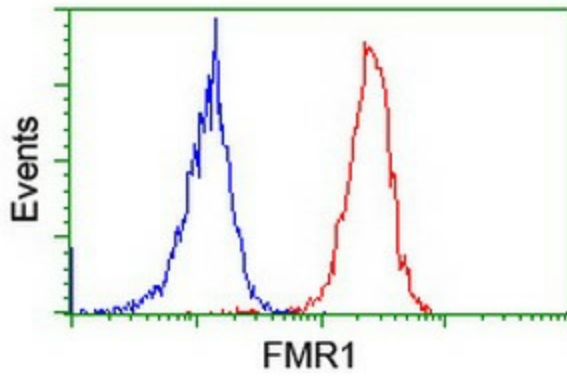
Immunohistochemical staining of paraffin-embedded Human tonsil within the normal limits using anti-FMR1 mouse monoclonal antibody. (Heat-induced epitope retrieval by 10mM citric buffer, pH6.0, 100°C for 10min, [TA504373])



Anti-FMR1 mouse monoclonal antibody ([TA504373]) immunofluorescent staining of COS7 cells transiently transfected by pCMV6-ENTRY FMR1 ([RC222699]).



Flow cytometric Analysis of HeLa cells, using anti-FMR1 antibody ([TA504373]), (Red), compared to a nonspecific negative control antibody, (Blue).



Flow cytometric Analysis of Jurkat cells, using anti-FMR1 antibody ([TA504373]), (Red), compared to a nonspecific negative control antibody, (Blue).