

Product datasheet for **TA504370**

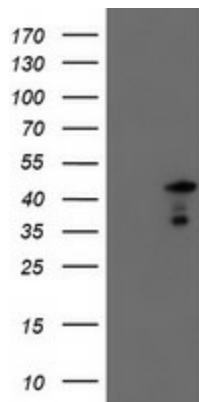
Protein C inhibitor (SERPINA5) Mouse Monoclonal Antibody [Clone ID: OTI2D10]

Product data:

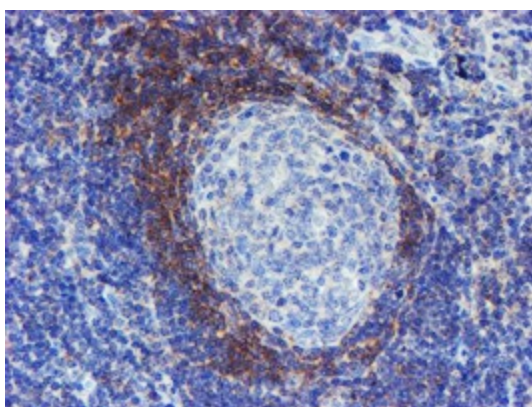
Product Type:	Primary Antibodies
Clone Name:	OTI2D10
Applications:	FC, IF, IHC, WB
Recommended Dilution:	WB 1:2000, IHC 1:150, IF 1:100, FLOW 1:100
Reactivity:	Human
Host:	Mouse
Isotype:	IgG1
Clonality:	Monoclonal
Immunogen:	Full length human recombinant protein of human SERPINA5(NP_000615) produced in HEK293T cell.
Formulation:	PBS (pH 7.3) containing 1% BSA, 50% glycerol and 0.02% sodium azide.
Concentration:	0.75 mg/ml
Purification:	Purified from mouse ascites fluids or tissue culture supernatant by affinity chromatography (protein A/G)
Conjugation:	Unconjugated
Storage:	Store at -20°C as received.
Stability:	Stable for 12 months from date of receipt.
Predicted Protein Size:	45.5 kDa
Gene Name:	serpin family A member 5
Database Link:	NP_000615 Entrez Gene 5104 Human P05154
Synonyms:	PAI-3; PAI3; PCI; PCI-B; PLANH3; PROCI
Protein Families:	Druggable Genome, Secreted Protein
Protein Pathways:	Complement and coagulation cascades



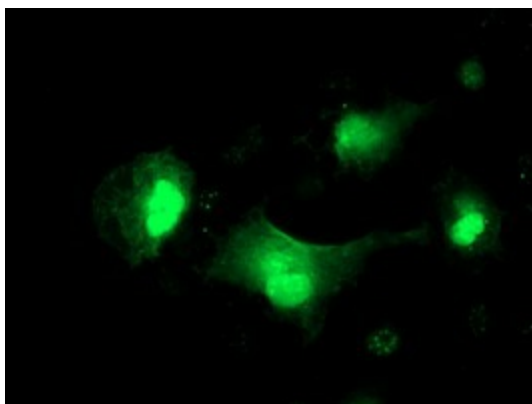
[View online »](#)

Product images:


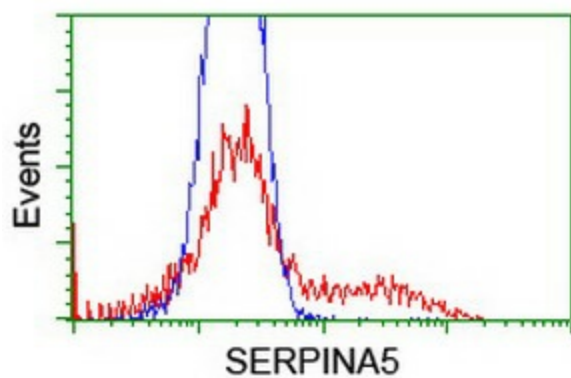
HEK293T cells were transfected with the pCMV6-ENTRY control (Cat# [PS100001], Left lane) or pCMV6-ENTRY SERPINA5 (Cat# [RC203599], Right lane) cDNA for 48 hrs and lysed. Equivalent amounts of cell lysates (5 ug per lane) were separated by SDS-PAGE and immunoblotted with anti-SERPINA5 (Cat# TA504370). Positive lysates [LY424603] (100ug) and [LC424603] (20ug) can be purchased separately from OriGene.



Immunohistochemical staining of paraffin-embedded Human tonsil within the normal limits using anti-SERPINA5 mouse monoclonal antibody. (Heat-induced epitope retrieval by 10mM citric buffer, pH6.0, 100°C for 10min, TA504370)



Anti-SERPINA5 mouse monoclonal antibody (TA504370) immunofluorescent staining of COS7 cells transiently transfected by pCMV6-ENTRY SERPINA5 ([RC203599]).



HEK293T cells transfected with either [RC203599] overexpress plasmid (Red) or empty vector control plasmid (Blue) were immunostained by anti-SERPINA5 antibody (TA504370), and then analyzed by flow cytometry.