

## Product datasheet for **TA504369M**

### Protein C inhibitor (SERPINA5) Mouse Monoclonal Antibody [Clone ID: OTI1C4]

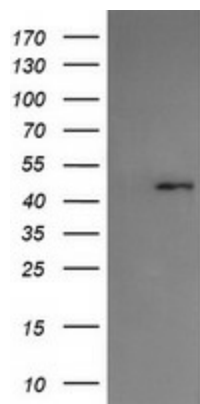
#### Product data:

|                         |   |
|-------------------------|---|
| Product Type:           | Primary Antibodies  |
| Clone Name:             | OTI1C4  |
| Applications:           | FC, WB  |
| Recommended Dilution:   | WB 1:1000, FLOW 1:100   |
| Reactivity:             | Human   |
| Host:                   | Mouse   |
| Isotype:                | IgG1  |
| Clonality:              | Monoclonal  |
| Immunogen:              | Full length human recombinant protein of human SERPINA5(NP_000615) produced in HEK293T cell.              |
| Formulation:            | PBS (pH 7.3) containing 1% BSA, 50% glycerol and 0.02% sodium azide.                                      |
| Concentration:          | 1 mg/ml   |
| Purification:           | Purified from mouse ascites fluids or tissue culture supernatant by affinity chromatography (protein A/G) |
| Conjugation:            | Unconjugated  |
| Storage:                | Store at -20°C as received.   |
| Stability:              | Stable for 12 months from date of receipt.  |
| Predicted Protein Size: | 45.5 kDa  |
| Gene Name:              | serpin family A member 5  |
| Database Link:          | <a href="#">NP_000615</a><br><a href="#">Entrez Gene 5104 Human</a><br><a href="#">P05154</a>             |
| Synonyms:               | PAI-3; PAI3; PCI; PCI-B; PLANH3; PROCI  |
| Protein Families:       | Druggable Genome, Secreted Protein  |
| Protein Pathways:       | Complement and coagulation cascades   |

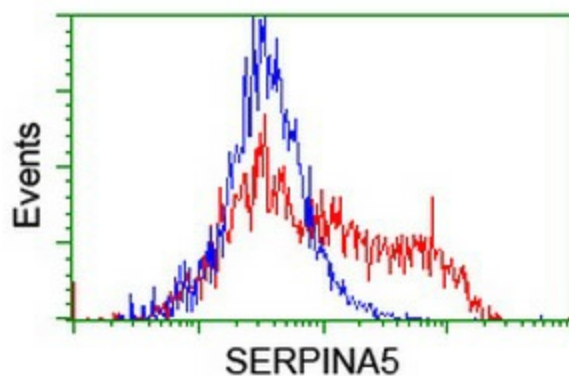


[View online »](#)

## Product images:



HEK293T cells were transfected with the pCMV6-ENTRY control (Left lane) or pCMV6-ENTRY SERPINA5 ([RC203599], Right lane) cDNA for 48 hrs and lysed. Equivalent amounts of cell lysates (5 ug per lane) were separated by SDS-PAGE and immunoblotted with anti-SERPINA5. Positive lysates [LY424603] (100ug) and [LC424603] (20ug) can be purchased separately from OriGene.



HEK293T cells transfected with either [RC203599] overexpress plasmid (Red) or empty vector control plasmid (Blue) were immunostained by anti-SERPINA5 antibody ([TA504369]), and then analyzed by flow cytometry.