

Product datasheet for **TA504368S**

Proteasome 20S beta 7 (PSMB7) Mouse Monoclonal Antibody [Clone ID: OTI1E1]

Product data:

Product Type:	Primary Antibodies
Clone Name:	OTI1E1
Applications:	IHC, WB
Recommended Dilution:	WB 1:500~2000, IHC 1:150
Reactivity:	Human, Monkey, Mouse, Rat
Host:	Mouse
Isotype:	IgG1
Clonality:	Monoclonal
Immunogen:	Human recombinant protein fragment corresponding to amino acids 58-277 of human PSMB7(NP_002790) produced in E.coli.
Formulation:	PBS (pH 7.3) containing 1% BSA, 50% glycerol and 0.02% sodium azide.
Concentration:	1 mg/ml
Purification:	Purified from mouse ascites fluids or tissue culture supernatant by affinity chromatography (protein A/G)
Conjugation:	Unconjugated
Storage:	Store at -20°C as received.
Stability:	Stable for 12 months from date of receipt.
Predicted Protein Size:	29.8 kDa
Gene Name:	proteasome 20S subunit beta 7
Database Link:	NP_002790 Entrez Gene 19177 Mouse Entrez Gene 85492 Rat Entrez Gene 694567 Monkey Entrez Gene 5695 Human Q99436



[View online »](#)

Background:

The proteasome is a multicatalytic proteinase complex with a highly ordered ring-shaped 20S core structure. The core structure is composed of 4 rings of 28 non-identical subunits; 2 rings are composed of 7 alpha subunits and 2 rings are composed of 7 beta subunits. Proteasomes are distributed throughout eukaryotic cells at a high concentration and cleave peptides in an ATP/ubiquitin-dependent process in a non-lysosomal pathway. An essential function of a modified proteasome, the immunoproteasome, is the processing of class I MHC peptides. This gene encodes a member of the proteasome B-type family, also known as the T1B family, that is a 20S core beta subunit in the proteasome. Expression of this catalytic subunit is downregulated by gamma interferon and proteolytic processing is required to generate a mature subunit. This subunit is not present in the immunoproteasome and is replaced by catalytic subunit 2i (proteasome beta 10 subunit). [provided by RefSeq]

Synonyms:

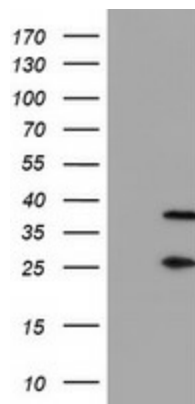
Z

Protein Families:

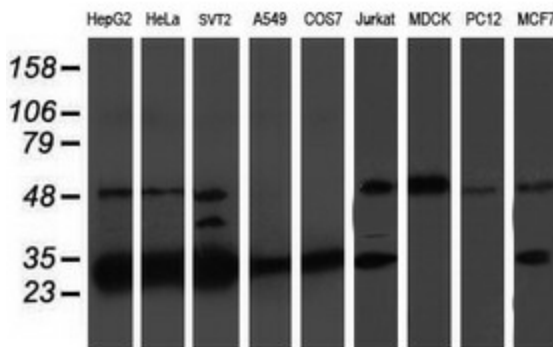
Druggable Genome, Protease

Protein Pathways:

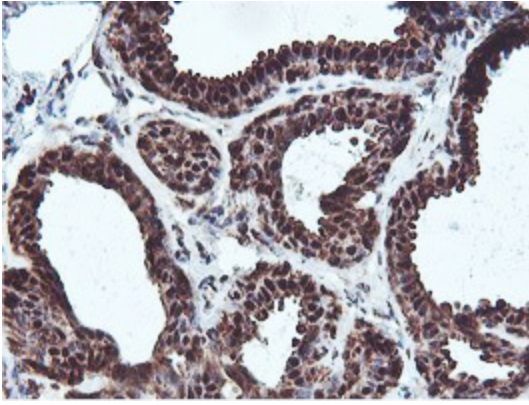
Proteasome

Product images:


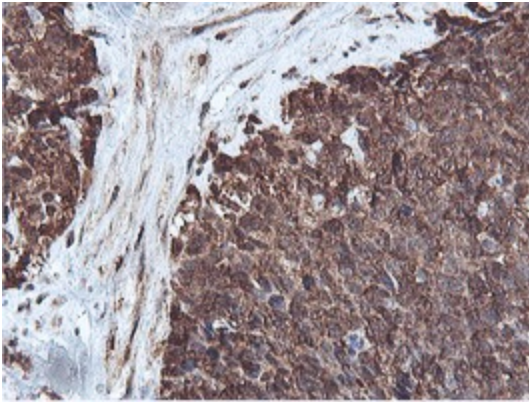
HEK293T cells were transfected with the pCMV6-ENTRY control (Cat# [PS100001], Left lane) or pCMV6-ENTRY PSMB7 (Cat# [RC201799], Right lane) cDNA for 48 hrs and lysed. Equivalent amounts of cell lysates (5 ug per lane) were separated by SDS-PAGE and immunoblotted with anti-PSMB7(Cat# [TA504368]). Positive lysates [LY400993] (100ug) and [LC400993] (20ug) can be purchased separately from OriGene.



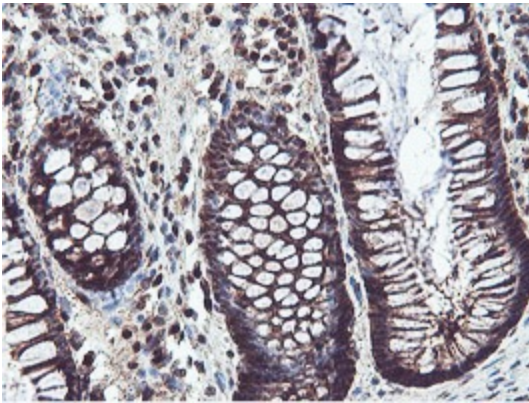
Western blot analysis of extracts (35ug) from 9 different cell lines by using anti-PSMB7 monoclonal antibody.



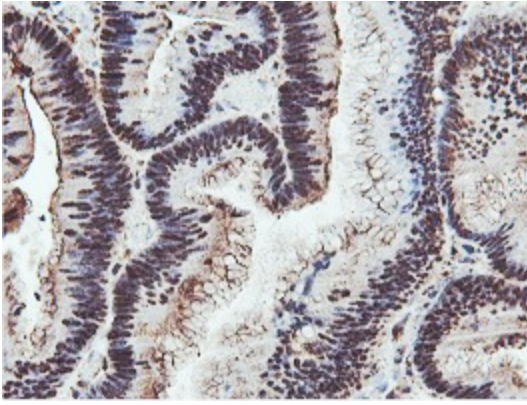
Immunohistochemical staining of paraffin-embedded Human breast tissue within the normal limits using anti-PSMB7 mouse monoclonal antibody. (Heat-induced epitope retrieval by 10mM citric buffer, pH6.0, 100°C for 10min, [TA504368])



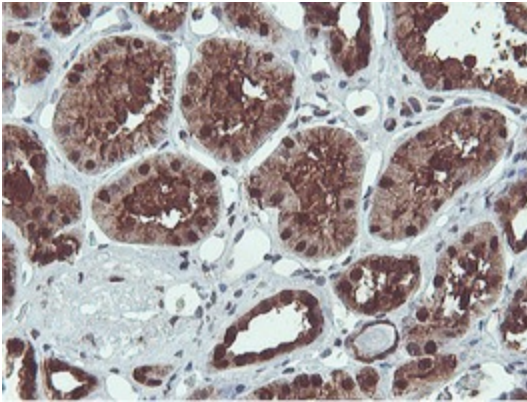
Immunohistochemical staining of paraffin-embedded Adenocarcinoma of Human breast tissue using anti-PSMB7 mouse monoclonal antibody. (Heat-induced epitope retrieval by 10mM citric buffer, pH6.0, 100°C for 10min, [TA504368])



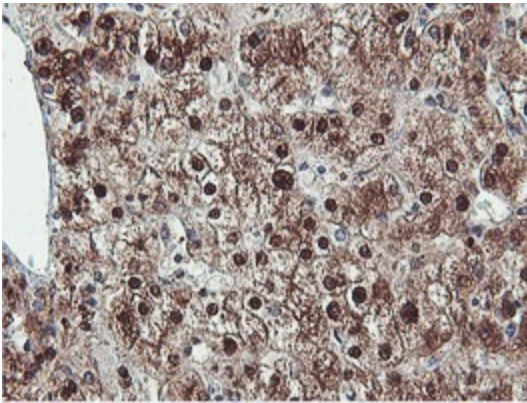
Immunohistochemical staining of paraffin-embedded Human colon tissue within the normal limits using anti-PSMB7 mouse monoclonal antibody. (Heat-induced epitope retrieval by 10mM citric buffer, pH6.0, 100°C for 10min, [TA504368])



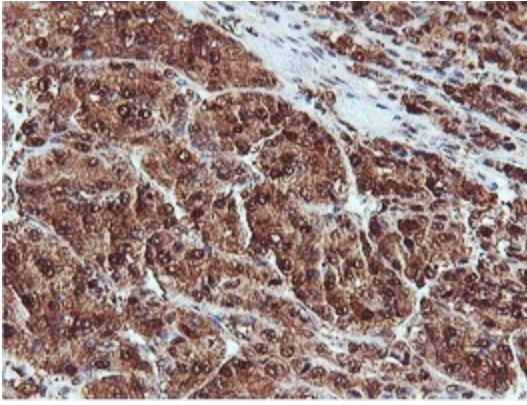
Immunohistochemical staining of paraffin-embedded Adenocarcinoma of Human colon tissue using anti-PSMB7 mouse monoclonal antibody. (Heat-induced epitope retrieval by 10mM citric buffer, pH6.0, 100°C for 10min, [TA504368])



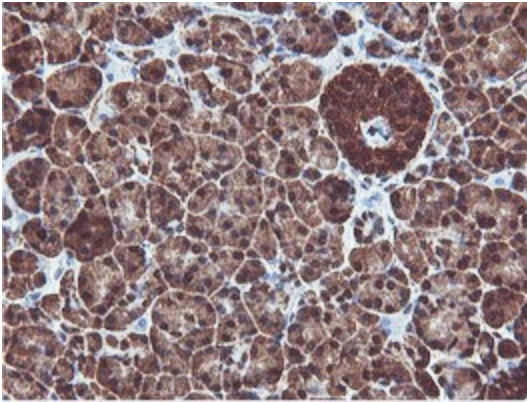
Immunohistochemical staining of paraffin-embedded Human Kidney tissue within the normal limits using anti-PSMB7 mouse monoclonal antibody. (Heat-induced epitope retrieval by 10mM citric buffer, pH6.0, 100°C for 10min, [TA504368])



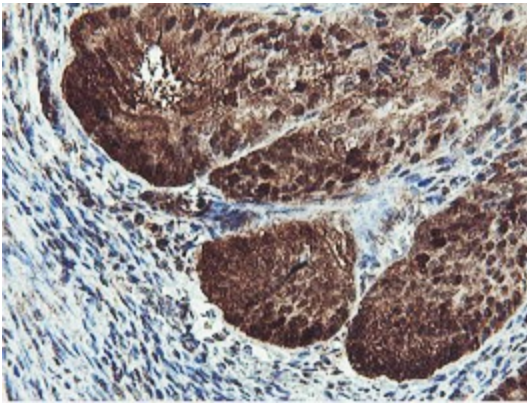
Immunohistochemical staining of paraffin-embedded Human liver tissue within the normal limits using anti-PSMB7 mouse monoclonal antibody. (Heat-induced epitope retrieval by 10mM citric buffer, pH6.0, 100°C for 10min, [TA504368])



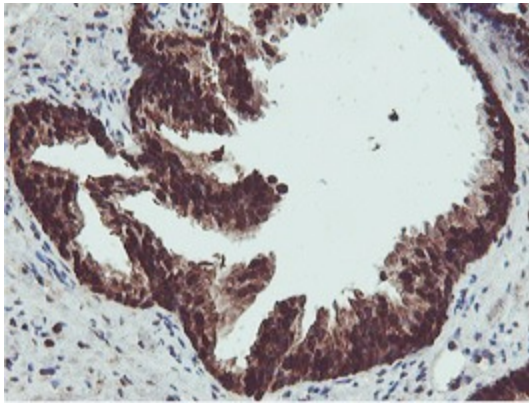
Immunohistochemical staining of paraffin-embedded Carcinoma of Human liver tissue using anti-PSMB7 mouse monoclonal antibody. (Heat-induced epitope retrieval by 10mM citric buffer, pH6.0, 100°C for 10min, [TA504368])



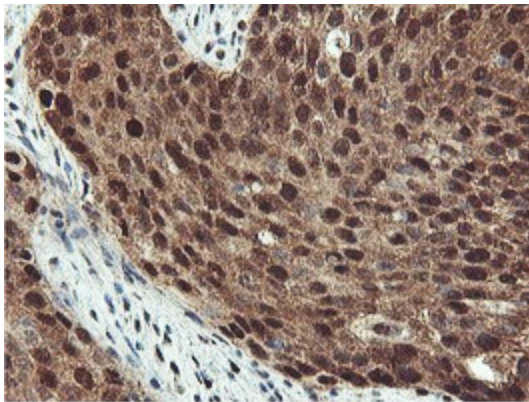
Immunohistochemical staining of paraffin-embedded Human pancreas tissue within the normal limits using anti-PSMB7 mouse monoclonal antibody. (Heat-induced epitope retrieval by 10mM citric buffer, pH6.0, 100°C for 10min, [TA504368])



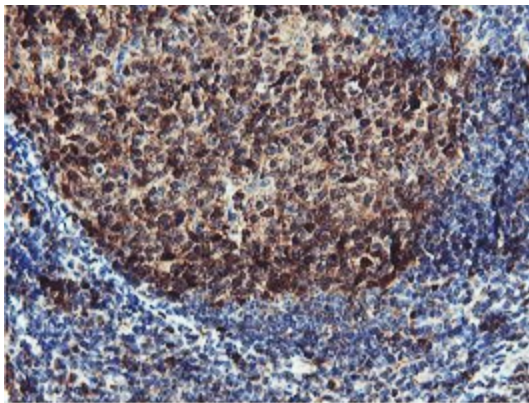
Immunohistochemical staining of paraffin-embedded Adenocarcinoma of Human endometrium tissue using anti-PSMB7 mouse monoclonal antibody. (Heat-induced epitope retrieval by 10mM citric buffer, pH6.0, 100°C for 10min, [TA504368])



Immunohistochemical staining of paraffin-embedded Human prostate tissue within the normal limits using anti-PSMB7 mouse monoclonal antibody. (Heat-induced epitope retrieval by 10mM citric buffer, pH6.0, 100°C for 10min, [TA504368])



Immunohistochemical staining of paraffin-embedded Carcinoma of Human bladder tissue using anti-PSMB7 mouse monoclonal antibody. (Heat-induced epitope retrieval by 10mM citric buffer, pH6.0, 100°C for 10min, [TA504368])



Immunohistochemical staining of paraffin-embedded Human tonsil within the normal limits using anti-PSMB7 mouse monoclonal antibody. (Heat-induced epitope retrieval by 10mM citric buffer, pH6.0, 100°C for 10min, [TA504368])