

Product datasheet for **TA504364BM**

SH2D2A Mouse Monoclonal Antibody (HRP conjugated) [Clone ID: OTI4F3]

Product data:

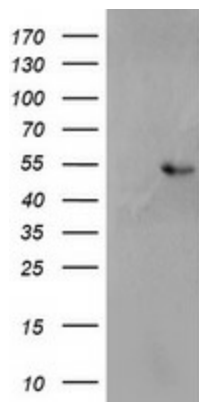
Product Type:	Primary Antibodies
Clone Name:	OTI4F3
Applications:	FC, IF, IHC, WB
Recommended Dilution:	WB 1:2000, IHC 1:150, IF 1:100, FLOW 1:100
Reactivity:	Human
Host:	Mouse
Isotype:	IgG1
Clonality:	Monoclonal
Immunogen:	Full length human recombinant protein of human SH2D2A(NP_003966) produced in HEK293T cell.
Formulation:	PBS (pH 7.3) containing 1% BSA, 50% glycerol.
Concentration:	0.5 mg/ml
Purification:	Purified from mouse ascites fluids or tissue culture supernatant by affinity chromatography (protein A/G)
Conjugation:	HRP
Storage:	Store at -20°C as received.
Stability:	Stable for 12 months from date of receipt.
Predicted Protein Size:	42.8 kDa
Gene Name:	SH2 domain containing 2A
Database Link:	NP_003966 Entrez Gene 9047 Human Q9NP31
Background:	This gene encodes an adaptor protein thought to function in T-cell signal transduction. A related protein in mouse is responsible for the activation of lymphocyte-specific protein-tyrosine kinase and functions in downstream signaling. Alternative splicing results in multiple transcript variants. [provided by RefSeq]
Synonyms:	F2771; SCAP; TSAD; VRAP



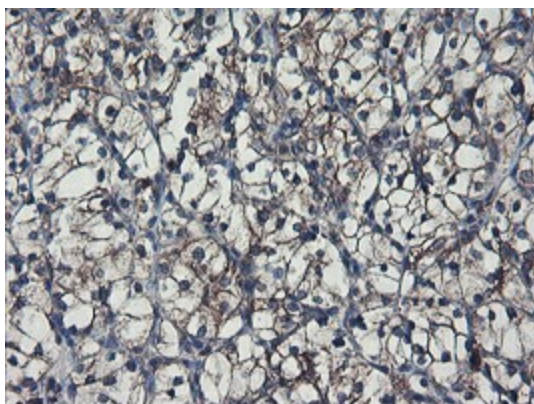
[View online »](#)

Protein Pathways: VEGF signaling pathway

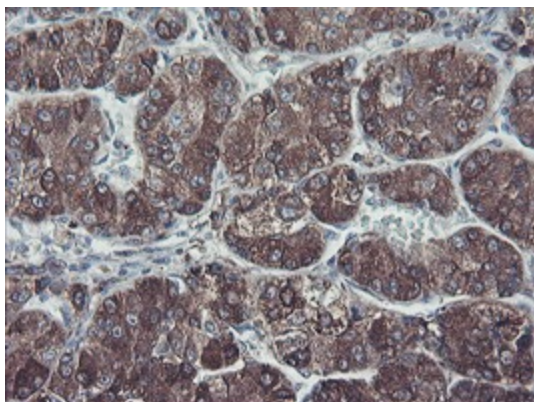
Product images:



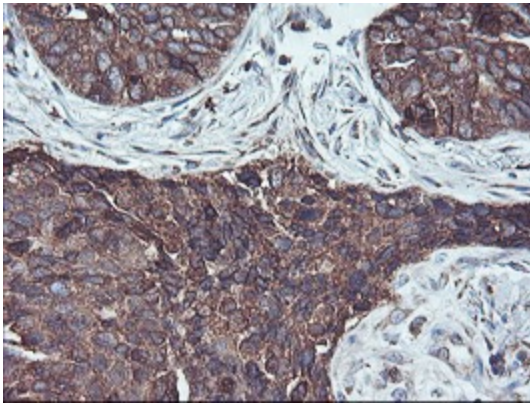
HEK293T cells were transfected with the pCMV6-ENTRY control (Cat# [PS100001], Left lane) or pCMV6-ENTRY SH2D2A (Cat# [RC204162], Right lane) cDNA for 48 hrs and lysed. Equivalent amounts of cell lysates (5 ug per lane) were separated by SDS-PAGE and immunoblotted with anti-SH2D2A (Cat# [TA504364]). Positive lysates [LY418322] (100ug) and [LC418322] (20ug) can be purchased separately from OriGene.



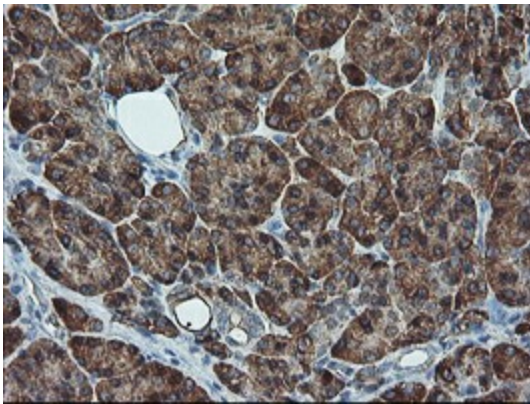
Immunohistochemical staining of paraffin-embedded Carcinoma of Human kidney tissue using anti-SH2D2A mouse monoclonal antibody. (Heat-induced epitope retrieval by 10mM citric buffer, pH6.0, 100°C for 10min, [TA504364])



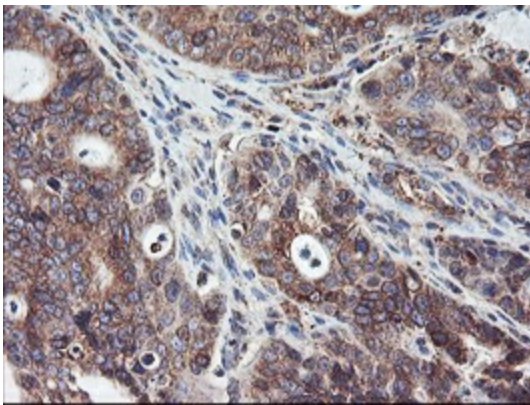
Immunohistochemical staining of paraffin-embedded Carcinoma of Human liver tissue using anti-SH2D2A mouse monoclonal antibody. (Heat-induced epitope retrieval by 10mM citric buffer, pH6.0, 100°C for 10min, [TA504364])



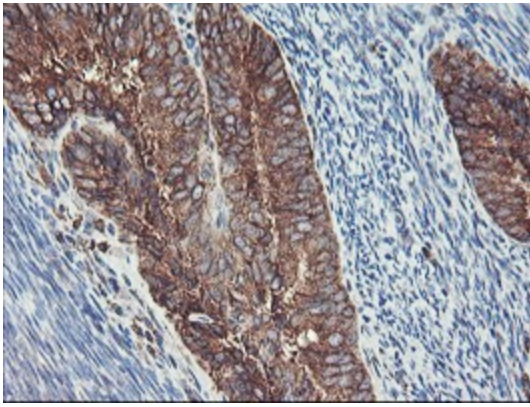
Immunohistochemical staining of paraffin-embedded Carcinoma of Human lung tissue using anti-SH2D2A mouse monoclonal antibody. (Heat-induced epitope retrieval by 10mM citric buffer, pH6.0, 100°C for 10min, [TA504364])



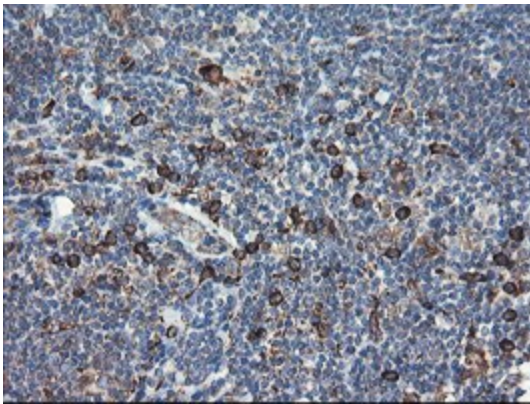
Immunohistochemical staining of paraffin-embedded Human pancreas tissue within the normal limits using anti-SH2D2A mouse monoclonal antibody. (Heat-induced epitope retrieval by 10mM citric buffer, pH6.0, 100°C for 10min, [TA504364])



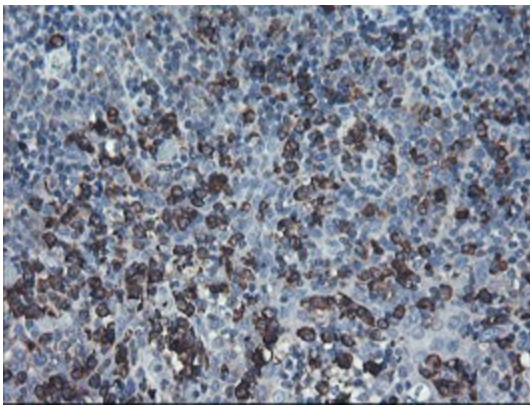
Immunohistochemical staining of paraffin-embedded Carcinoma of Human pancreas tissue using anti-SH2D2A mouse monoclonal antibody. (Heat-induced epitope retrieval by 10mM citric buffer, pH6.0, 100°C for 10min, [TA504364])



Immunohistochemical staining of paraffin-embedded Adenocarcinoma of Human endometrium tissue using anti-SH2D2A mouse monoclonal antibody. (Heat-induced epitope retrieval by 10mM citric buffer, pH6.0, 100°C for 10min, [TA504364])



Immunohistochemical staining of paraffin-embedded Human lymphoma tissue using anti-SH2D2A mouse monoclonal antibody. (Heat-induced epitope retrieval by 10mM citric buffer, pH6.0, 100°C for 10min, [TA504364])



Immunohistochemical staining of paraffin-embedded Human tonsil within the normal limits using anti-SH2D2A mouse monoclonal antibody. (Heat-induced epitope retrieval by 10mM citric buffer, pH6.0, 100°C for 10min, [TA504364])

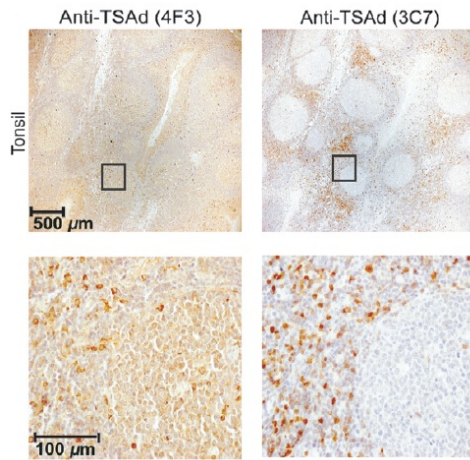
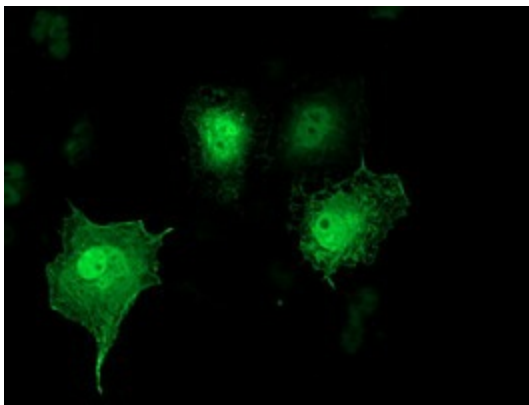
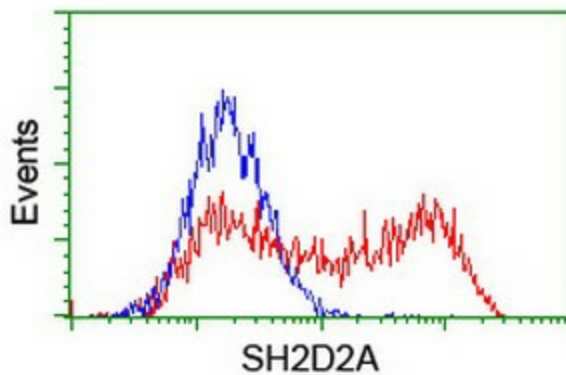


Figure from citation: Comparison of IHC on tonsil with clone 4F3 ([TA504364]) and clone 3C7 ([TA504372]) SH2D2A mAb and HRP-conjugated secondary antibodies. [View Citation](#)



Anti-SH2D2A mouse monoclonal antibody ([TA504364]) immunofluorescent staining of COS7 cells transiently transfected by pCMV6-ENTRY SH2D2A ([RC204162]).



HEK293T cells transfected with either [RC204162] overexpress plasmid (Red) or empty vector control plasmid (Blue) were immunostained by anti-SH2D2A antibody ([TA504364]), and then analyzed by flow cytometry.