

## Product datasheet for **TA504358S**

### **ALOX15 Mouse Monoclonal Antibody [Clone ID: OTI7H6]**

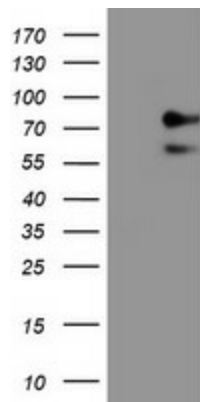
#### **Product data:**

<b>Product Type:</b>	Primary Antibodies
<b>Clone Name:</b>	OTI7H6
<b>Applications:</b>	FC, IF, IHC, WB
<b>Recommended Dilution:</b>	WB 1:2000, IHC 1:150, IF 1:100, FLOW 1:100
<b>Reactivity:</b>	Human
<b>Host:</b>	Mouse
<b>Isotype:</b>	IgG2b
<b>Clonality:</b>	Monoclonal
<b>Immunogen:</b>	Full length human recombinant protein of human ALOX15(NP_001131) produced in HEK293T cell.
<b>Formulation:</b>	PBS (pH 7.3) containing 1% BSA, 50% glycerol and 0.02% sodium azide.
<b>Concentration:</b>	1 mg/ml
<b>Purification:</b>	Purified from mouse ascites fluids or tissue culture supernatant by affinity chromatography (protein A/G)
<b>Conjugation:</b>	Unconjugated
<b>Storage:</b>	Store at -20°C as received.
<b>Stability:</b>	Stable for 12 months from date of receipt.
<b>Predicted Protein Size:</b>	74.6 kDa
<b>Gene Name:</b>	arachidonate 15-lipoxygenase
<b>Database Link:</b>	<a href="#">NP_001131</a> <a href="#">Entrez Gene 246 Human</a> <a href="#">P16050</a>
<b>Synonyms:</b>	12-LOX; 15-LOX-1; 15LOX-1
<b>Protein Families:</b>	Druggable Genome
<b>Protein Pathways:</b>	Arachidonic acid metabolism, Linoleic acid metabolism, Metabolic pathways

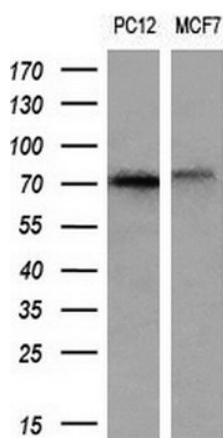


[View online »](#)

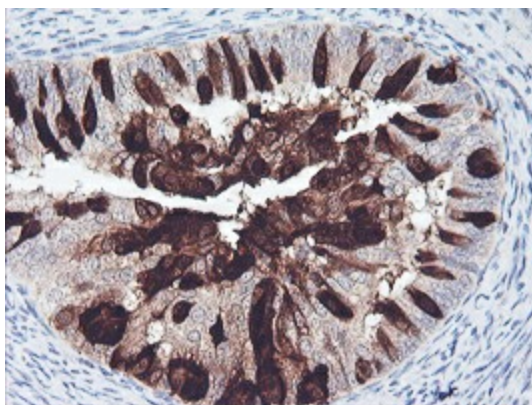
## Product images:



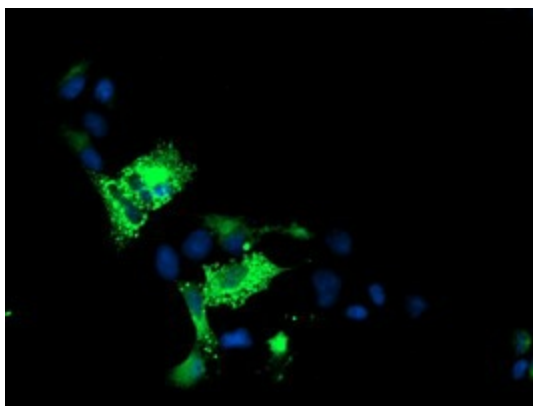
HEK293T cells were transfected with the pCMV6-ENTRY control (Cat# [PS100001], Left lane) or pCMV6-ENTRY ALOX15 (Cat# [RC206621], Right lane) cDNA for 48 hrs and lysed. Equivalent amounts of cell lysates (5 ug per lane) were separated by SDS-PAGE and immunoblotted with anti-ALOX15 (Cat# [TA504358]). Positive lysates [LY400456] (100ug) and [LC400456] (20ug) can be purchased separately from OriGene.



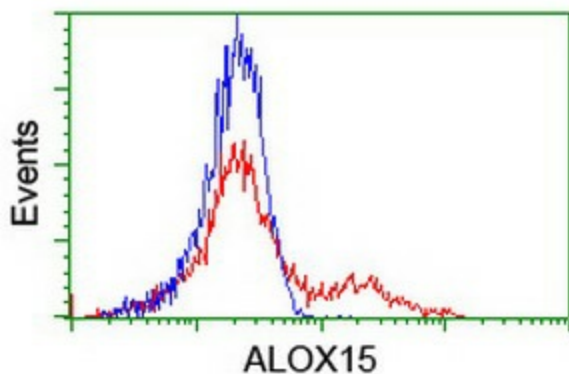
Western blot analysis of extracts (10ug) from 2 different cell lines by using anti-ALOX15 monoclonal antibody (1:200).



Immunohistochemical staining of paraffin-embedded Adenocarcinoma of Human endometrium tissue using anti-ALOX15 mouse monoclonal antibody. (Heat-induced epitope retrieval by 10mM citric buffer, pH6.0, 100°C for 10min, [TA504358])



Anti-ALOX15 mouse monoclonal antibody ([TA504358]) immunofluorescent staining of COS7 cells transiently transfected by pCMV6-ENTRY ALOX15 ([RC206621]).



HEK293T cells transfected with either [RC206621] overexpress plasmid (Red) or empty vector control plasmid (Blue) were immunostained by anti-ALOX15 antibody ([TA504358]), and then analyzed by flow cytometry.