

Product datasheet for **TA504355S**

SERPINB6 Mouse Monoclonal Antibody [Clone ID: OT13H3]

Product data:

Product Type:	Primary Antibodies
Clone Name:	OT13H3
Applications:	FC, IF, WB
Recommended Dilution:	WB 1:500~2000, IF 1:100, FLOW 1:100
Reactivity:	Human, Monkey, Mouse
Host:	Mouse
Isotype:	IgG2a
Clonality:	Monoclonal
Immunogen:	Full length human recombinant protein of human SERPINB6(NP_004559) produced in HEK293T cell.
Formulation:	PBS (pH 7.3) containing 1% BSA, 50% glycerol and 0.02% sodium azide.
Concentration:	1.08 mg/ml
Purification:	Purified from mouse ascites fluids or tissue culture supernatant by affinity chromatography (protein A/G)
Conjugation:	Unconjugated
Storage:	Store at -20°C as received.
Stability:	Stable for 12 months from date of receipt.
Predicted Protein Size:	42.4 kDa
Gene Name:	serpin family B member 6
Database Link:	NP_004559 Entrez Gene 716411 Monkey Entrez Gene 5269 Human P35237

[View online »](#)

Background:

The protein encoded by this gene is a member of the serpin (serine proteinase inhibitor) superfamily, and ovalbumin(ov)-serpin subfamily. It was originally discovered as a placental thrombin inhibitor. The mouse homolog was found to be expressed in the hair cells of the inner ear. Mutations in this gene are associated with nonsyndromic progressive hearing loss, suggesting that this serpin plays an important role in the inner ear in the protection against leakage of lysosomal content during stress, and that loss of this protection results in cell death and sensorineural hearing loss. Alternatively spliced transcript variants have been found for this gene. [provided by RefSeq]

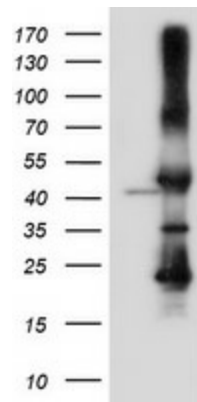
Synonyms:

CAP; DFNB91; MSTP057; PI-6; PI6; PTI; SPI3

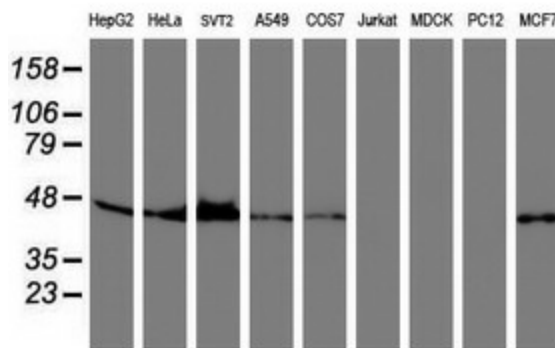
Protein Families:

Druggable Genome

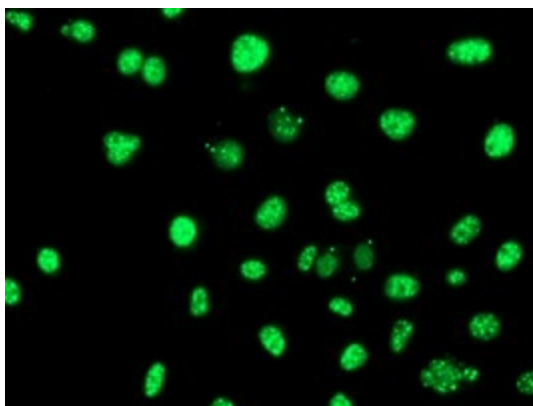
Product images:



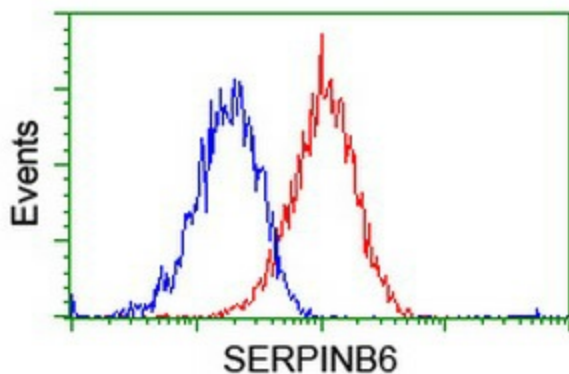
HEK293T cells were transfected with the pCMV6-ENTRY control (Left lane) or pCMV6-ENTRY SERPINB6 ([RC200668], Right lane) cDNA for 48 hrs and lysed. Equivalent amounts of cell lysates (5 ug per lane) were separated by SDS-PAGE and immunoblotted with anti-SERPINB6. Positive lysates [LY417897] (100ug) and [LC417897] (20ug) can be purchased separately from OriGene.



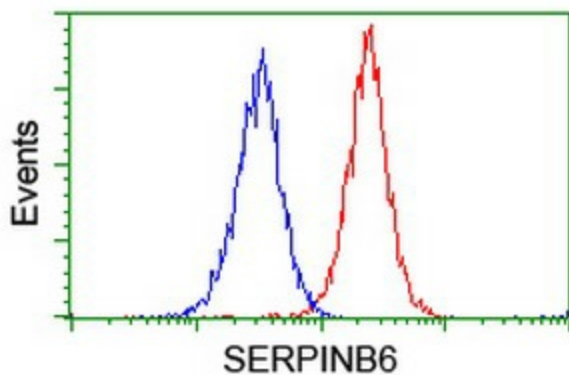
Western blot analysis of extracts (35ug) from 9 different cell lines by using anti-SERPINB6 monoclonal antibody.



Anti-SERPINB6 mouse monoclonal antibody ([TA504355]) immunofluorescent staining of COS7 cells transiently transfected by pCMV6-ENTRY SERPINB6 ([RC200668]).



Flow cytometric Analysis of Hela cells, using anti-SERPINB6 antibody ([TA504355]), (Red), compared to a nonspecific negative control antibody, (Blue).



Flow cytometric Analysis of Jurkat cells, using anti-SERPINB6 antibody ([TA504355]), (Red), compared to a nonspecific negative control antibody, (Blue).