

## Product datasheet for **TA504351AM**

### Calpastatin (CAST) Mouse Monoclonal Antibody (Biotin conjugated) [Clone ID: OTI1E7]

#### Product data:

Product Type:	Primary Antibodies
Clone Name:	OTI1E7
Applications:	FC, IHC, WB
Recommended Dilution:	WB 1:2000, IHC 1:150, FLOW 1:100
Reactivity:	Human
Host:	Mouse
Isotype:	IgG1
Clonality:	Monoclonal
Immunogen:	Full length human recombinant protein of human CAST(NP_001741) produced in HEK293T cell.
Formulation:	PBS (pH 7.3) containing 1% BSA, 50% glycerol and 0.02% sodium azide.
Concentration:	0.5 mg/ml
Purification:	Purified from mouse ascites fluids or tissue culture supernatant by affinity chromatography (protein A/G)
Conjugation:	Biotin
Storage:	Store at -20°C as received.
Stability:	Stable for 12 months from date of receipt.
Predicted Protein Size:	84.8 kDa
Gene Name:	calpastatin
Database Link:	<a href="#">NP_001741</a> <a href="#">Entrez Gene 831 Human</a> <a href="#">P20810</a>



[View online »](#)

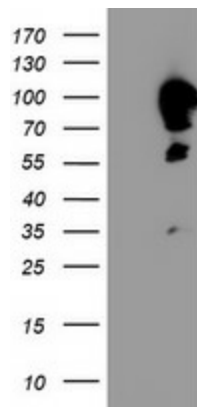
**Background:**

The protein encoded by this gene is an endogenous calpain (calcium-dependent cysteine protease) inhibitor. It consists of an N-terminal domain L and four repetitive calpain-inhibition domains (domains 1-4), and it is involved in the proteolysis of amyloid precursor protein. The calpain/calpastatin system is involved in numerous membrane fusion events, such as neural vesicle exocytosis and platelet and red-cell aggregation. The encoded protein is also thought to affect the expression levels of genes encoding structural or regulatory proteins. Alternatively spliced transcript variants encoding different isoforms have been described. [provided by RefSeq]

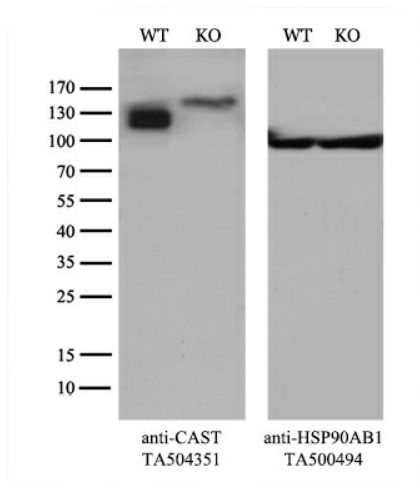
**Synonyms:**

BS-17; PLACK

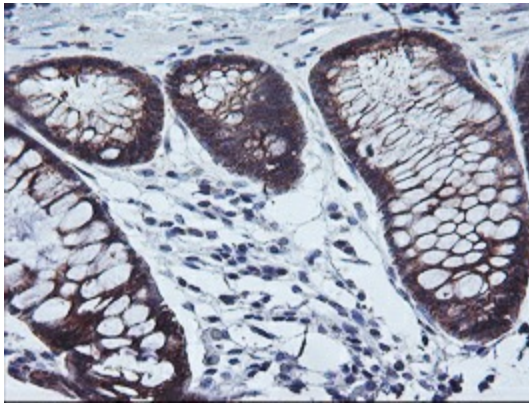
**Product images:**



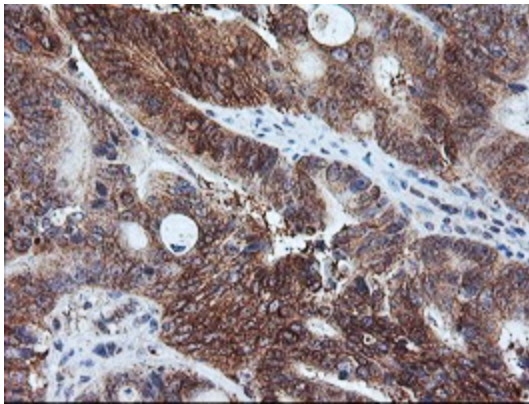
HEK293T cells were transfected with the pCMV6-ENTRY control (Cat# [PS100001], Left lane) or pCMV6-ENTRY CAST (Cat# [RC211776], Right lane) cDNA for 48 hrs and lysed. Equivalent amounts of cell lysates (5 ug per lane) were separated by SDS-PAGE and immunoblotted with anti-CAST (Cat# [TA504351]). Positive lysates [LY400663] (100ug) and [LC400663] (20ug) can be purchased separately from OriGene.



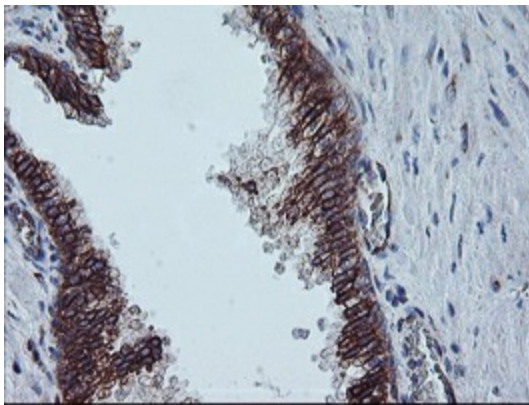
Equivalent amounts of cell lysates (10 ug per lane) of wild-type HeLa cells (WT, Cat# LC810HELA) and CAST-Knockout HeLa cells (KO, Cat# [LC810027]) were separated by SDS-PAGE and immunoblotted with anti-CAST monoclonal antibody [TA504351], (1:500). Then the blotted membrane was stripped and reprobed with anti-HSP90AB1 antibody ([TA500494]) as a loading control.



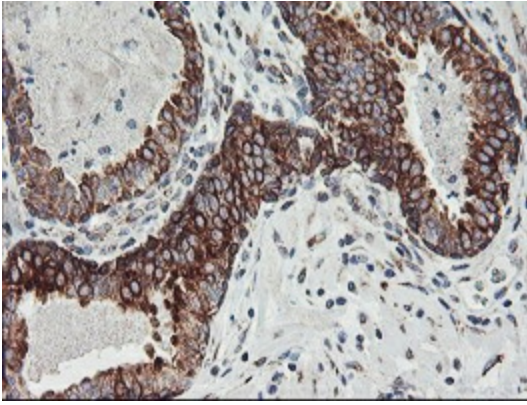
Immunohistochemical staining of paraffin-embedded Human colon tissue within the normal limits using anti-CAST mouse monoclonal antibody. (Heat-induced epitope retrieval by 10mM citric buffer, pH6.0, 100°C for 10min, [TA504351])



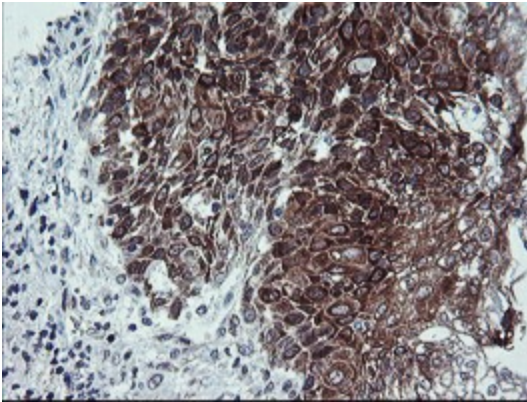
Immunohistochemical staining of paraffin-embedded Carcinoma of Human pancreas tissue using anti-CAST mouse monoclonal antibody. (Heat-induced epitope retrieval by 10mM citric buffer, pH6.0, 100°C for 10min, [TA504351])



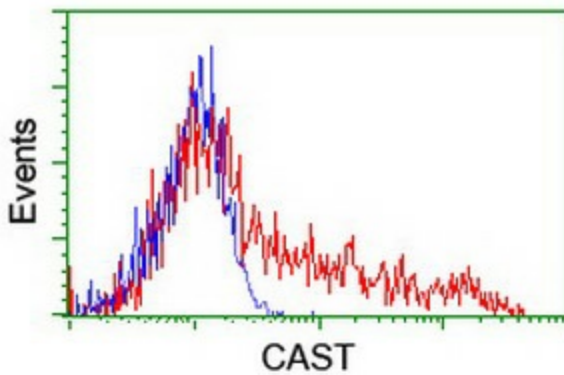
Immunohistochemical staining of paraffin-embedded Human prostate tissue within the normal limits using anti-CAST mouse monoclonal antibody. (Heat-induced epitope retrieval by 10mM citric buffer, pH6.0, 100°C for 10min, [TA504351])



Immunohistochemical staining of paraffin-embedded Carcinoma of Human prostate tissue using anti-CAST mouse monoclonal antibody. (Heat-induced epitope retrieval by 10mM citric buffer, pH6.0, 100°C for 10min, [TA504351])



Immunohistochemical staining of paraffin-embedded Carcinoma of Human bladder tissue using anti-CAST mouse monoclonal antibody. (Heat-induced epitope retrieval by 10mM citric buffer, pH6.0, 100°C for 10min, [TA504351])



HEK293T cells transfected with either [RC211776] overexpress plasmid (Red) or empty vector control plasmid (Blue) were immunostained by anti-CAST antibody ([TA504351]), and then analyzed by flow cytometry.