

Product datasheet for **TA504345BM**

Calpain 2 (CAPN2) Mouse Monoclonal Antibody (HRP conjugated) [Clone ID: OTI1F4]

Product data:

| | |
|-------------------------|--|
| Product Type: | Primary Antibodies |
| Clone Name: | OTI1F4 |
| Applications: | FC, WB |
| Recommended Dilution: | WB 1:500~2000, FLOW 1:100 |
| Reactivity: | Human, Rat, Monkey, Mouse |
| Host: | Mouse |
| Isotype: | IgG2a |
| Clonality: | Monoclonal |
| Immunogen: | Full length human recombinant protein of human CAPN2(NP_001739) produced in HEK293T cell. |
| Formulation: | PBS (pH 7.3) containing 1% BSA, 50% glycerol. |
| Concentration: | 0.5 mg/ml |
| Purification: | Purified from mouse ascites fluids or tissue culture supernatant by affinity chromatography (protein A/G) |
| Conjugation: | HRP |
| Storage: | Store at -20°C as received. |
| Stability: | Stable for 12 months from date of receipt. |
| Predicted Protein Size: | 79.8 kDa |
| Gene Name: | calpain 2 |
| Database Link: | NP_001739 Entrez Gene 12334 Mouse Entrez Gene 29154 Rat Entrez Gene 703047 Monkey Entrez Gene 824 Human P17655 |



[View online »](#)

Background:

The calpains, calcium-activated neutral proteases, are nonlysosomal, intracellular cysteine proteases. The mammalian calpains include ubiquitous, stomach-specific, and muscle-specific proteins. The ubiquitous enzymes consist of heterodimers with distinct large, catalytic subunits associated with a common small, regulatory subunit. This gene encodes the large subunit of the ubiquitous enzyme, calpain 2. Multiple heterogeneous transcriptional start sites in the 5' UTR have been reported. Two transcript variants encoding different isoforms have been found for this gene. [provided by RefSeq, Mar 2009]

Synonyms:

CANP2; CANPL2; CANPml; mCANP

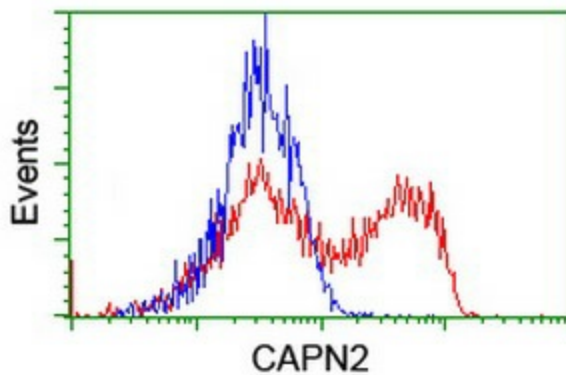
Protein Families:

Druggable Genome, Protease

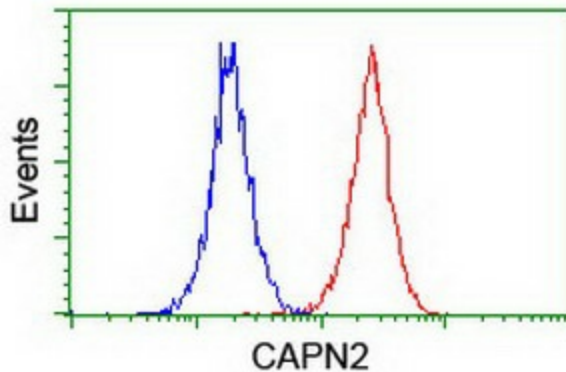
Protein Pathways:

Alzheimer's disease, Apoptosis, Focal adhesion

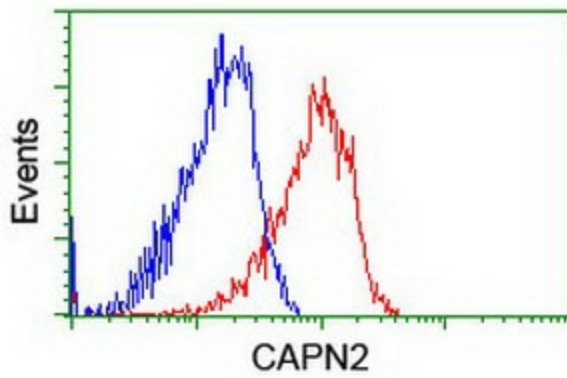
Product images:



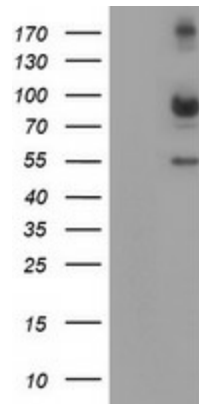
HEK293T cells transfected with either [RC205642] overexpress plasmid (Red) or empty vector control plasmid (Blue) were immunostained by anti-CAPN2 antibody ([TA504345]), and then analyzed by flow cytometry.



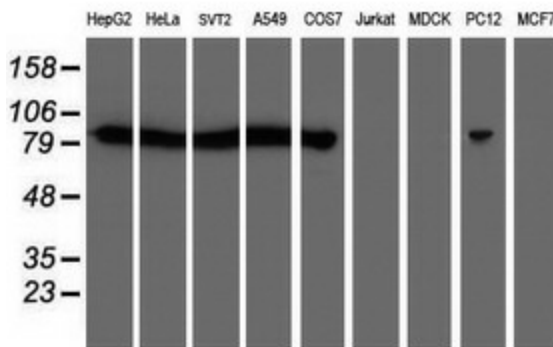
Flow cytometric Analysis of Jurkat cells, using anti-CAPN2 antibody ([TA504345]), (Red), compared to a nonspecific negative control antibody, (Blue).



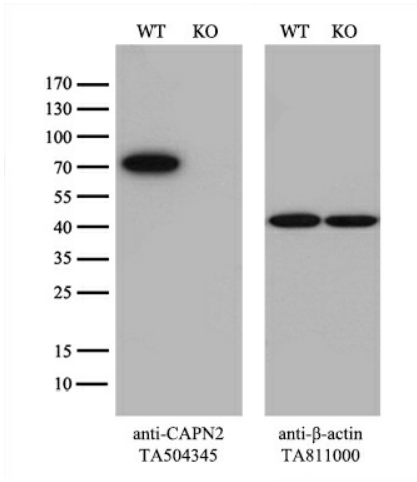
Flow cytometric Analysis of HeLa cells, using anti-CAPN2 antibody ([TA504345]), (Red), compared to a nonspecific negative control antibody, (Blue).



HEK293T cells were transfected with the pCMV6-ENTRY control (Left lane) or pCMV6-ENTRY CAPN2 ([RC205642], Right lane) cDNA for 48 hrs and lysed. Equivalent amounts of cell lysates (5 ug per lane) were separated by SDS-PAGE and immunoblotted with anti-CAPN2 ([TA504345]). Positive lysates [LY400662] (100ug) and [LC400662] (20ug) can be purchased separately from OriGene.



Western blot analysis of extracts (35ug) from 9 different cell lines by using anti-CAPN2 monoclonal antibody (HepG2: human; HeLa: human; SVT2: mouse; A549: human; COS7: monkey; Jurkat: human; MDCK: canine; PC12: rat; MCF7: human).



Equivalent amounts of cell lysates (10 ug per lane) of wild-type 293T cells (WT, Cat# LC810293T) and CAPN2-Knockout 293T cells (KO, Cat# [LC841490]) were separated by SDS-PAGE and immunoblotted with anti-CAPN2 monoclonal antibody [TA504345], (1:500). Then the blotted membrane was stripped and reprobed with anti-β-actin antibody ([TA811000]) as a loading control.